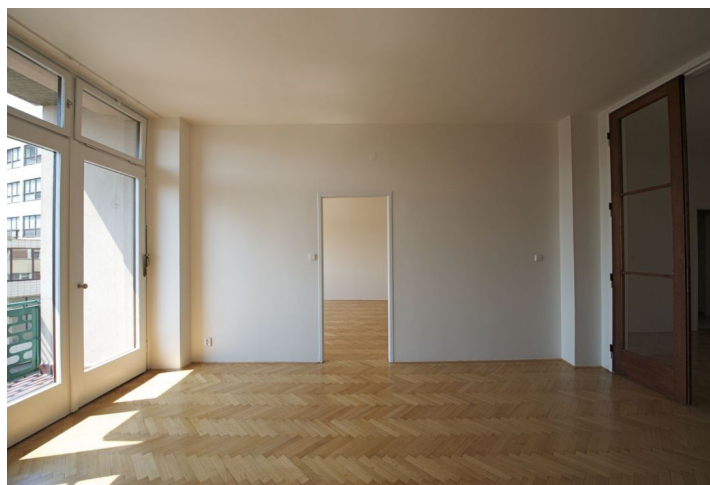




Apartment Three-bedroom (4+1)

€ 911 | CZK 22 500

123 m², Prague 7, Letná, Antonínská





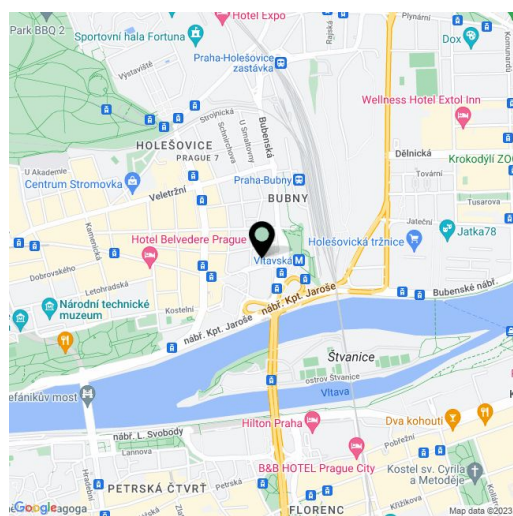
Apartment Three-bedroom (4+1)

€ 911 | CZK 22 500

123 m², Prague 7, Letná, Antonínská

Total area	123 m²
Parking	Parking in the courtyard could be provided.
Cellar	-
PENB	G
Reference number	6103
Available from	Immediately

Atypical newly reconstructed 3-bedroom 2-bathroom apartment with 2 balconies situated on the 2nd floor in a Functionalist building that has retained its original character. Conveniently located in a lively Prague 7 neighborhood just steps from Vltavská metro station and lots of tram links, Vltava riverbank, and a few minute walk to the Stromovka and Letná parks. The city center is also accessible by foot. The bright apartment features 3 large walk through rooms interconnected by walls of floor-to-ceiling windows - one of them with a balcony and a small winter garden - which can be used e.g. as living room, dining room and bedroom. There is one separate bedroom, small bedroom/study with a built-in shower, fitted kitchen with pantry and courtyard oriented balcony, bathroom with bath tub, bidet, toilet and sink, extra toilet, and entry hall with storage space. Preserved original features, central heating, audio entry phone. South and north oriented. Washer, dishwasher and fridge can be provided according to the tenant's wishes. UPC possible. Monthly deposit for services CZK 5000. Electricity is billed separately.



* Area of the unit according to the Civil Code. The area consists of the sum total area of the entire unit bounded by perimeter walls.