



House Four-bedroom (5+kk)

Rented

350 m², Praha-západ, Horoměřice, Slunná



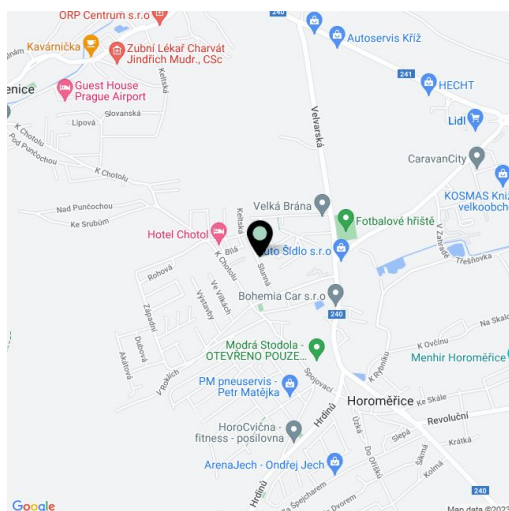


House Four-bedroom (5+kk)

Rented350 m², Praha-západ, Horoměřice, Slunná

Parking	Garage with automatic gate.
Cellar	-
PENB	G
Reference number	6150
Available from	Immediately

Newly built 4-bedroom 2-bathroom family house located in a quiet green Prague 6 neighborhood convenient to the international schools in Prague 6, just a short drive to the ISP or the Riverside School. The ground floor consists of living room with a slow burning stove, fully fitted and equipped open plan kitchen and terrace access, guest bedroom, separate toilet with sink, and garage access. The first floor includes 3 bedrooms and 2 bathrooms. The master bedroom is a separate unit including entrance area/clothes closet, bedroom, en-suite bathroom, and storage room. The basement has two large rooms and storage space. Security entry door, French windows, blinds, dishwasher, microwave, alarm connected to the police station, Internet, satellite connection, video entry phone. Gas, electricity and water are billed according to individual consumption.

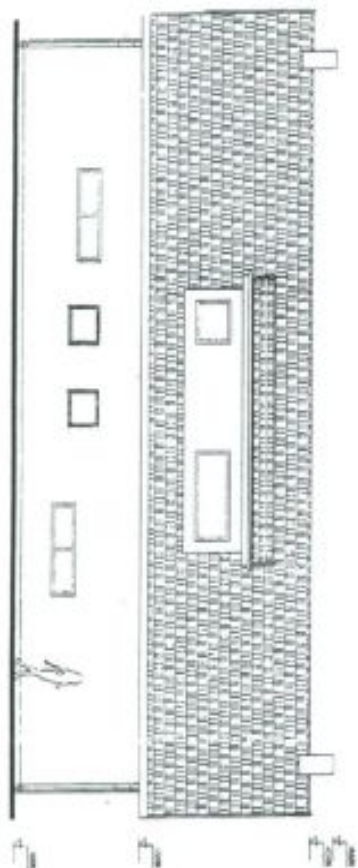




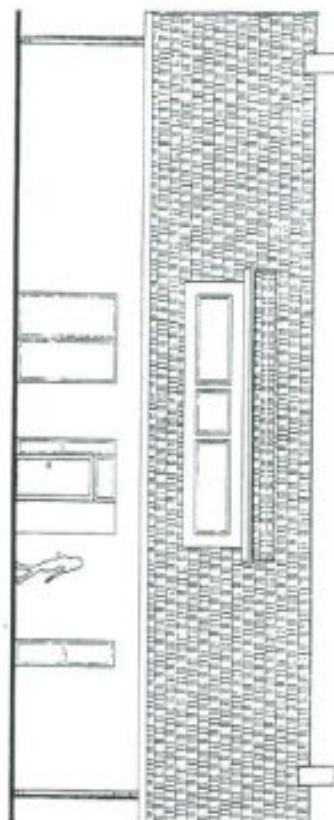
House Four-bedroom (5+kk)

350 m², Praha-západ, Horoměřice, Slunná

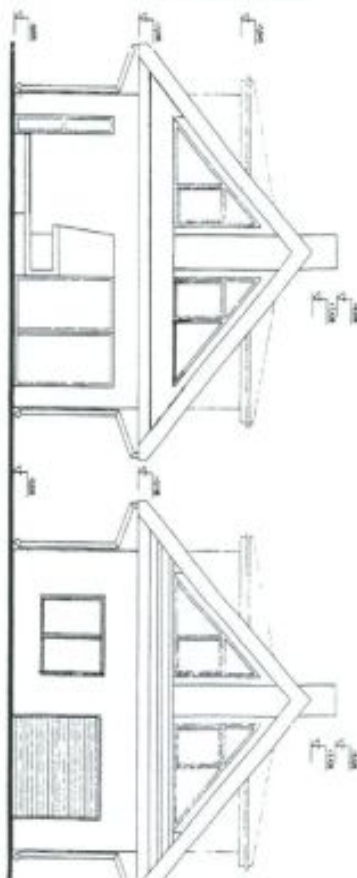
Rented



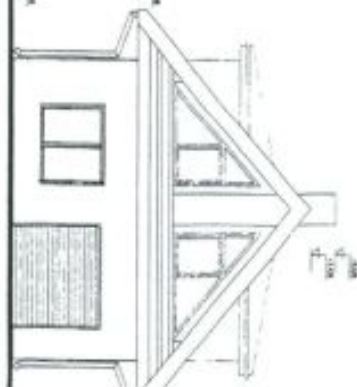
Pohled Severní



Pohled Jižní



Pohled Západní



Pohled východní

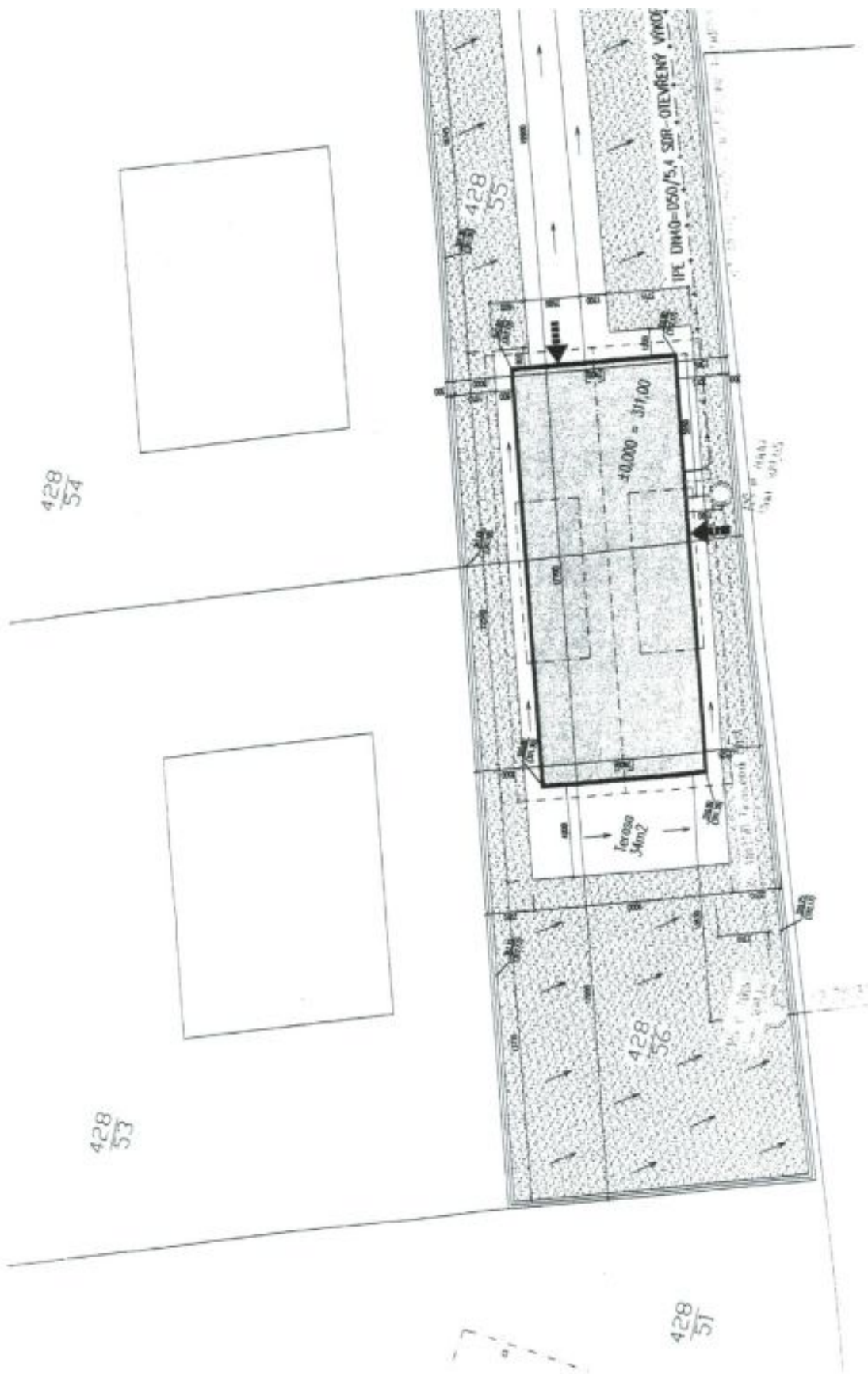
POHLEDY 1 : 100



House Four-bedroom (5+kk)

350 m², Praha-západ, Horoměřice, Slunná

Rented

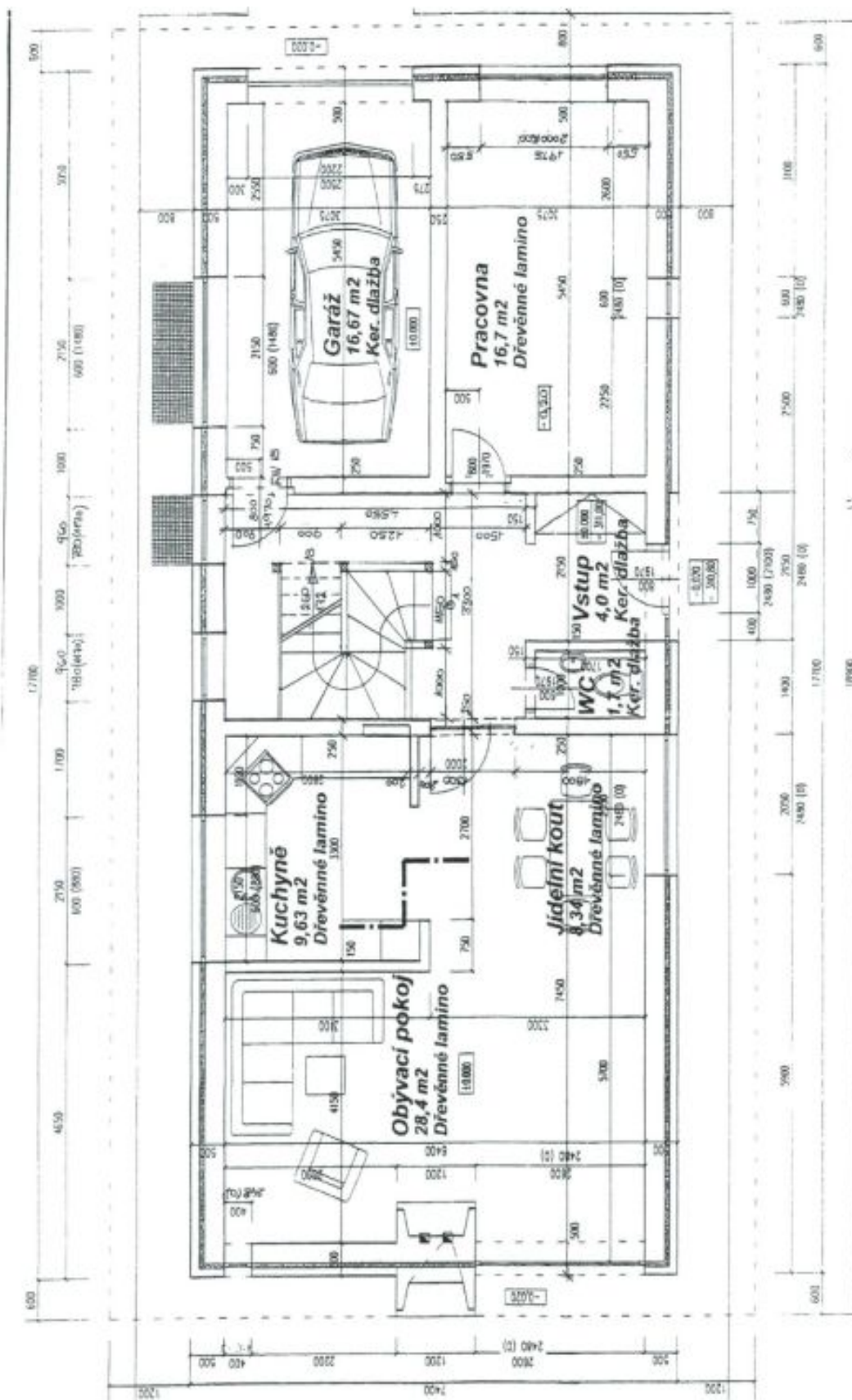




House Four-bedroom (5+kk)

Rented

350 m², Praha-západ, Horoměřice, Slunná

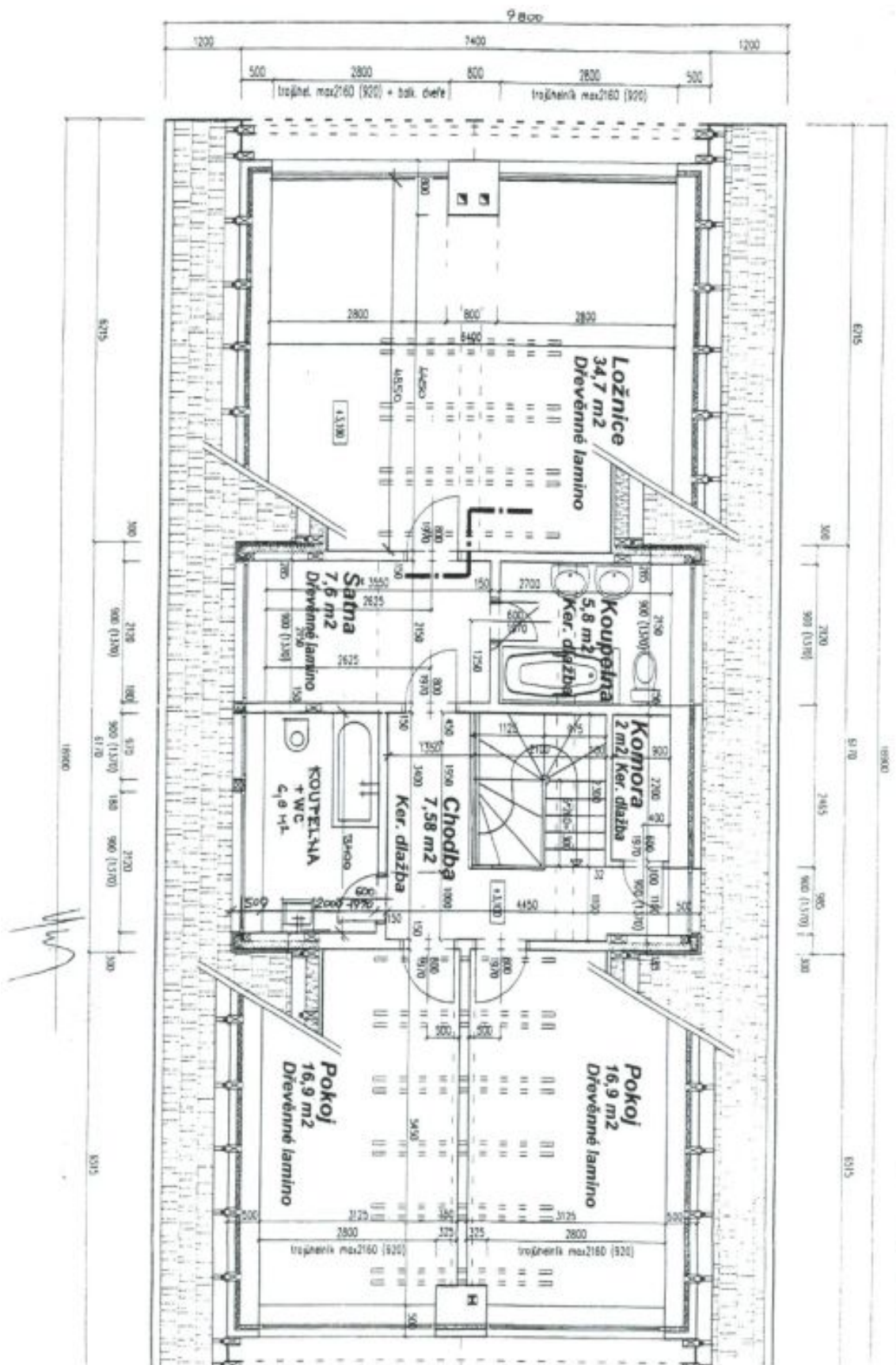




House Four-bedroom (5+kk)

Rented

350 m², Praha-západ, Horoměřice, Slunná

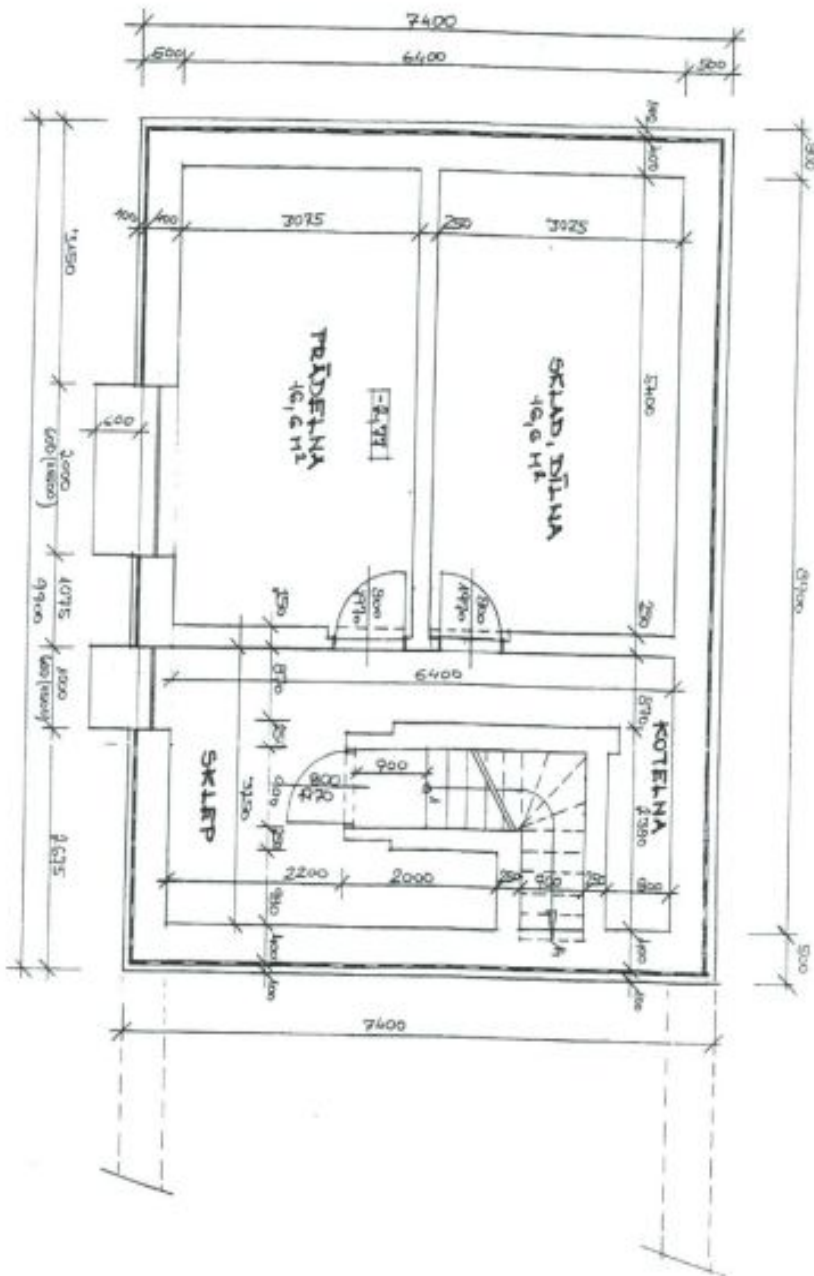




House Four-bedroom (5+kk)

Rented

350 m², Praha-západ, Horoměřice, Slunná



PUDORYS 1.P.P. 1:50