



House Four-bedroom (5+1)

Rented

164 m², Prague 6, Přední Kopanina, K Tuchoměřicům





House Four-bedroom (5+1)

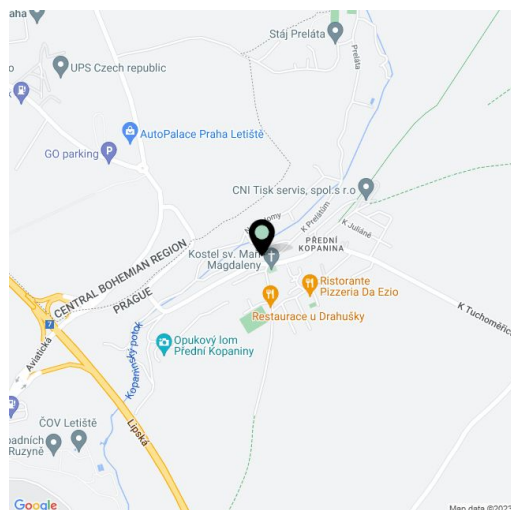
Rented164 m², Prague 6, Přední Kopanina, K Tuchoměřicům

Plot	1 006 m ²
Foot print	145 m ²
Garden	861 m ²
Parking	Garage plus parking on the plot.
Cellar	-
PENB	G
Reference number	6197
Available from	Immediately

Two story 4-bedroom 2-bathroom family house with an 840 m² garden in the green residential neighborhood of Přední Kopanina. Close to the local forest, with biking, hiking and horse riding opportunities. Convenient to the ISP international school (5 minute drive), 20 minutes by public transportation to the Dejvická metro station, 10 minutes to the Šestka shopping center.

The ground floor includes a living room with fireplace, dining area, fully fitted open kitchen and French windows to the patio, guest bedroom, shower bathroom, and separate toilet with bidet. The upper floor has 3 bedrooms, one with balcony, and bathroom with corner bath tub, double sink and toilet.

Attic storage, floating floors, built-in wardrobes, washer, dryer, dishwasher, microwave, alarm, telephone, satellite TV connection, PC network, Internet connection in each room, automatic garage door. Utilities approx. CZK 6.000/month. Available from August 8, 2020.

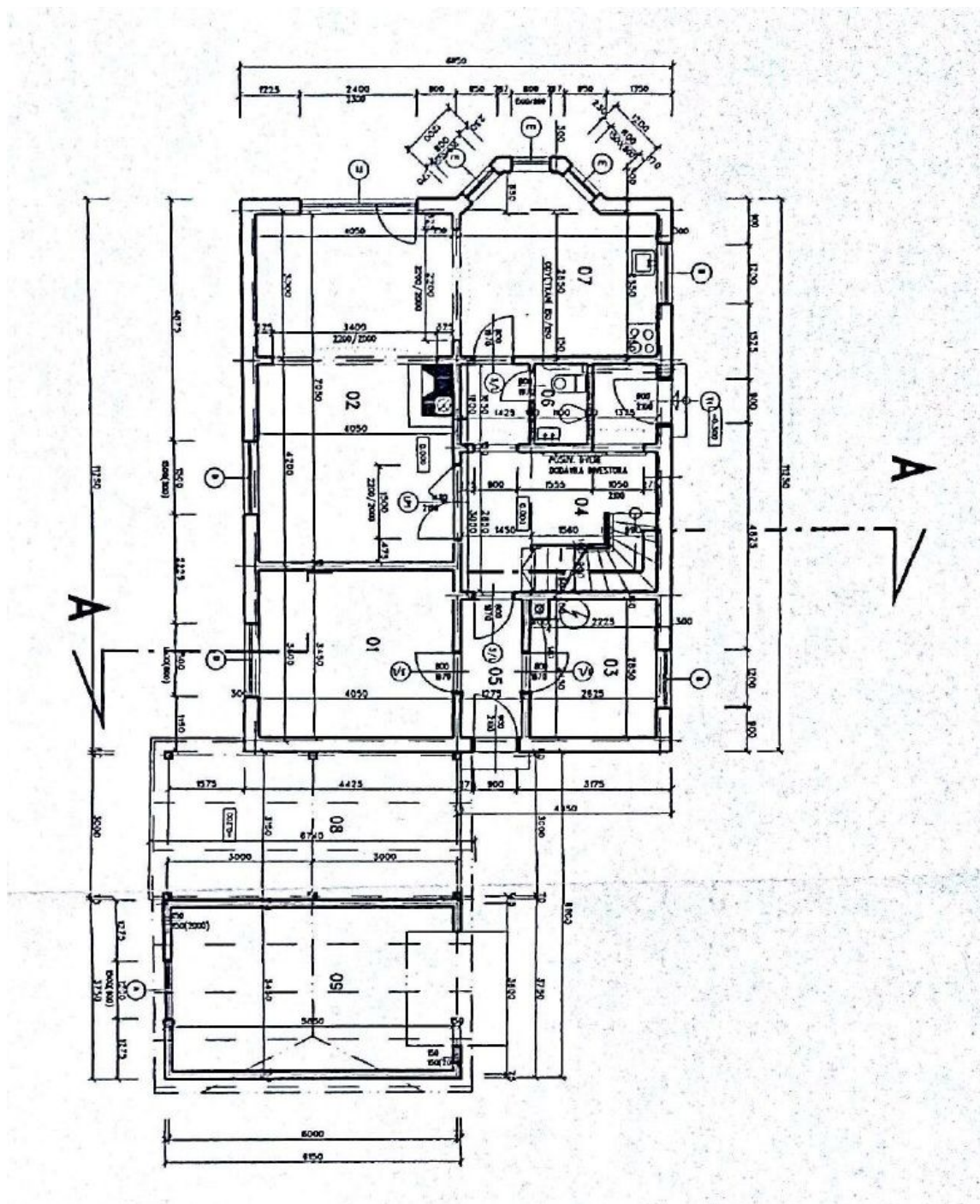




House Four-bedroom (5+1)

Rented

164 m², Prague 6, Přední Kopanina, K Tuchoměřicům





House Four-bedroom (5+1)

164 m², Prague 6, Přední Kopanina, K Tuchoměřicům

Rented

