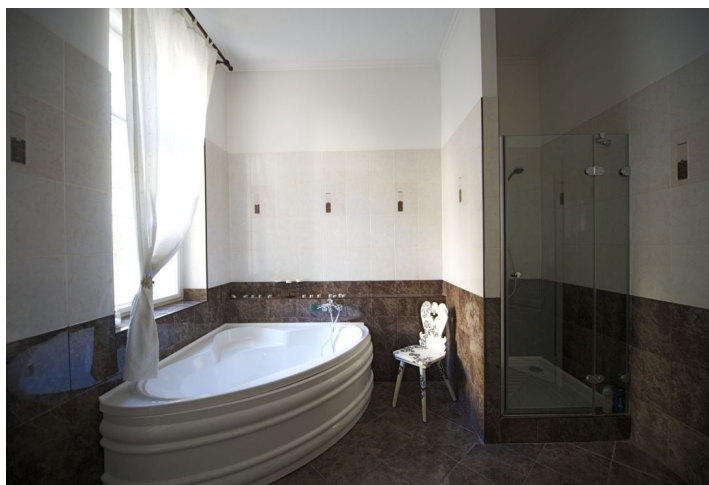
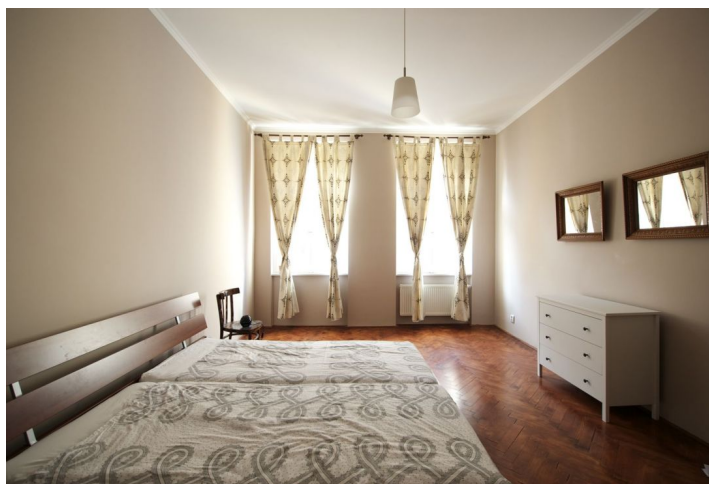




## Apartment Two-bedroom (3+kk)

Rented

120 m<sup>2</sup>, Praha 5, Smíchov, Na Bělidle





## Apartment Two-bedroom (3+kk)

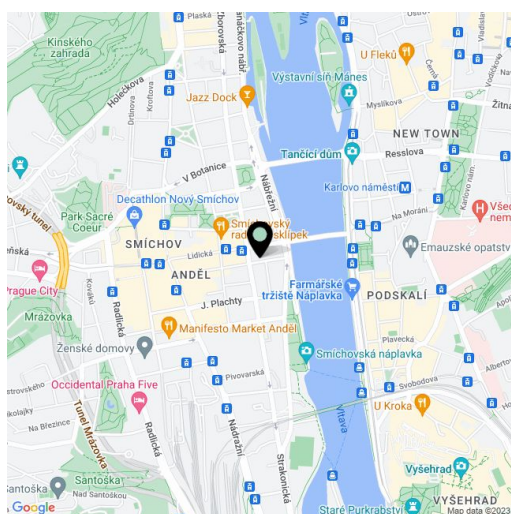
**Rented**120 m<sup>2</sup>, Praha 5, Smíchov, Na Bělidle

Total area	120 m <sup>2</sup>
Parking	-
Cellar	Yes
PENB	G
Reference number	6220
Available from	Immediately

**Fully furnished renovated 2-bedroom apartment on the 2nd floor with lift in a reconstructed traditional building from 1896, situated just a minute walk from the Anděl commercial center and metro station, and within walking distance of the Vltava riverbank.**

The apartment consists of a spacious entry hall, open plan living room with dining area and fully fitted modern kitchen, two bedrooms - one with an original historic ceramic stove, bathroom with corner bath tub, walk-in shower, double sink and utility area, walk-in closet, and a separate toilet.

Wood floors, high ceilings, security bar on entry door, washer, dishwasher, microwave, flat screen TV, Internet and satellite connection, audio entry phone. Basement storage available. Quiet living with easy connections to the center. Common building charges CZK 1200 per month. Utilities are billed extra. Available from July 21st, 2016.



\* Area of the unit according to the Civil Code. The area consists of the sum total area of the entire unit bounded by perimeter walls.