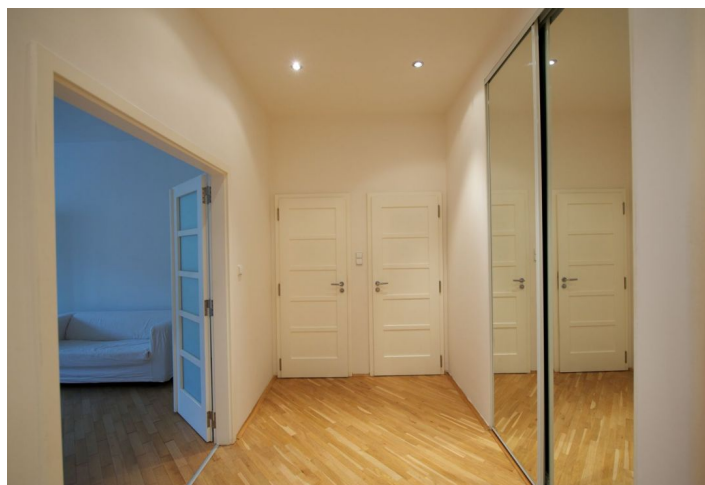




## Apartment One-bedroom (2+1)

€ 587 | CZK 14 500

80 m², Prague 6, Dejvice, Koulova





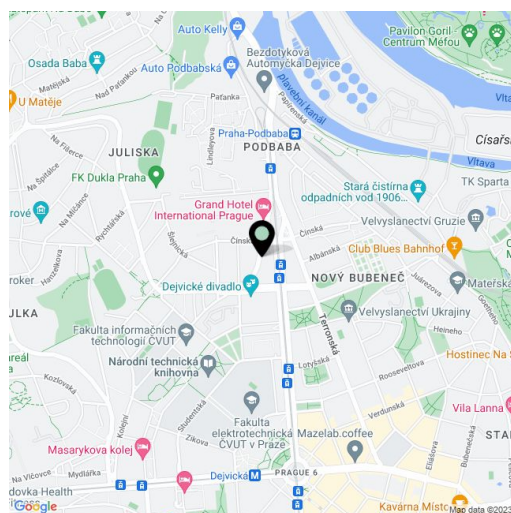
## Apartment One-bedroom (2+1)

€ 587 | CZK 14 500

80 m², Prague 6, Dejvice, Koulova

Total area	80 m²
Parking	Garage at CZK 1000/month available about a 5 minute walk from the building.
Cellar	-
PENB	G
Reference number	6252
Available from	Immediately

Partly furnished 1-bedroom apartment with a balcony on the 3rd floor in a well maintained building without a lift. Located in a quiet Prague 6 neighborhood a short walk from the Vltava embankment and Stromovka Park, a few tram stops from Dejvická metro station. Convenient to the airport and the international schools Riverside and ISP. The flat has a spacious entry hall with a built-in mirror wardrobe, living room, fully fitted kitchen with balcony facing the street, bathroom with corner bath tub, sink, bidet and toilet, guest toilet, and laundry/utility room. Other features include parquet and tile floors, large windows, high ceilings, blinds, dishwasher, microwave, telephone line, and UPC cable connection. Can be fully furnished. Electricity will be transferred to the



\* Area of the unit according to the Civil Code. The area consists of the sum total area of the entire unit bounded by perimeter walls.