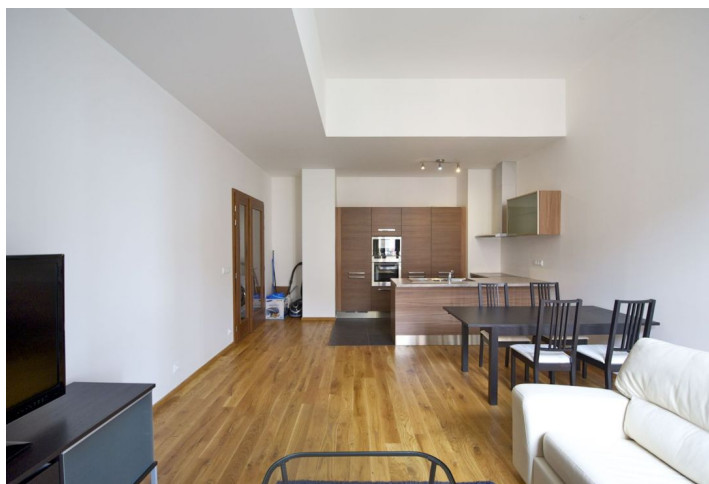




Apartment Two-bedroom (3+kk)

Rented

88 m², Prague 2, Vyšehrad, Na Děkance





Apartment Two-bedroom (3+kk)

Rented

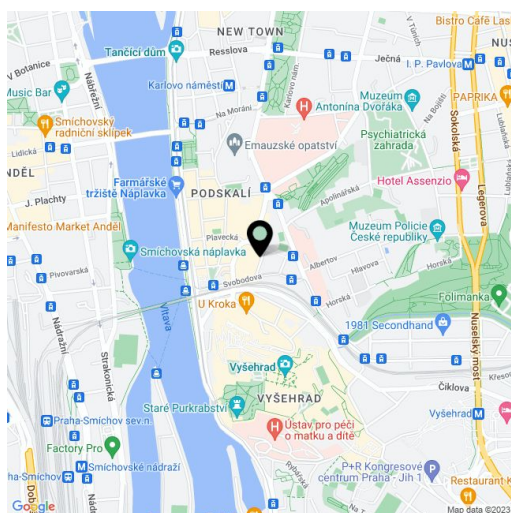
88 m², Prague 2, Vyšehrad, Na Děkance

Total area	88 m ²
Parking	Parking included.
Garage	Yes
Cellar	Yes
Service price	3300 CZK Monthly
PENB	G
Reference number	6306
Available from	Immediately

Modern furnished 2-bedroom 2-bathroom flat on the 2nd floor of an impressive refurbished Art Nouveau printing factory from 1906. Magnificent location boasting the Vltava embankment, the Vyšehrad Castle or Folimanka Park in the immediate neighborhood, with very good public transportation and easy access to sports facilities in Podolí, Žluté lázně.

The apartment has a fully fitted kitchen open to the living room, one bathroom is en-suite. T

here are 3.2 m high ceilings, large windows, oak floors, quality appliances, washer, TV, security door and video entry phone. Lift, basement storage unit, shared landscaped garden (600 m²). On-site underground parking space included and cellar. The four star hotel next door enables the residents to use hotel services including restaurant and bar (25% discount card for F&B). Free entrance to fitness center and relaxation zone. Service chrges with heating 3300 Czk. Electricity is billed separately.



* Area of the unit according to the Civil Code. The area consists of the sum total area of the entire unit bounded by perimeter walls.