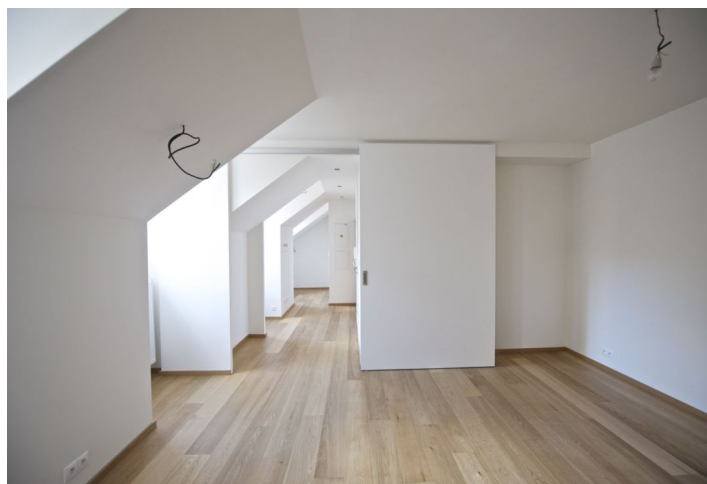




## Apartment One-bedroom (2+1)

Sold

48 m<sup>2</sup>, Prague 1, Malá Strana, Mostecká



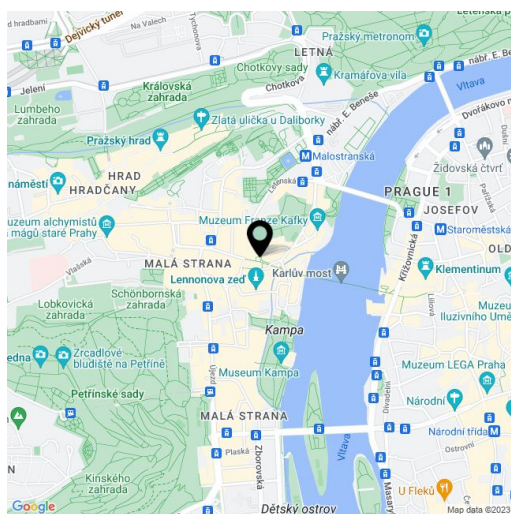


## Apartment One-bedroom (2+1)

**Sold**48 m<sup>2</sup>, Prague 1, Malá Strana, Mostecká

Total area	48 m <sup>2</sup>
Parking	-
Cellar	-
PENB	G
Reference number	6479

Unique opportunity to live in the historic center of Prague, just steps from the Charles Bridge and Malostranské náměstí Square and at the same time within close proximity to tramlines and a metro station. Modern residence with a central courtyard situated on the old Royal Route with plenty of privacy and tranquility. This apartment on the 2nd floor offers, living room, separate kitchen, bedroom and bathroom. The apartment is overlooking the inner courtyard. Interior 48.82 m<sup>2</sup>.



\* Area of the unit according to the Civil Code. The area consists of the sum total area of the entire unit bounded by perimeter walls.