



## House Three-bedroom (4+kk)

174 m<sup>2</sup>, Praha 10, Benice, Žitavská

Sold



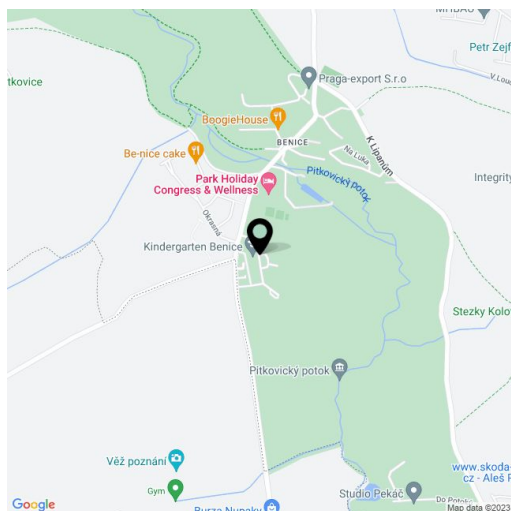


## House Three-bedroom (4+kk)

**Sold**174 m<sup>2</sup>, Praha 10, Benice, Žitavská

|                  |                    |
|------------------|--------------------|
| Total area       | 174 m <sup>2</sup> |
| Plot             | 445 m <sup>2</sup> |
| Floor area       | 157 m <sup>2</sup> |
| Balcony          | 17 m <sup>2</sup>  |
| Parking          | Yes                |
| Garage           | Yes                |
| Cellar           | -                  |
| PENB             | G                  |
| Reference number | 6552               |

Semidetached family house with garden and garage located in architecturally unified and impressive residential area on the outskirts of Prague. Good connection to Prague: 15 minutes by car (highway D1), within the reach of the Čestlice shopping area and all public amenities in Průhonice. There is an entrance hall with walk-in closet, kitchen and living room with terrace on the ground floor. The first floor offers 3 bedrooms with balconies (master bedroom with en-suite bathroom and walk-in closet) and main bathroom. The property is offered completely finished in higher standard. The purchase price is including VAT. Interior 156.5 m<sup>2</sup>, terrace/balcony 17.4 m<sup>2</sup>, garden 445 m<sup>2</sup>.

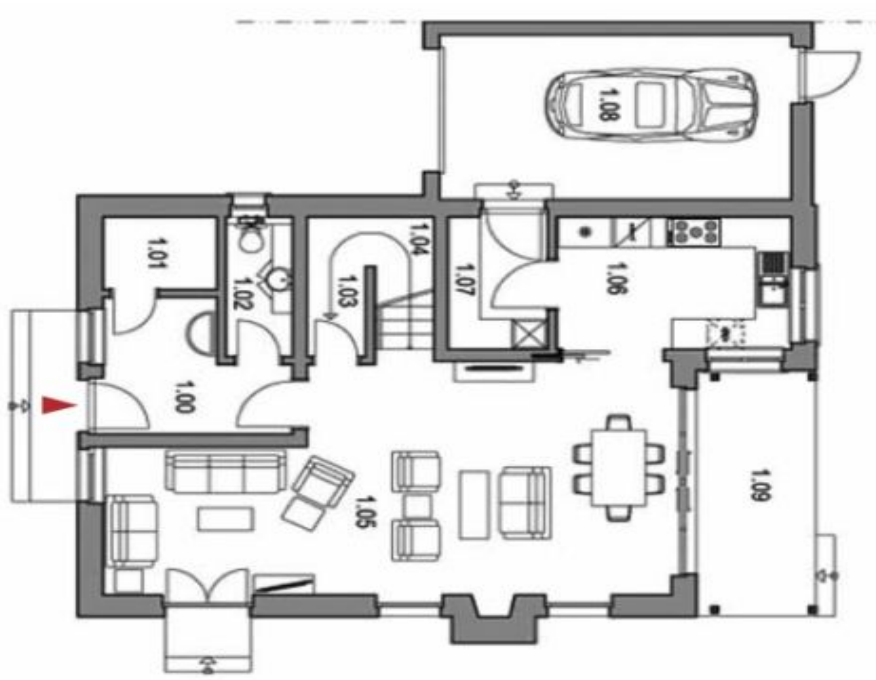




## House Three-bedroom (4+kk)

174 m<sup>2</sup>, Praha 10, Benice, Žitavská

Sold



PŮDORYS 1. NP  
GROUND FLOOR



PŮDORYS 2. NP  
FIRST FLOOR





# House Three-bedroom (4+kk)

174 m<sup>2</sup>, Praha 10, Benice, Žitavská

Sold

