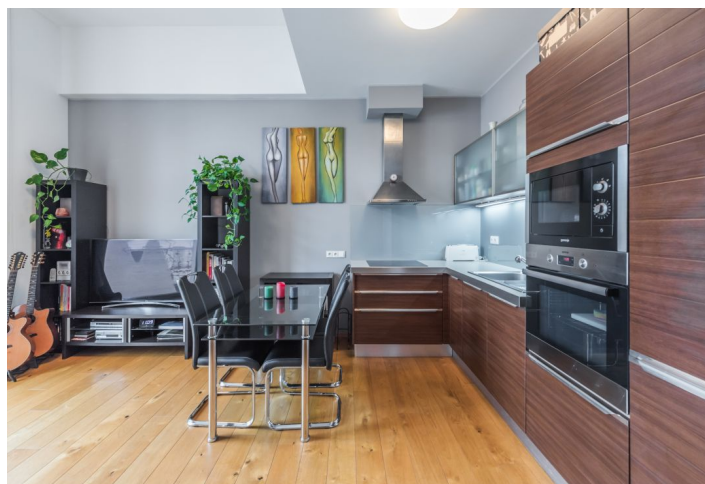




## Apartment One-bedroom (2+kk)

Rented

55 m<sup>2</sup>, Prague 2, Nové Město, Na Děkance





## Apartment One-bedroom (2+kk)

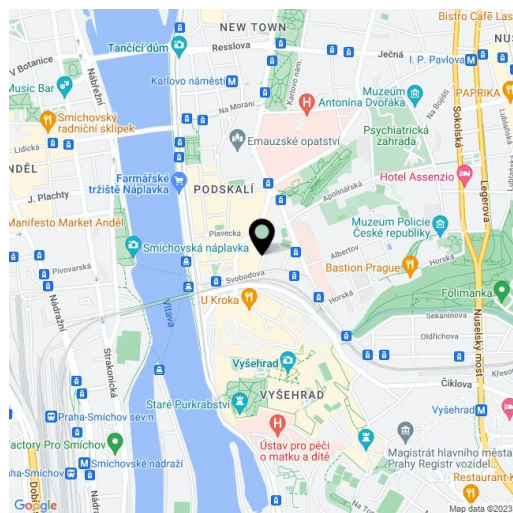
**Rented**55 m<sup>2</sup>, Prague 2, Nové Město, Na Děkance

Total area	61 m <sup>2</sup>
Floor area*	55 m <sup>2</sup>
Balcony	6 m <sup>2</sup>
Parking	One on-site underground parking space.
Garage	Yes
Cellar	Yes
Service price	Fixed payment for services including heating is CZK 5,000/month. Electricity - transferred to the tenant.
PENB	G
Reference number	6654
Available from	Immediately

This modern furnished apartment with 2 balconies is on the 3rd floor of the Hermitage Residence - an impressive refurbished Art Nouveau printing factory from 1906. A magnificent location boasting the Vltava embankment, Vyšehrad Castle, and Folimanka Park in the immediate neighborhood, with very good public transportation and easy access to full amenities incl. sports facilities in Žluté lázně and the Podolí swimming pool.

The apartment offers an open plan living room with a fully fitted kitchen and balcony, one bedroom with large built-in wardrobes and a balcony, a bathroom with a bathtub and toilet, and an entrance hall with built-in wardrobes and storage. Both balconies face a quiet landscaped back yard garden.

Airy rooms, oak parquet floors, tiles, secure double-bolted entrance door, bathroom fixtures and fittings by Newform, Hansgrohe, and Kaldewei, blinds, blackout blind in the bedroom, exterior blinds in the bathroom, dishwasher, microwave oven, video entry phone, 3 sq. m. basement storage unit, shared garden (600 sq. m.). One underground garage parking space is included.



\* Size of the unit according to the Housing Act.  
The area consists of the sum total of the internal area of every room.