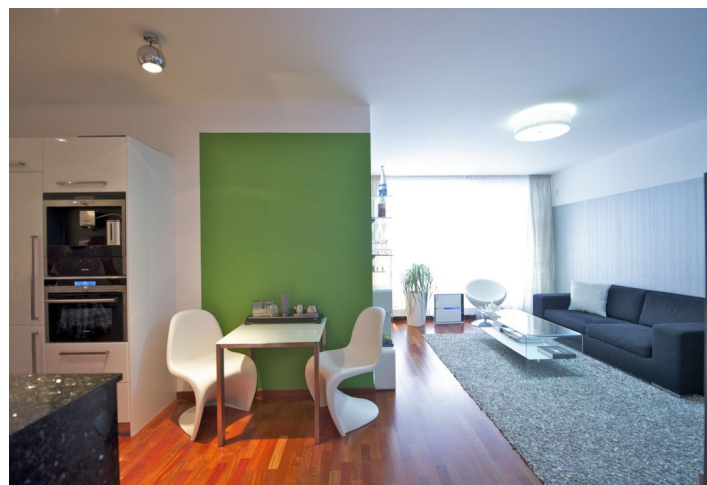
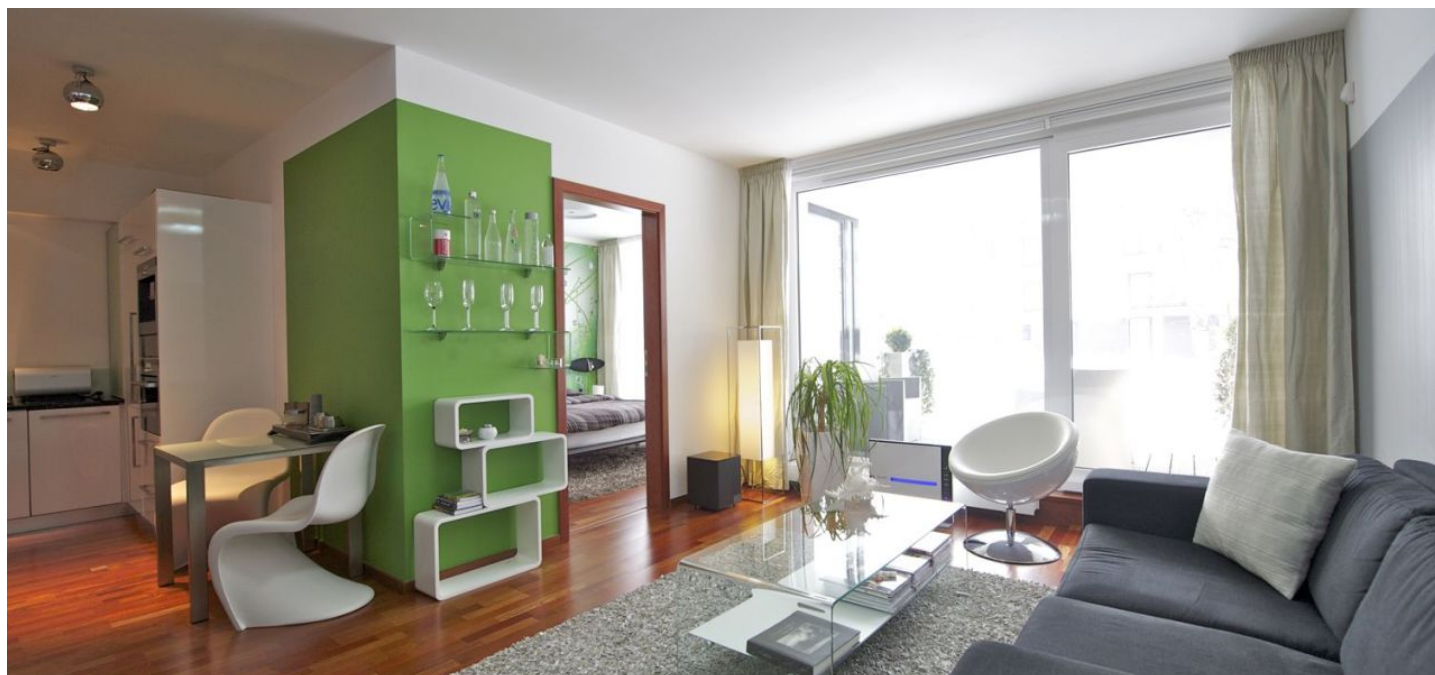




## Apartment One-bedroom (2+kk)

Rented

56 m<sup>2</sup>, Prague 2, Vinohrady, Italská





# Apartment One-bedroom (2+kk)

Rented

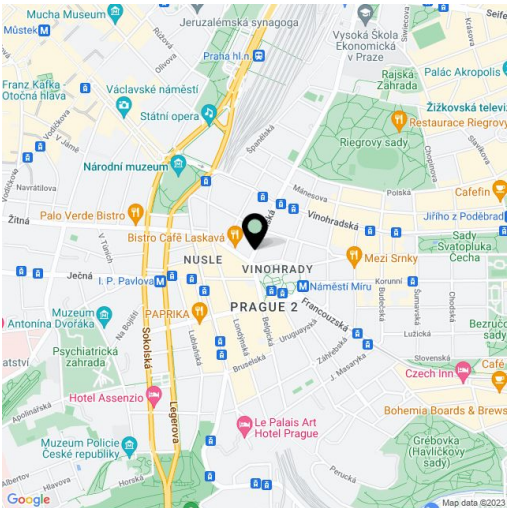
56 m², Prague 2, Vinohrady, Italská

Total area	64 m²
Floor area*	56 m²
Terrace	8 m²
Parking	Parking available.
Garage	Yes
Cellar	Yes
PENB	G
Reference number	6692
Available from	Immediately

Stylish flat for rent in Prague. Furnished 1-bedroom architect designed apartment with a 8 m² covered terrace and garden access on the ground floor of the recently built Riegrovy Sady Residence right across the park and just a short walk to Wenceslas Square.

With a space-efficient layout, the apartment features a fully fitted kitchen opening into the living room and a bedroom, both with access to the courtyard oriented terrace providing quiet relaxation. There is a bathroom with bath tub, double sink and toilet, and an entry hall.

Quality materials and finishes, air-conditioning, floor-to-ceiling windows and French doors, built-in wardrobes, wood floors and tiles, floor heating, security door, washer/dryer, microwave, induction cooktop, LED TV 32", video entry phone, alarm, basement storage unit, lift. One on-site garage parking space included. Secure gated community with 24-hour reception and security cameras, plus on-site caretaker and management. The residence offers wonderful open views of the Prague panorama including the Prague Castle and Petřín Hill. Bus stop close by, a short walk to trams and metro. One parking space in garages at CZK 3,700/month. Common building charges CZK 3,800/person/month. Deposit for utilities CZK 1,600/month.



\* Area of the unit according to the Civil Code. The area consists of the sum total area of the entire unit bounded by perimeter walls.