



## Apartment Two-bedroom (3+kk)

Sold

100.9 m<sup>2</sup>, Prague 6, Bubeneč, Vietnamská



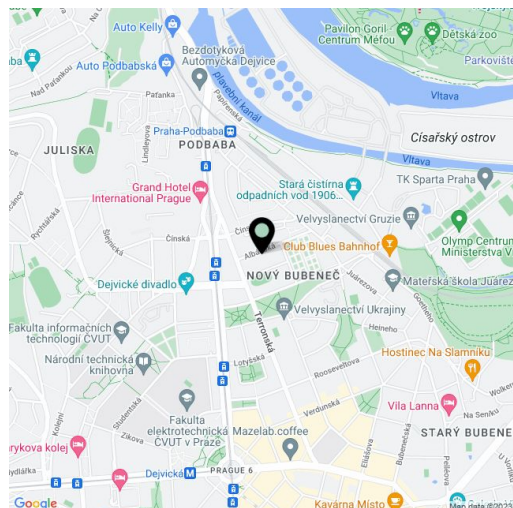


## Apartment Two-bedroom (3+kk)

**Sold**100.9 m<sup>2</sup>, Prague 6, Bubeneč, Vietnamská

<b>Total area</b>	111 m <sup>2</sup>
<b>Floor area*</b>	101 m <sup>2</sup>
<b>Balcony</b>	10 m <sup>2</sup>
<b>Parking</b>	2 garage parking spaces
<b>Garage</b>	Yes
<b>Cellar</b>	Yes
<b>PENB</b>	G
<b>Reference number</b>	6724

Architecturally unique modern private city residence with 7 residential units. Designed by the renowned architectural studio de.fakto. The townhouse offers, on its four floors above the ground and one basement floor, it is architecturally designed in a way that allows apartments to be interconnected up to the alternative of creating a loft apartment across the entire storey and underground parking with private cellars. Modern practical apartment with a terrace is situated on the first floor and it features an open concept of kitchen, dining and living area with a glass wall and access on the terrace. There are main bedroom with again glass wall, second bedroom with walk-in closet, bathroom, utility room/walk-in closet, entry hall with a space for built in wardrobes and a separate toilet. The purchase price includes VAT, cellar and 2 garage parking spaces. The interior of the apartment is 100.74 m<sup>2</sup>, the terrace is 10.1 m<sup>2</sup>. The project is located in a residential neighborhood, a few minute walk from the complete amenities of Vitezne namesti and from Prague's largest park Stromovka.



\* Area of the unit according to the Civil Code. The area consists of the sum total area of the entire unit bounded by perimeter walls.



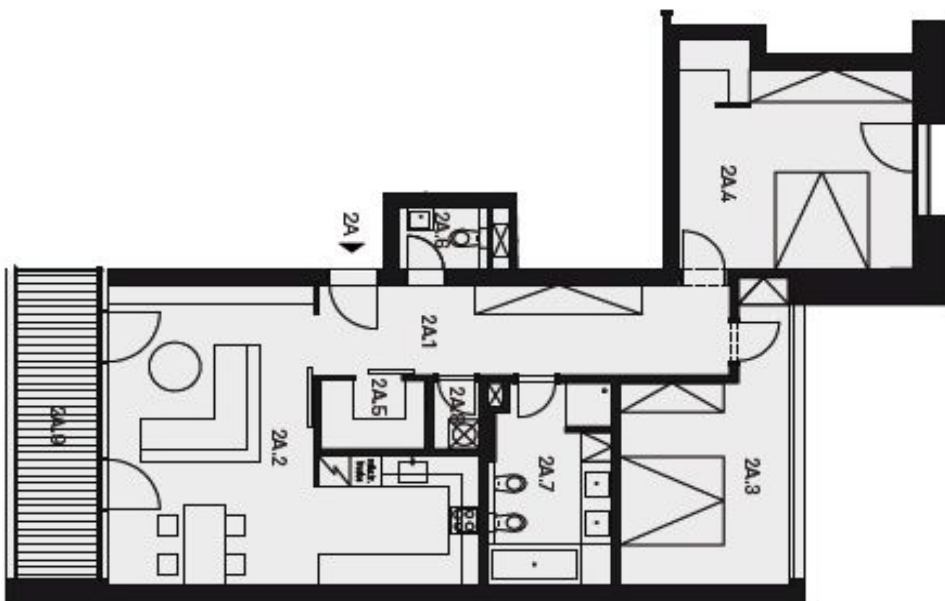


# Apartment Two-bedroom (3+kk)

100.9 m<sup>2</sup>, Prague 6, Bubeneč, Vietnamská

Sold

Vila Verde Prague



## Byt 2A

2. NP  
3+kk 100,74 m<sup>2</sup>  
Balkón 10,11 m<sup>2</sup>

Číslo	Místnost	Výměra (m <sup>2</sup> )
2A.1	Chodba	15,23
2A.2	Obývací pokoj	33,52
2A.3	Pokoj	15,88
2A.4	Ložnice	19,98
2A.5	Šatna	2,88
2A.6	WC	2,24
2A.7	Koupelna	9,73
2A.8	Komora	1,30
2A.9	Balkón	10,11

Umístění bytu v patře





## Apartment Two-bedroom (3+kk)

100.9 m<sup>2</sup>, Prague 6, Bubeneč, Vietnamská

Sold

