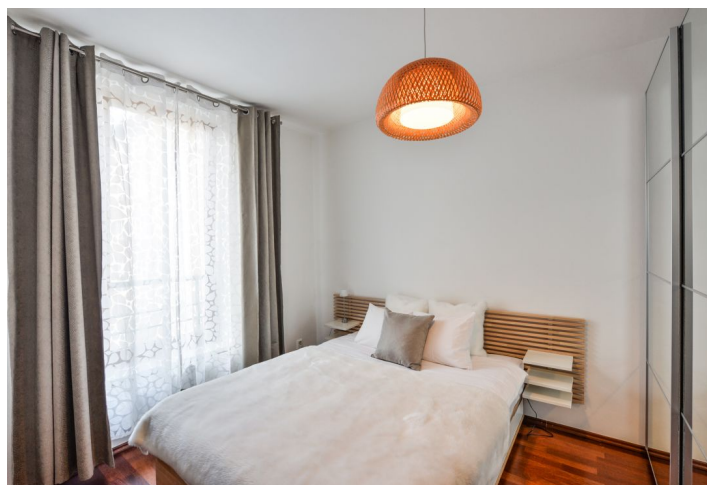




## Apartment Two-bedroom (3+kk)

Rented

82 m<sup>2</sup>, Praha 6, Břevnov, Břevnovská





## Apartment Two-bedroom (3+kk)

Rented

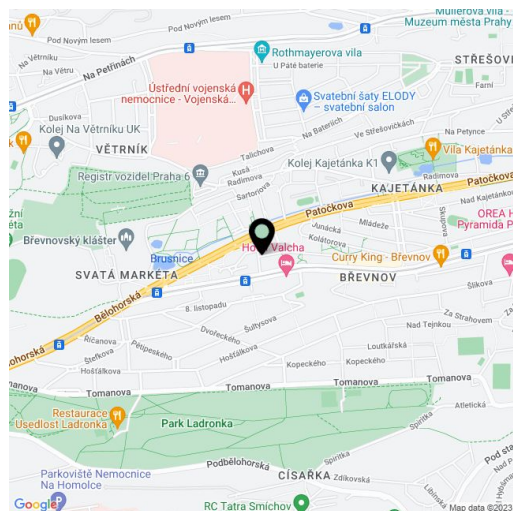
82 m<sup>2</sup>, Praha 6, Břevnov, Břevnovská

Total area	85 m <sup>2</sup>
Floor area*	82 m <sup>2</sup>
Balcony	3 m <sup>2</sup>
Parking	One on-site garage parking space.
Garage	Yes
Cellar	-
PENB	C
Reference number	6727
Available from	Immediately

Furnished 2-bedroom flat with a balcony, on the second floor in a modern apartment building with lift, well kept inner garden with a playground and underground parking. Located within walking distance of the Prague Castle and Strahov Monastery, within easy reach of the Ladronka and Hvězda Parks, and with easy access to international schools and the airport. Tram stop is just a few minute walk, plus buses to central Prague (bus stop steps from the building).

The flat includes an entry hall with built-in wardrobes, a bright corner living room with a fully fitted open kitchen and French windows leading to a narrow **balcony**, two separate bedrooms, a walk-in closet, bathroom with bath and toilet, and a guest toilet.

Wooden and tile floors, security entry door, outdoor blinds with remote control in the living room, washer / dryer, dishwasher, basic kitchenware, video entry phone. Secure **shared garden**. One on-site **garage parking** space available at CZK 2000/month. Monthly deposit for common building charges, water and heating CZK 4000. Electricity will be transferred to the tenant. Available from July 1, 2018.



\* Area of the unit according to the Civil Code. The area consists of the sum total area of the entire unit bounded by perimeter walls.