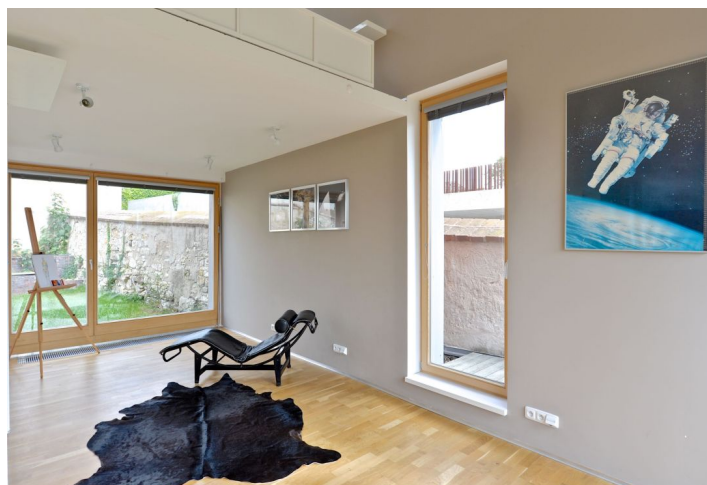
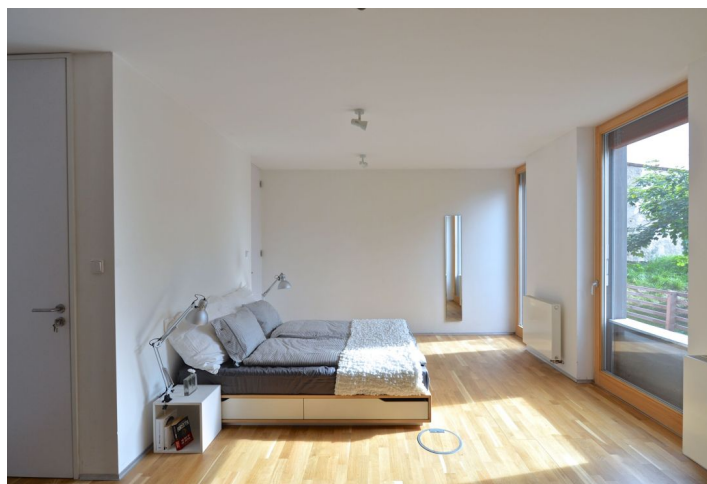
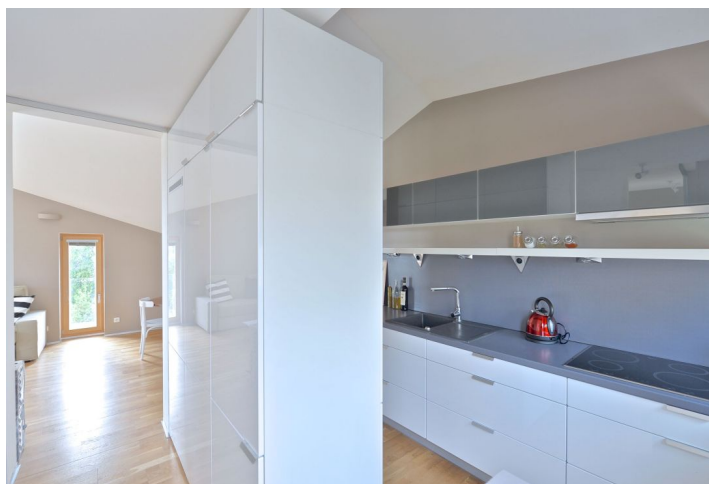




Apartment Three-bedroom (4+kk)

Rented

120 m², Prague 2, Nové Město, Horská





Apartment Three-bedroom (4+kk)

Rented

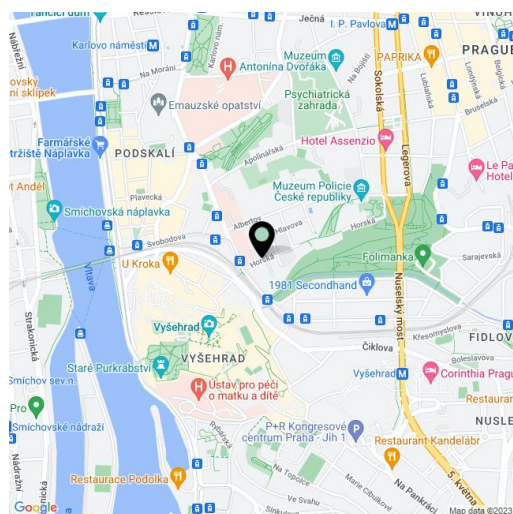
120 m², Prague 2, Nové Město, Horská

Total area	120 m ²
Parking	One outdoor parking space available.
Cellar	-
PENB	G
Reference number	6886
Available from	Immediately

Single furnished flat in a very special completely reconstructed cozy 2-3-bedroom 3-4-bathroom house with two small gardens in close vicinity of the Nuselský bridge on the D1 highway, yet completely shut off from the traffic and surrounded by a gated park and green areas. With nice views of the historic city, the property is located within walking distance of the Vltava river, the Folimanka park, the Vyšehrad Castle and Karlovo Náměstí Square.

The home is set in a slope and laid out on three levels, with quality materials and modern design. The main floor features an open plan area with lots of floor-to-ceiling French windows, a fully fitted kitchen, living room, balcony, and a guest toilet. Upstairs is a gallery with a skylight and shower bathroom and toilet. The lower ground floor has 2 bedrooms, each with an en-suite bathroom, a walk-in closet, and French doors to the garden. The master bedroom could be divided into two parts and the walk-in closet could be converted into the fourth en-suite bathroom.

Front and back patio, attic storage, circular staircase, washer, dishwasher, Rainbow shower head, massage shower, bidet showers, TV, video entry phone, Internet, satellite possible. Within walking distance of I.P.Pavlova metro station. Utilities CZK 5000/month.



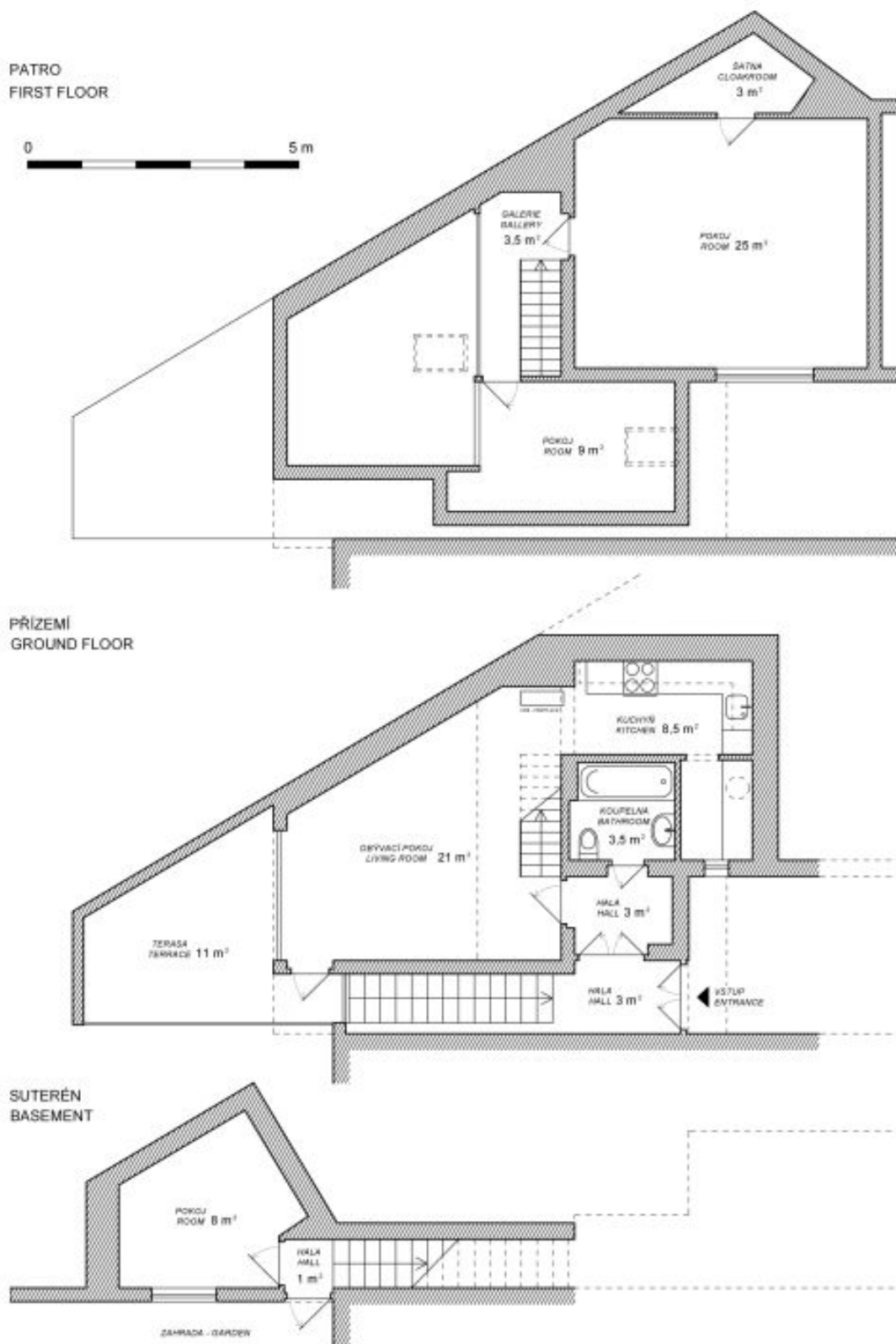
* Area of the unit according to the Civil Code. The area consists of the sum total area of the entire unit bounded by perimeter walls.



Apartment Three-bedroom (4+kk)

Rented

120 m², Prague 2, Nové Město, Horská

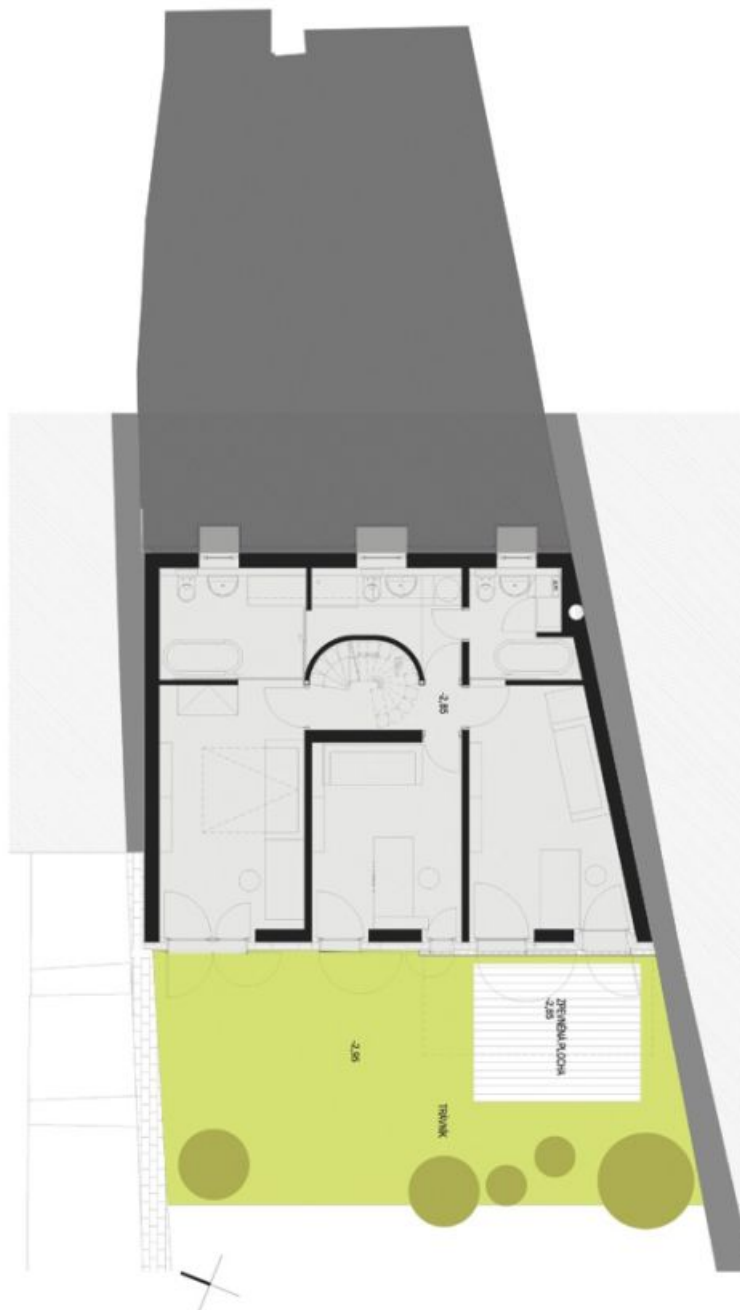




Apartment Three-bedroom (4+kk)

120 m², Prague 2, Nové Město, Horská

Rented

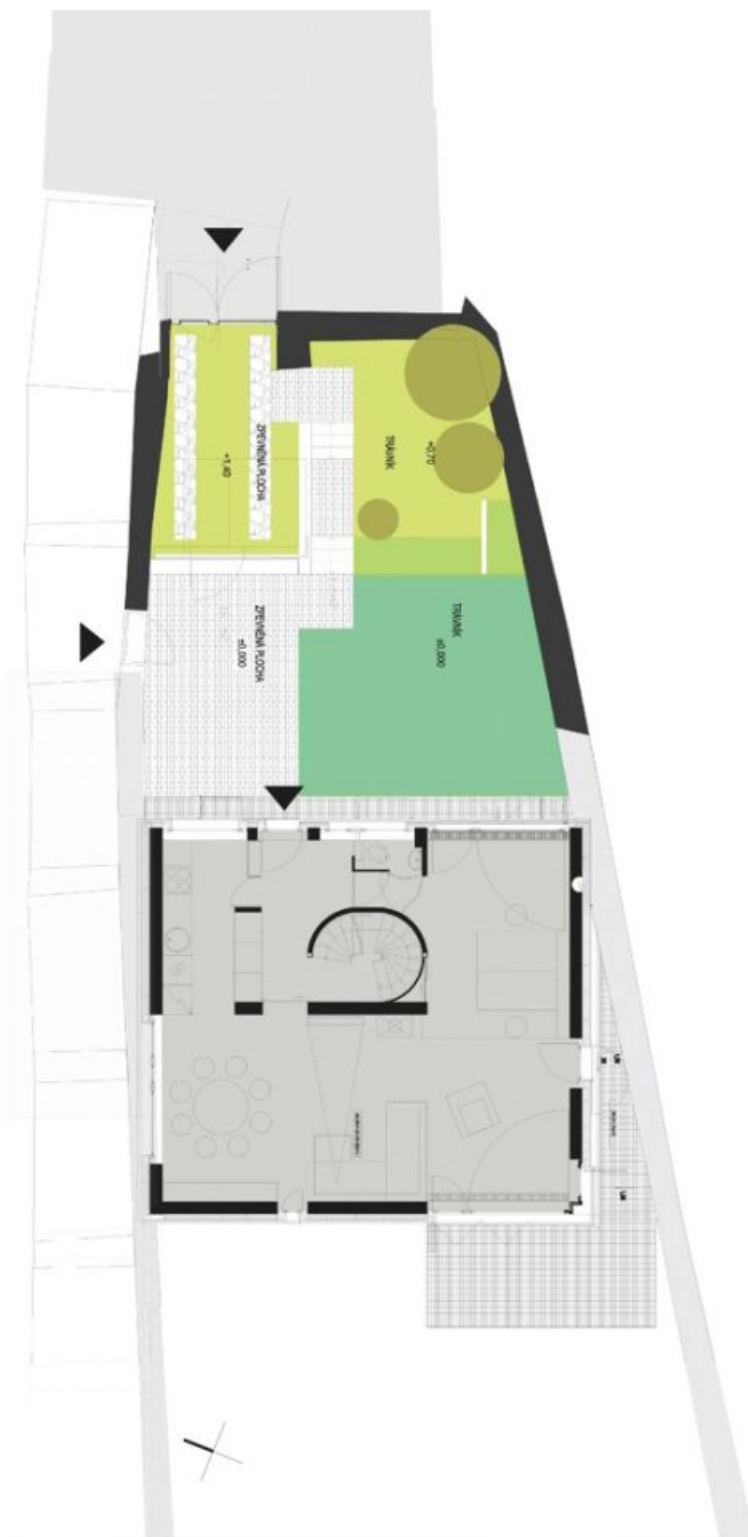




Apartment Three-bedroom (4+kk)

Rented

120 m², Prague 2, Nové Město, Horská





Apartment Three-bedroom (4+kk)

Rented

120 m², Prague 2, Nové Město, Horská

