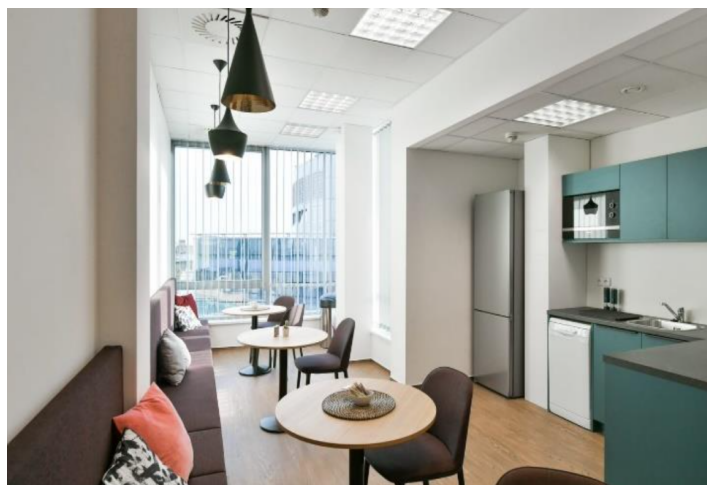




Office space

Prague 4, Nusle, Lomnického

Rented



**Office space****Rented**

Prague 4, Nusle, Lomnického

Service price	181 CZK monthly per m ²
Available area	649 m ²
Cellar	-
Parking	EUR 130 / ps / month
PENB	A
Reference number	7235

Office space for lease (class A) on the 7th floor in a modern office building in a prosperous business district in Prague 4, only three stops from Wenceslas Square. The premises offer garage parking spaces, a meeting room, exercise hall, or bicycle storage.

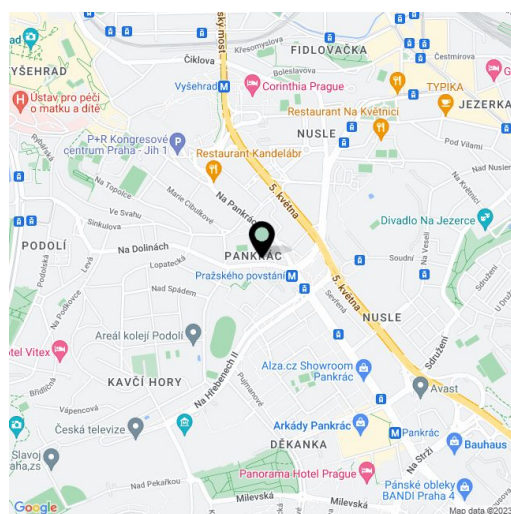
Location:

Very good accessibility by car and public transport – a prime location opposite the entrance to the Pražského povstání metro station (line C) and direct access to the D1 highway. In close vicinity of bus and tram stops, easy access the city center by public transport.

Features and services:

- Bright, fully air-conditioned premises
- Raised floors
- Carpeted and tiled floors
- Openable windows
- Kitchenette and toilets
- Restaurant and café
- Meeting room on the ground floor
- Multifunctional building management and security system
- Gym, showers, and a bicycle storage area
- Modern reception
- 24/7 security
- Card-controlled access
- Storage units
- Underground parking

Rental and service charges listed without VAT. Lessee pays no commission.





Office space

Prague 4, Nusle, Lomnického

Rented



7. patro / 7th floor