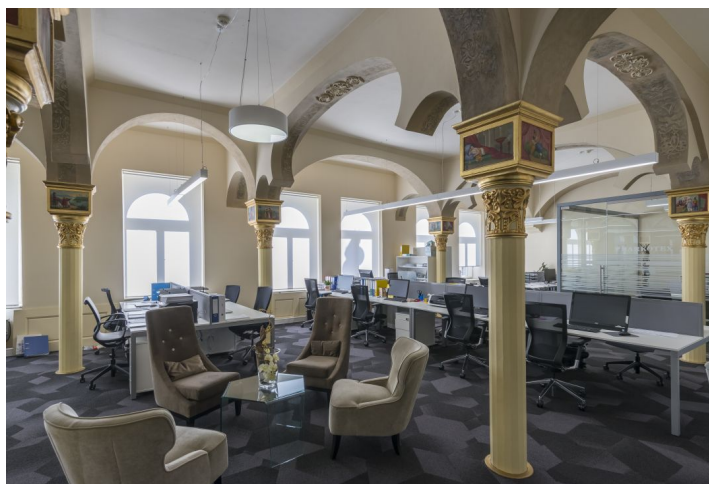




Retail space

Prague 1, Nové Město, Havlíčkova

Ask for price



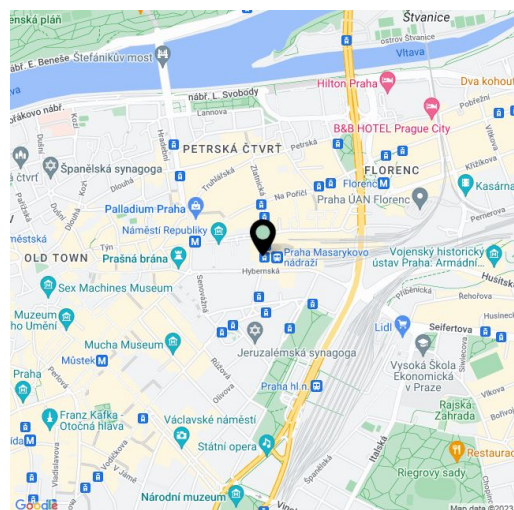


Retail space

Prague 1, Nové Město, Havlíčkova

[Ask for price](#)

Available area	1 315 m ²
Parking	Yes
PENB	B
Reference number	7241



Havlíčkova Plaza is an attractive mixed-use building featuring class-A office space in a lucrative location in Prague's city centre, just steps from Náměstí Republiky. This office complex is the result of meticulously renovated 19th century building with newly added sections. It is complete with an elegant reception, two elevators, 24/7 security, and underground parking spaces. Havlíčkova Plaza is located in the centre of Prague's business life, in a neighbourhood featuring a wide range of services, including shopping malls, luxurious hotels, a metro station, tram-stops, and two railway stations.

Location:

Close to the Náměstí Republiky (line B) metro station, tram, and bus stops, two train stations, and easy access to the highway. The area is currently undergoing a dynamic transformation into a modern, architecturally innovative business center—a promising future location from many perspectives.

Features and services:

- 24/7 security
- CCTV
- Elevator
- Openable windows
- Mechanical ventilation/air exchange
- Underground parking
- Optimization of the building's heating, cooling, and ventilation systems

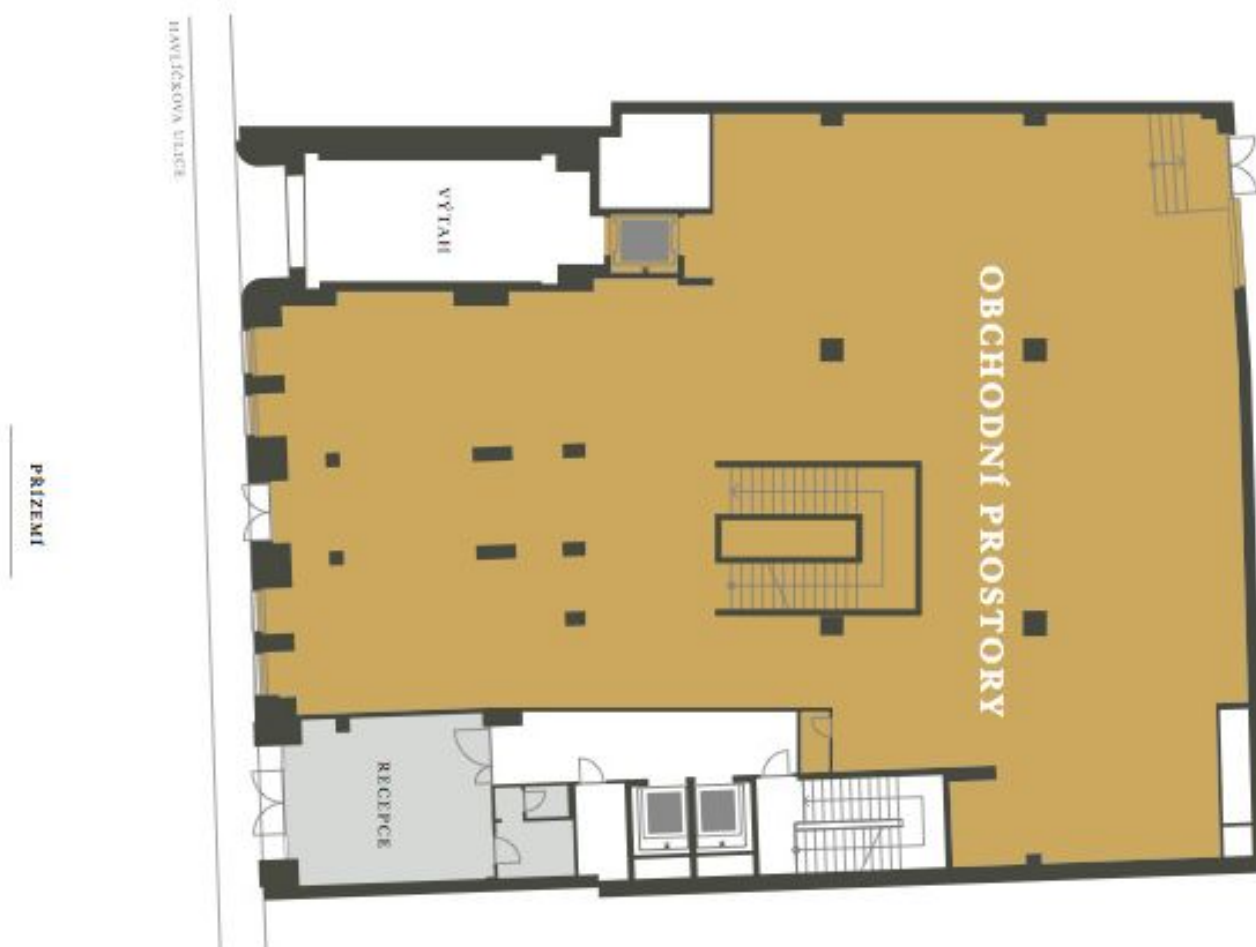
Rental and service charges listed without VAT. Lessee pays no commission.



Retail space

Prague 1, Nové Město, Havlíčkova

Ask for price

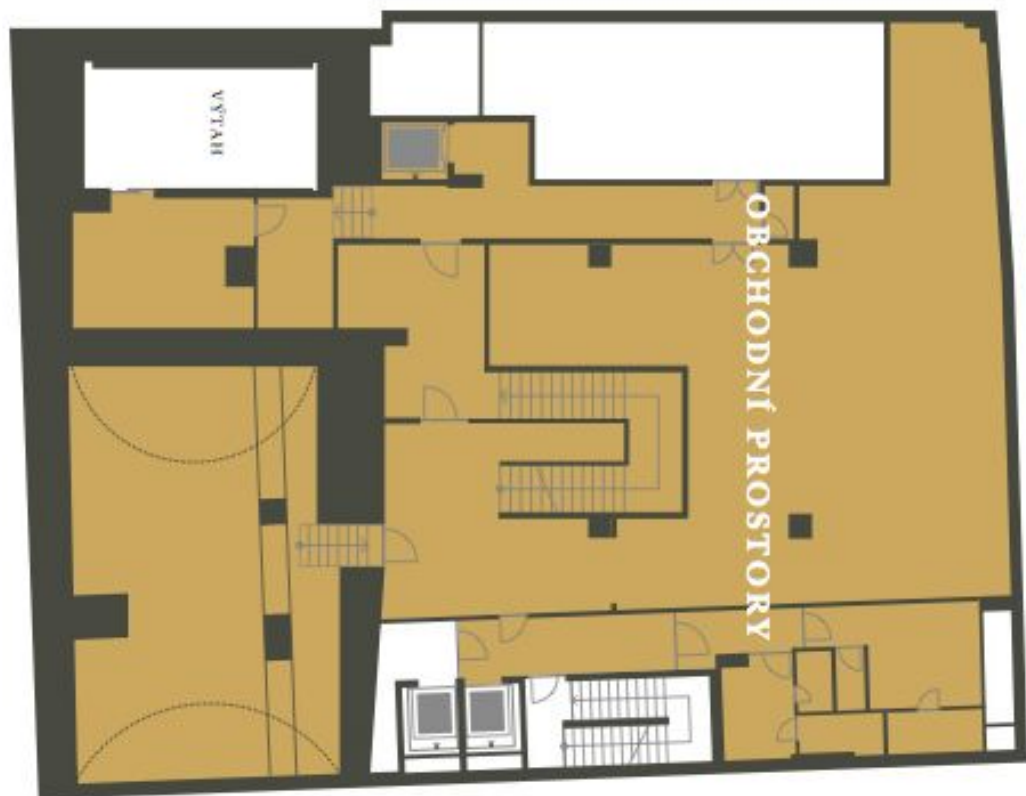




Retail space

Prague 1, Nové Město, Havlíčkova

Ask for price





Retail space

Prague 1, Nové Město, Havlíčkova

Ask for price

