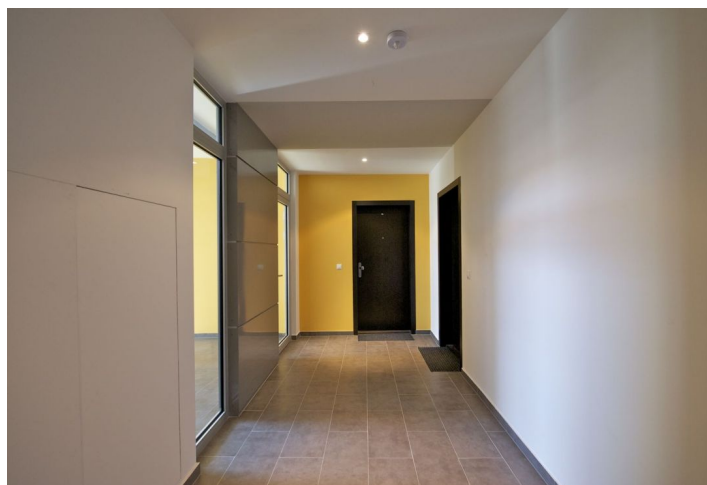




Apartment Studio (1+kk)

45 m², Praha 7, Holešovice, Jankovcova

Rented





Apartment Studio (1+kk)

45 m², Praha 7, Holešovice, Jankovcova

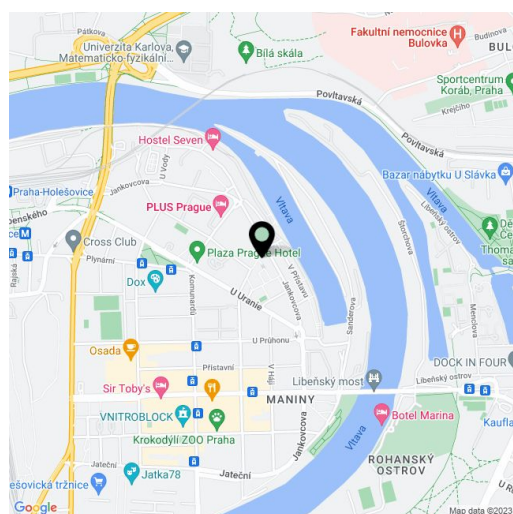
Rented

Total area	45 m ²
Parking	On-site underground parking space included in the price.
Cellar	Yes
PENB	G
Reference number	7461
Available from	Immediately

Fully furnished modern studio flat with far reaching views in the newly built PRAGUE MARINA residential development on the Vltava riverbank, in the fast growing Prague 7 area, with good connections to the city center.

The apartment features a fully fitted open plan kitchen, sleeping zone partly separated by a sliding door, living area with an entire glass wall overlooking the river, shower bathroom with sink and toilet, and an entry hall with built-in wardrobes. Wood floors, microwave, dishes and kitchenware, video entry phone, plasma TV, telephone line, Internet, security door, 3.4 m² basement storage. Third floor with lift.

Amenities include 24-hour reception and security camera system. Just a few tram stops to metro stations Palmovka (line B), Vltavská and Nádraží Holešovice (line C). Within walking distance of the gym, tennis and squash courts as well as a golf course. Services CZK 3500/month, electricity will be transferred to the tenant's name.



* Area of the unit according to the Civil Code. The area consists of the sum total area of the entire unit bounded by perimeter walls.