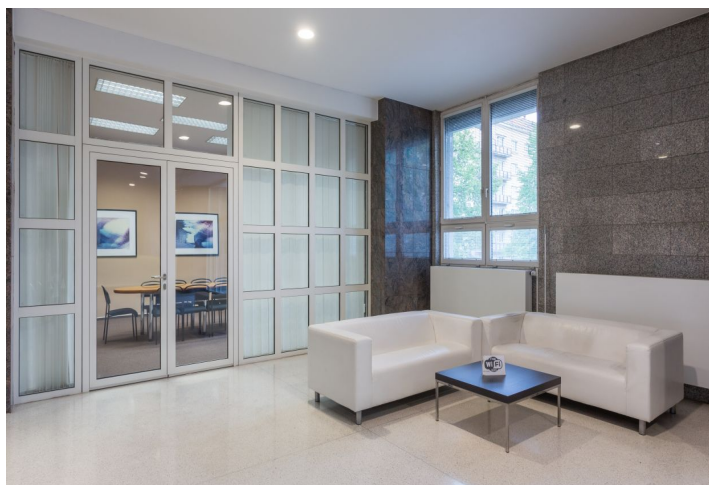




Office space

Prague 4, Nusle, Táborská

Rented





Office space

Prague 4, Nusle, Táborská

Rented

Service price	145 CZK monthly per m ²
Available area	252 m ²
Cellar	-
Parking	EUR 80 / ps / month
PENB	G
Reference number	7601

Office space for lease on the 7th floor in seven story building situated in a very attractive area of Prague 4 with a pleasant and quiet atmosphere near the center with excellent transport links, cafes, and parking in the atrium.

Location:

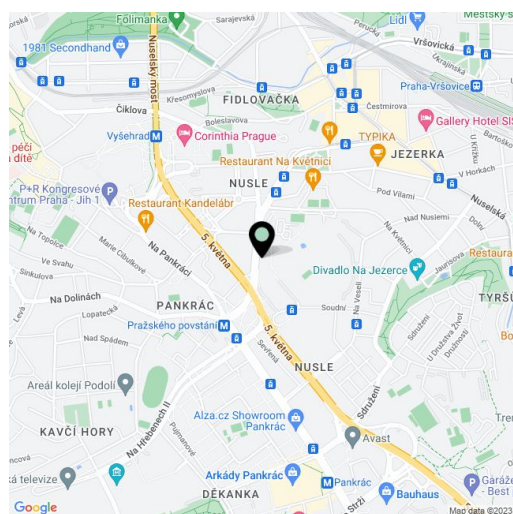
Excellent access by car and public transport - just a few minutes' walk from the Vyšehrad and Pražského povstání metro stations (line C) and the Vozovna Pankrác, Pražského povstání, and Palouček tram stops.

Features and services:

- Air conditioning
- Flexible layout
- Central reception
- 24/7 security
- Access by magnetic cards
- Two modern elevators
- Possibility to reserve meeting rooms
- Suspended ceilings
- Carpeting
- Modern office lighting
- Central heating
- Fiber-optic cable
- 23 parking spaces

Photos may not represent the actual condition of the premises.

Rental and service charges listed without VAT. Lessee pays no commission.





Office space

Prague 4, Nusle, Táborská

Rented

