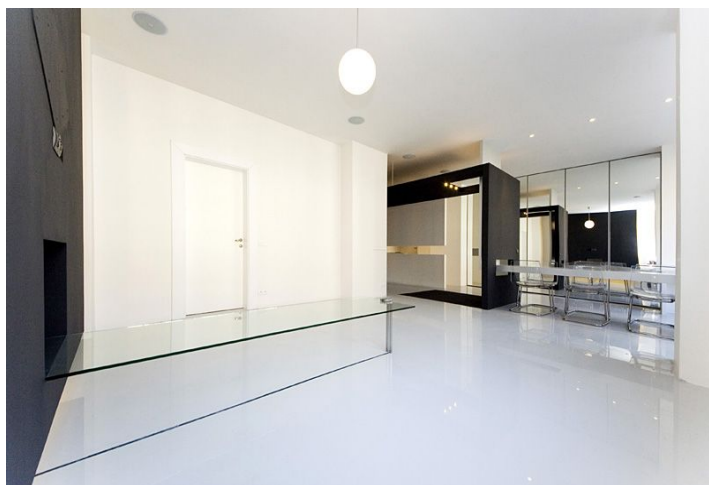
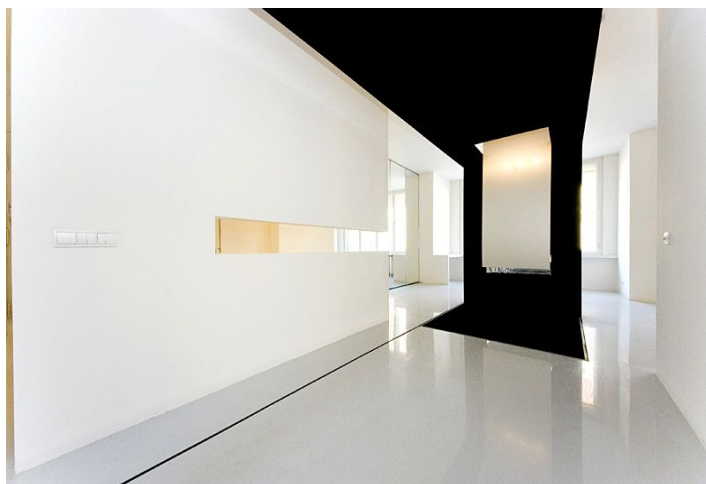




Apartment Two-bedroom (3+kk)

€ 1 196 | CZK 30 000

106 m², Prague 1, Nové Město, Národní





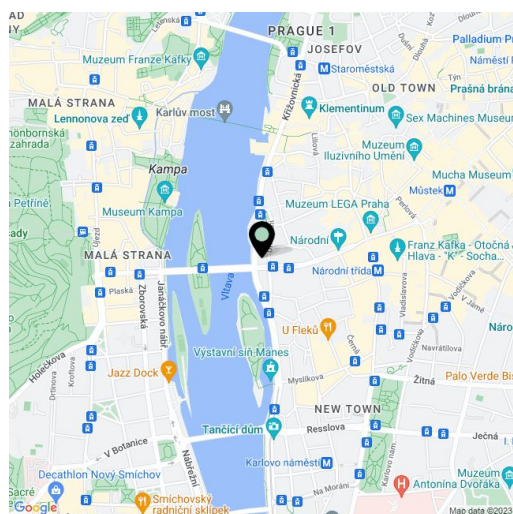
Apartment Two-bedroom (3+kk)

€ 1 196 | CZK 30 000

106 m², Prague 1, Nové Město, Národní

Total area	106 m ²
Parking	-
Cellar	-
PENB	G
Reference number	7723
Available from	Immediately

Ultramodern atypical architect designed renovation of a 2-bedroom 2-bathroom apartment on the 2nd floor of a well kept Functionalist building with a lift in the very center of Prague. Within instant reach of shopping, dining and entertainment, and major tram and metro links. Quiet despite the central location with high pedestrian traffic. There is an open living room with dining area and a fully fitted kitchen area, master bedroom with an en-suite walk-in closet and bathroom (bath tub, sink, bidet, toilet), second bedroom with a built-in hidden bathroom (shower, sink, bidet, toilet), and an entry hall with a balcony facing the courtyard. Built-in wardrobes in the living room and both bedrooms, large windows, recessed lighting, security lock, roller blinds, dishwasher, audio entry phone. Monthly deposit for common building charges CZK 5000/month. Electricity is paid separately.



* Area of the unit according to the Civil Code. The area consists of the sum total area of the entire unit bounded by perimeter walls.