



Apartment Four-bedroom (5+kk)

Sold

260 m², Prague 6, Bubeneč, Eliášova



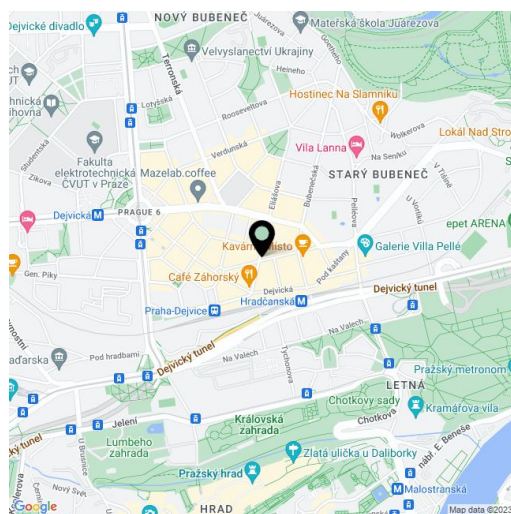


Apartment Four-bedroom (5+kk)

Sold260 m², Prague 6, Bubeneč, Eliášova

Total area	260 m ²
Parking	-
Cellar	-
PENB	G
Reference number	7918

Stylish penthouse apartment with 2 terraces, 4 bedrooms, 3 bathrooms and a sauna in a very quiet part of Prague 6 - Bubeneč, close to Stromovka Park and a number of renowned restaurants, and full amenities. The apartment offers entrance hall with bathroom, large open living room with a terrace, technical room and one bedroom on the lower floor. The upper floor has 3 bedrooms (2 with walk-in closet), 2 bathrooms, sauna and a spacious sunny terrace (12 m²). Interior 242 m², terraces 18 m². Parking space is for rent (for one car).



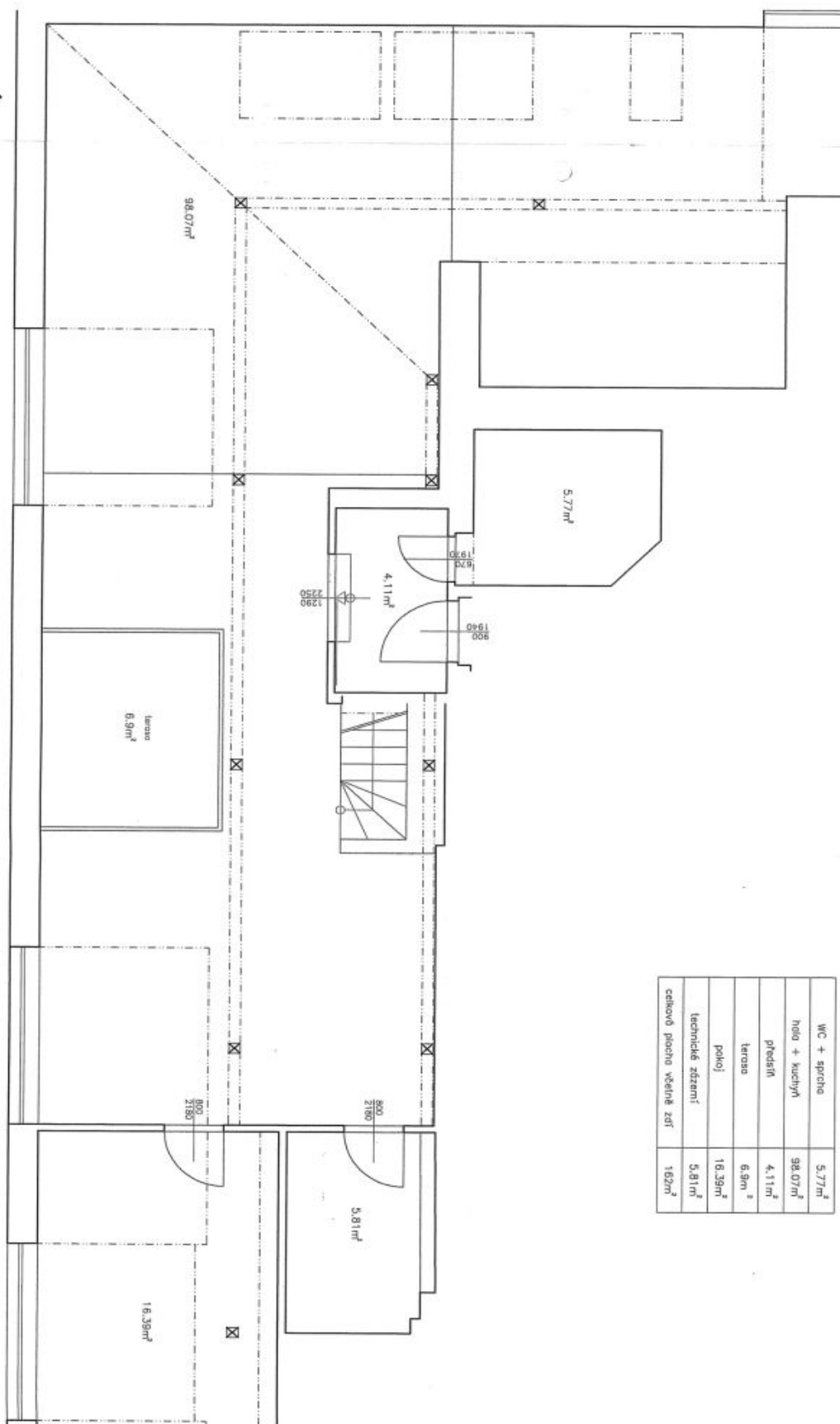
* Area of the unit according to the Civil Code. The area consists of the sum total area of the entire unit bounded by perimeter walls.



Apartment Four-bedroom (5+kk)

260 m², Prague 6, Bubeneč, Eliášova

Sold



WC + spolek	5.77 m ²
hala + kuchyně	98.07 m ²
obedárň	4.11 m ²
terasa	6.9 m ²
pokoj	16.39 m ²
technické zázemí	5.81 m ²
celková plocha včetně zdf	162 m ²



Apartment Four-bedroom (5+kk)

Sold

260 m², Prague 6, Bubeneč, Eliášova

