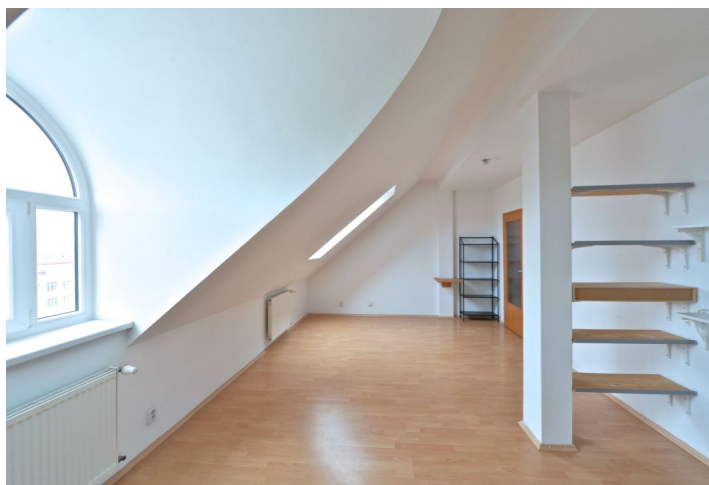




Apartment Three-bedroom (4+kk)

Rented

150 m², Praha 6, Střešovice, Nad Panenskou





Apartment Three-bedroom (4+kk)

Rented

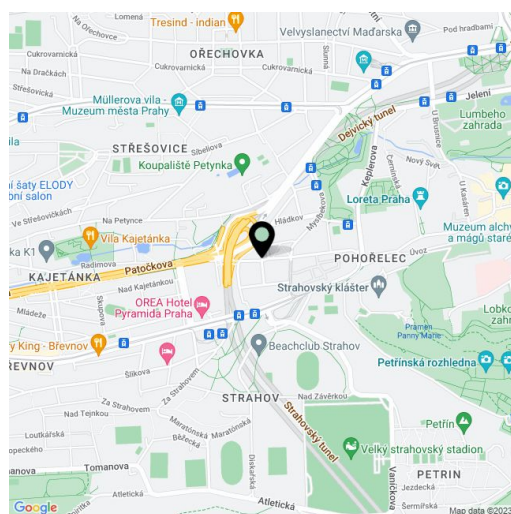
150 m², Praha 6, Střešovice, Nad Panenskou

Total area	150 m ²
Parking	-
Cellar	-
PENB	G
Reference number	8003
Available from	Immediately

Unfurnished 3-bedroom 2-bathroom split-level attic flat with a winter garden situated on the fifth floor of a completely renovated building with a lift. Located within walking distance of the Prague Castle and Petynka swimming pool, near the Ladronka park, with quick connections to metro and the city center.

The lower level includes an open living room with dining area, fully fitted kitchen and access to the winter garden (can be partly opened and used as a terrace), one bedroom with a spacious fitted walk-in closet, bathroom with tub, a guest toilet, and entry hall. Upstairs is an open gallery (can be a study), two bedrooms, and shower bathroom with toilet.

Wood floating and tile floors, built-in storage, independent gas heating, washer, dishwasher, video entry phone, alarm, satellite TV connection, chip operated lift. Common building charges CZK 625/person/month. Gas and electricity is transferred to the tenant.



* Area of the unit according to the Civil Code. The area consists of the sum total area of the entire unit bounded by perimeter walls.