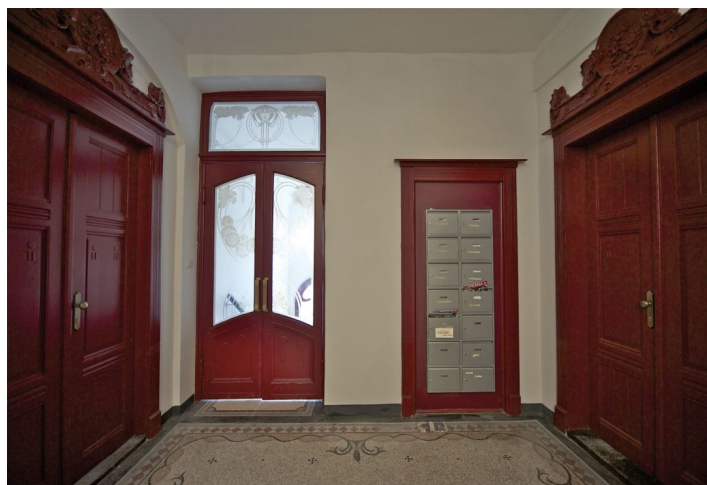




Apartment Two-bedroom (3+1)

Sold

98 m², Prague 1, Nové Město, Masarykovo nabrezi



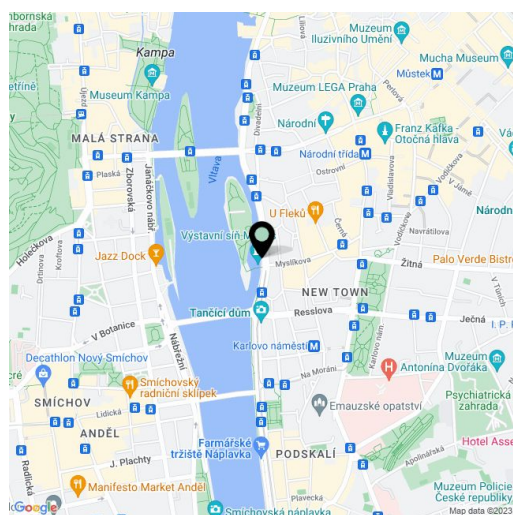


Apartment Two-bedroom (3+1)

Sold98 m², Prague 1, Nové Město, Masarykovo nábřeží

Total area	102 m ²
Floor area*	98 m ²
Balcony	4 m ²
Parking	-
Cellar	-
PENB	G
Reference number	8017

Spacious riverbank apartment on the 1st floor of a completely renovated Art Nouveau apartment building with a new lift located opposite the Slovansky island, a 5 minute walk to the National Theater. The apartment with balcony consists of an entry hall, living room, kitchen, 2 bedrooms, 2 bathrooms and a guest toilet. The living room and bedroom provide panoramic views of the Vltava river, Prague Castle and the Petrin hill. Original features preserved, unique location! Suitable for reconstruction.



* Area of the unit according to the Civil Code. The area consists of the sum total area of the entire unit bounded by perimeter walls.



Apartment Two-bedroom (3+1)

Sold

98 m², Prague 1, Nové Město, Masarykovo nabreží

