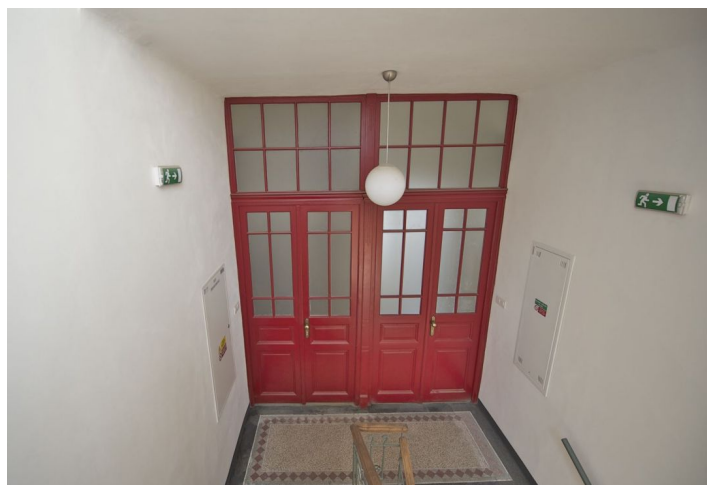
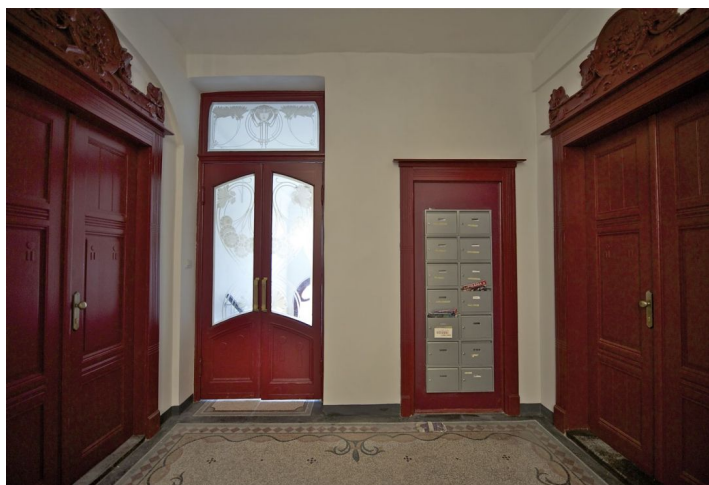




Apartment Two-bedroom (3+kk)

Sold

74 m², Praha 1, Nové Město, Masarykovo nabreží



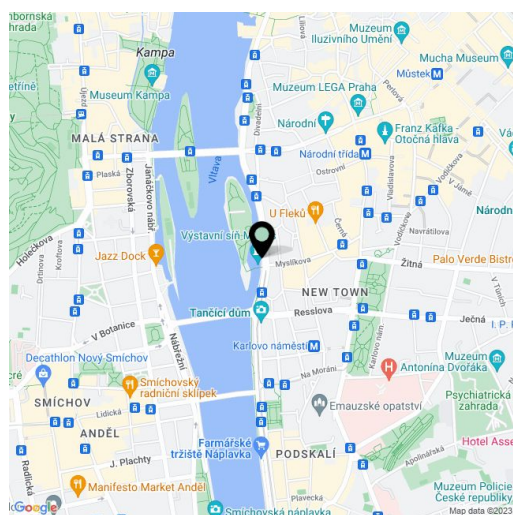


Apartment Two-bedroom (3+kk)

Sold74 m², Praha 1, Nové Město, Masarykovo nabrezi

Total area	78 m ²
Floor area*	74 m ²
Balcony	4 m ²
Parking	-
Cellar	-
PENB	G
Reference number	8018

Bright riverbank apartment on the 1st floor of a completely renovated Art Nouveau apartment building with a new lift located opposite the Slovansky island, a 5 minute walk to the National Theater. The apartment with a balcony consists of an entry hall, living room with open kitchen and balcony access, 2 bedrooms, bathroom. Original features preserved, high ceilings, parquets. Unique location and views. Suitable for reconstruction.



* Area of the unit according to the Civil Code. The area consists of the sum total area of the entire unit bounded by perimeter walls.



Apartment Two-bedroom (3+kk)

Sold

74 m², Praha 1, Nové Město, Masarykovo nabrezi

