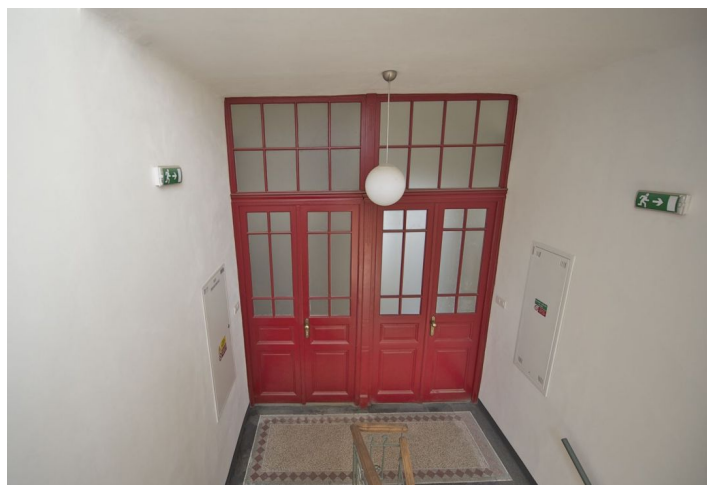
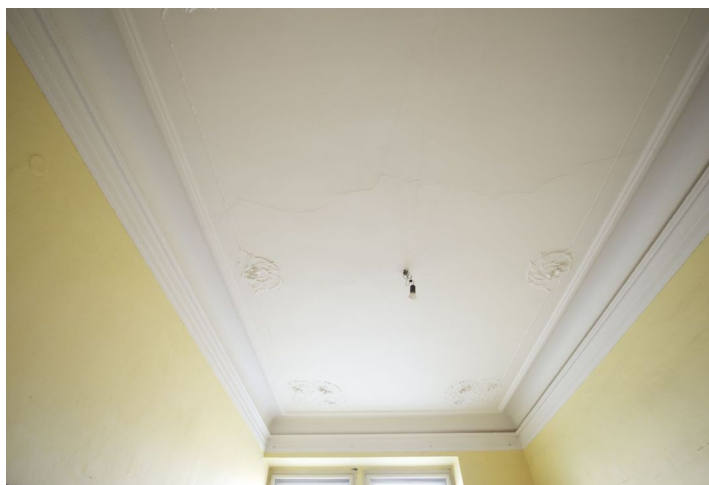




## Apartment One-bedroom (2+kk)

Sold

56 m<sup>2</sup>, Prague 1, Nové Město, Masarykovo nábřeží



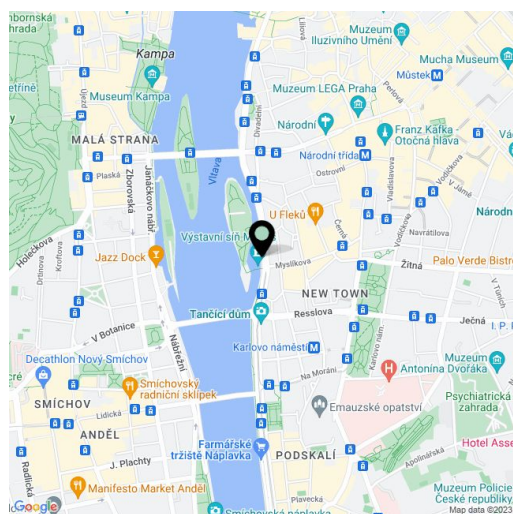


## Apartment One-bedroom (2+kk)

**Sold**56 m<sup>2</sup>, Prague 1, Nové Město, Masarykovo nábřeží

Total area	56 m <sup>2</sup>
Parking	-
Cellar	-
PENB	G
Reference number	8019

Cozy riverbank apartment for sale, on the upper ground floor of a completely renovated Art Nouveau apartment building with a new lift. Located opposite the Slovanský Island, a 5 minute walk to the National Theater. The apartment comprises an entry hall, living area with an open kitchen, bedroom, and bathroom. High ceilings, original windows, double interior doors, original features preserved. Unique location. Suitable for reconstruction.



\* Area of the unit according to the Civil Code. The area consists of the sum total area of the entire unit bounded by perimeter walls.



## Apartment One-bedroom (2+kk)

Sold

56 m<sup>2</sup>, Prague 1, Nové Město, Masarykovo nábřeží

