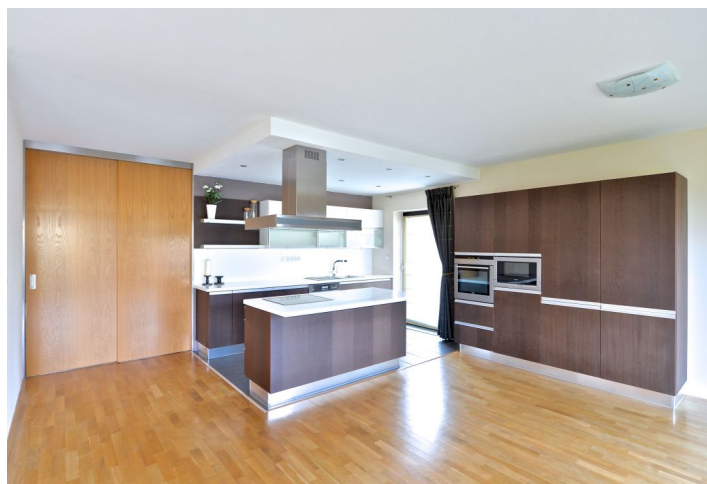




## Apartment Three-bedroom (4+kk)

Rented

120 m<sup>2</sup>, Prague 6, Vokovice, Nobelova





## Apartment Three-bedroom (4+kk)

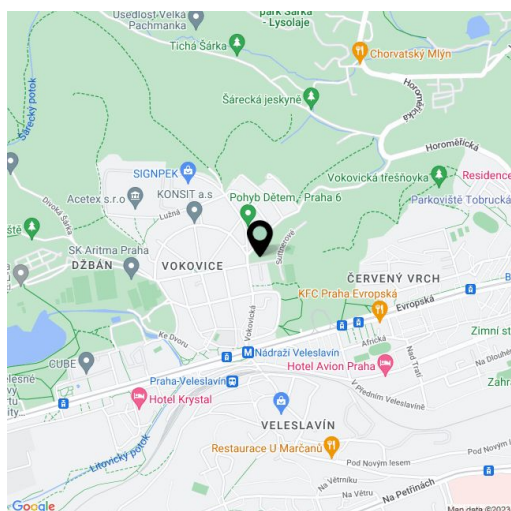
**Rented**120 m<sup>2</sup>, Prague 6, Vokovice, Nobelova

Total area	126 m <sup>2</sup>
Floor area*	120 m <sup>2</sup>
Balcony	6 m <sup>2</sup>
Parking	Garage parking.
Garage	Yes
Cellar	Yes
PENB	G
Reference number	8064
Available from	Immediately

**Modern 3-bedroom 2-bathroom flat with a 6 m<sup>2</sup> balcony on the first floor in the recently built development Na Krutci, designed by Kuba & Pilař architekti, with 24-hour reception and security, sports center and tennis court. Convenient to the airport and international schools in Prague 6, with quick connections to the city center, close to Šárka protected natural preserve. Full civic amenities in the area, five min. to the tram stop and a future metro station.**

The interior includes master bedroom with a shower bathroom with toilet, two more bedrooms, living room with a fully fitted open kitchen and balcony access, full bathroom, guest toilet with utility area, and entry hall.

Wooden floors, tiles, French windows, security entry door, dishwasher, microwave oven, video entry phone, basement storage unit, lift. One garage space with storage included. Common building charges CZK 6.400 per month. Gas and electricity are billed separately.



\* Area of the unit according to the Civil Code. The area consists of the sum total area of the entire unit bounded by perimeter walls.