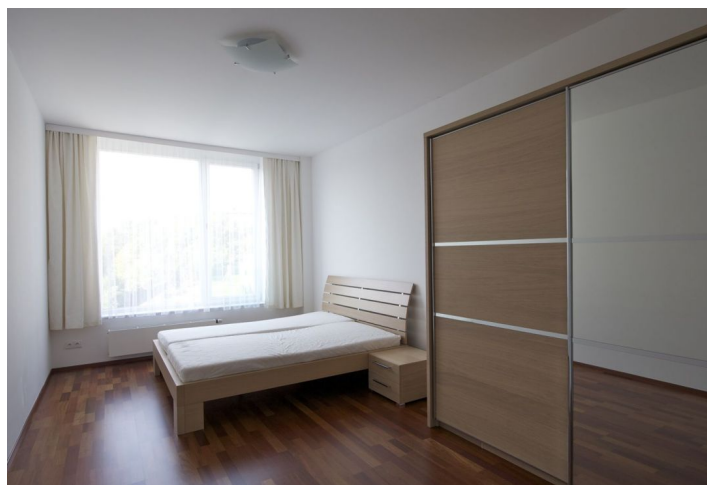
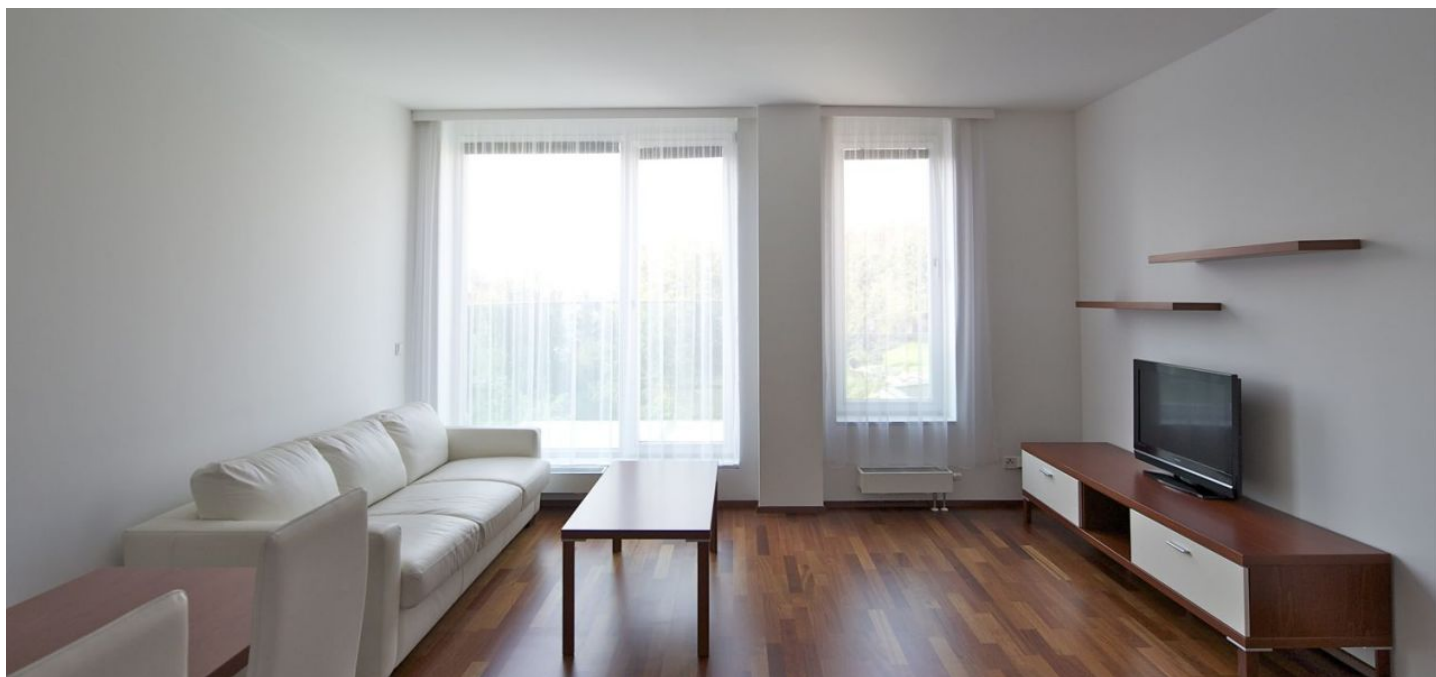




Apartment One-bedroom (2+kk)

Rented

65 m², Prague 5, Smíchov, Švédská





Apartment One-bedroom (2+kk)

Rented

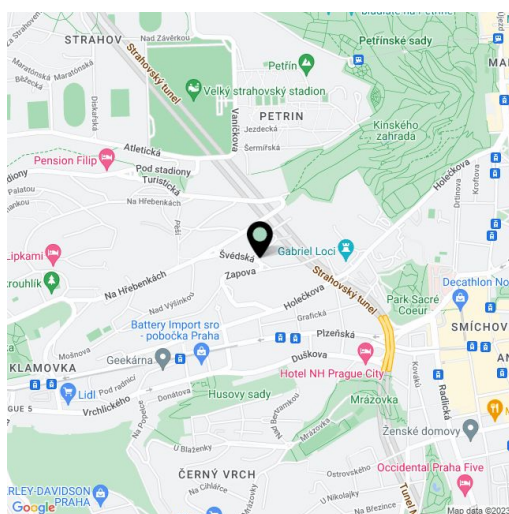
65 m², Prague 5, Smíchov, Švédská

Total area	65 m ²
Parking	-
Cellar	Yes
PENB	G
Reference number	8083
Available from	Immediately

Bright furnished 1-bedroom flat with a balcony and green views on the 3rd floor of the modern project Sacre Coeur Residence with 24-hour reception, lifts, private courtyard garden with a playground, and camera surveillance system. Located in a sought after residential area in Prague 5, in the vicinity of Kinského Garden, the Petřín hill and the Nový Smíchov shopping and entertainment center. Quiet area with bus connections, 5 minutes to Újezd trams or Anděl metro. Convenient to the French School.

The apartment consists of living room with a fully fitted open kitchen and **balcony** access, one bedroom, bathroom with bath tub, separate toilet, laundry/storage room, and entry hall.

Other features include **wood floors** and tiles, security door, southwest facing French windows, washer, dishwasher, microwave, 3.9 m² basement storage unit. Monthly deposit for common building charges CZK 4,000 per month. Available from May 2022.



* Area of the unit according to the Civil Code. The area consists of the sum total area of the entire unit bounded by perimeter walls.