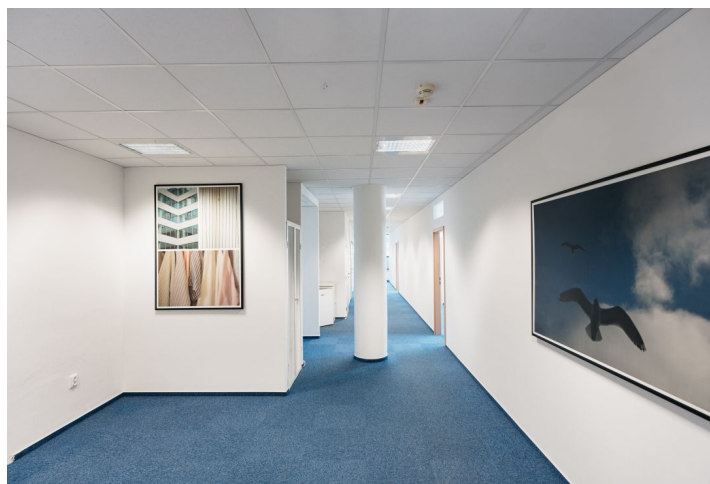




Office space

Rented

Prague 1, Nové Město, Na Poříčí



**Office space****Rented**

Prague 1, Nové Město, Na Poříčí

Service price	175 CZK monthly per m ²
Available area	164 m ²
Cellar	-
Terrace	50 m ²
Parking	EUR 200 / ps / month
PENB	C
Reference number	8206

Office space for lease on the 6th floor in a historically and architecturally valuable complex of buildings in the center of Prague. Space is divided into 4 offices and open space. The space has a social background and terrace (50 sq. m.).

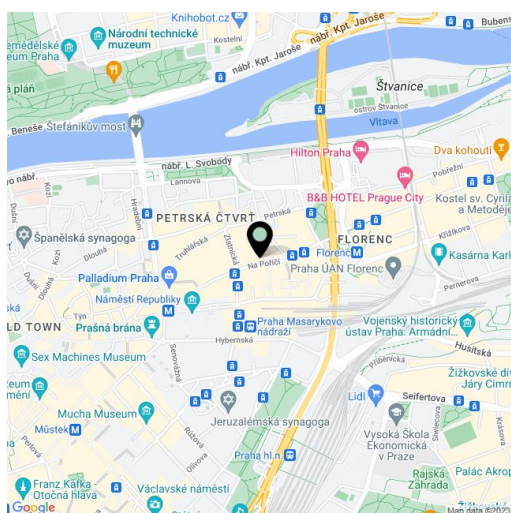
Location:

Perfect accessibility by public transportation, by car and train and well developed infrastructure. There is a tram stop close to the building, while the Florenc metro and central bus station (line B, C), and the Masaryk railway station are in close vicinity.

Features and Services:

- Raised floor in the offices
- Comfort cooling
- Suspended acoustic ceiling with integrated lighting
- New light distribution in the ceilings
- Magnetic card access system
- 24-hour security service
- Reception desk

Rental and service charges listed without VAT. Lessee pays no commission.





Office space

Prague 1, Nové Město, Na Pořící

Rented

