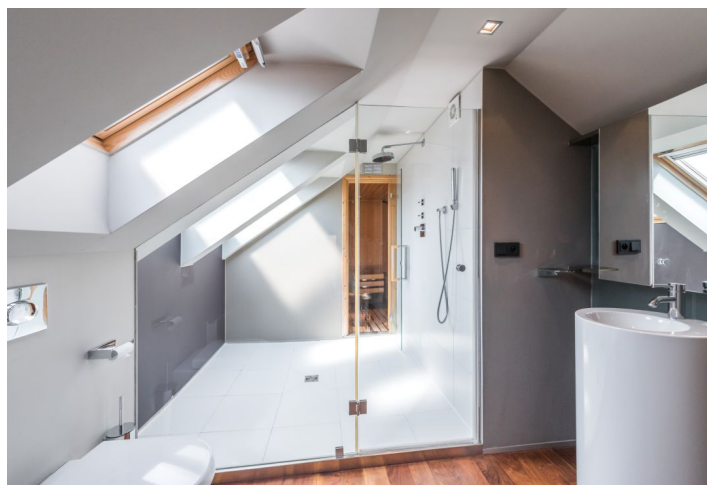
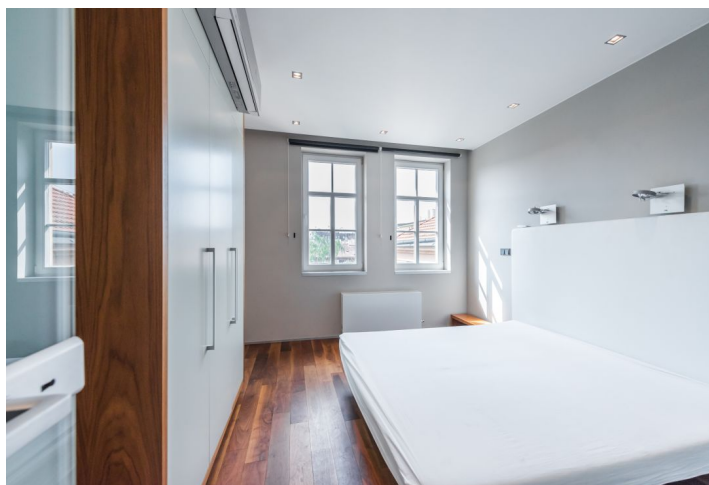




Apartment Five-bedroom (6+kk)

Rented

223 m², Prague 1, Nové Město, Ve Smečkách





Apartment Five-bedroom (6+kk)

Rented

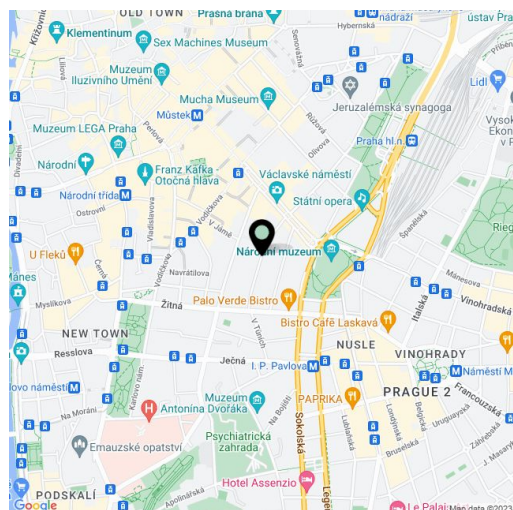
223 m², Prague 1, Nové Město, Ve Smečkách

Total area	235 m ²
Floor area*	223 m ²
Terrace	12 m ²
Parking	-
Cellar	Yes
PENB	G
Reference number	8226
Available from	Immediately

This is a high quality, furnished 5-bedroom 3-bathroom split-level attic apartment with a sauna and a terrace offering views of the Prague Castle and the Petřín Hill. Boasting a tastefully designed interior by Donlic, the apartment is situated on the 5th floor of a partly renovated traditional building without a lift. Attractively located just a minute walk from Wenceslas Square with immediate access to all three Prague metro lines and full amenities within easy reach.

The lower level features a living room with a fully fitted open plan kitchen and a dining area, three bedrooms, an office, a comfortable full en-suite bathroom, a shower room with a toilet, a fitted **walk-in closet**, and an entrance hall. The upper level includes a gallery with terrace access, one bedroom, a shower room with a toilet, and a **sauna**.

Air-conditioning, hardwood floors, tiles, plenty of **built-in wardrobes and storage**, security entry door, master switch, blinds, gas boiler, washer, dryer, dishwasher, microwave oven, TV, alarm, **cellar**. Service charges and water bills: CZK 1000/person/month. Gas and electricity are billed separately (transfer to the tenant).



* Area of the unit according to the Civil Code. The area consists of the sum total area of the entire unit bounded by perimeter walls.



Apartment Five-bedroom (6+kk)

Rented

223 m², Prague 1, Nové Město, Ve Smečkách

