



Apartment Three-bedroom (4+kk)

Rented

154 m², Prague 1, Nové Město, Vojtěšská





Apartment Three-bedroom (4+kk)

Rented

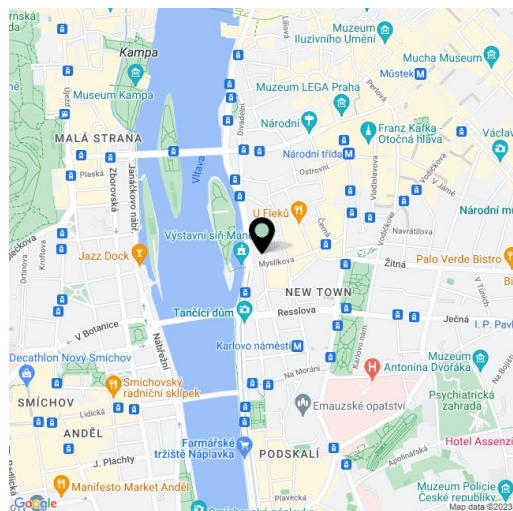
154 m², Prague 1, Nové Město, Vojtešská

Total area	168 m ²
Floor area*	154 m ²
Terrace	14 m ²
Parking	-
Cellar	-
PENB	G
Reference number	8261
Available from	Immediately

Completely renovated furnished 3-4-bedroom split-level attic flat with a 14 m² terrace on the 5th floor with lift in a partly restored 1920's building. Centrally located moments from the Vltava riverbank and the National Theater, with full amenities in the immediate neighborhood.

The lower level includes an open living room, a small open plan kitchenette, three bedrooms, one with a study/walk-in closet, toilet with sink, and entry hall with built-in wardrobes. The upper level features one bedroom with a partially glass wall and access to the terrace overlooking the surrounding historic rooftops and spires, and shower bathroom with sink and toilet.

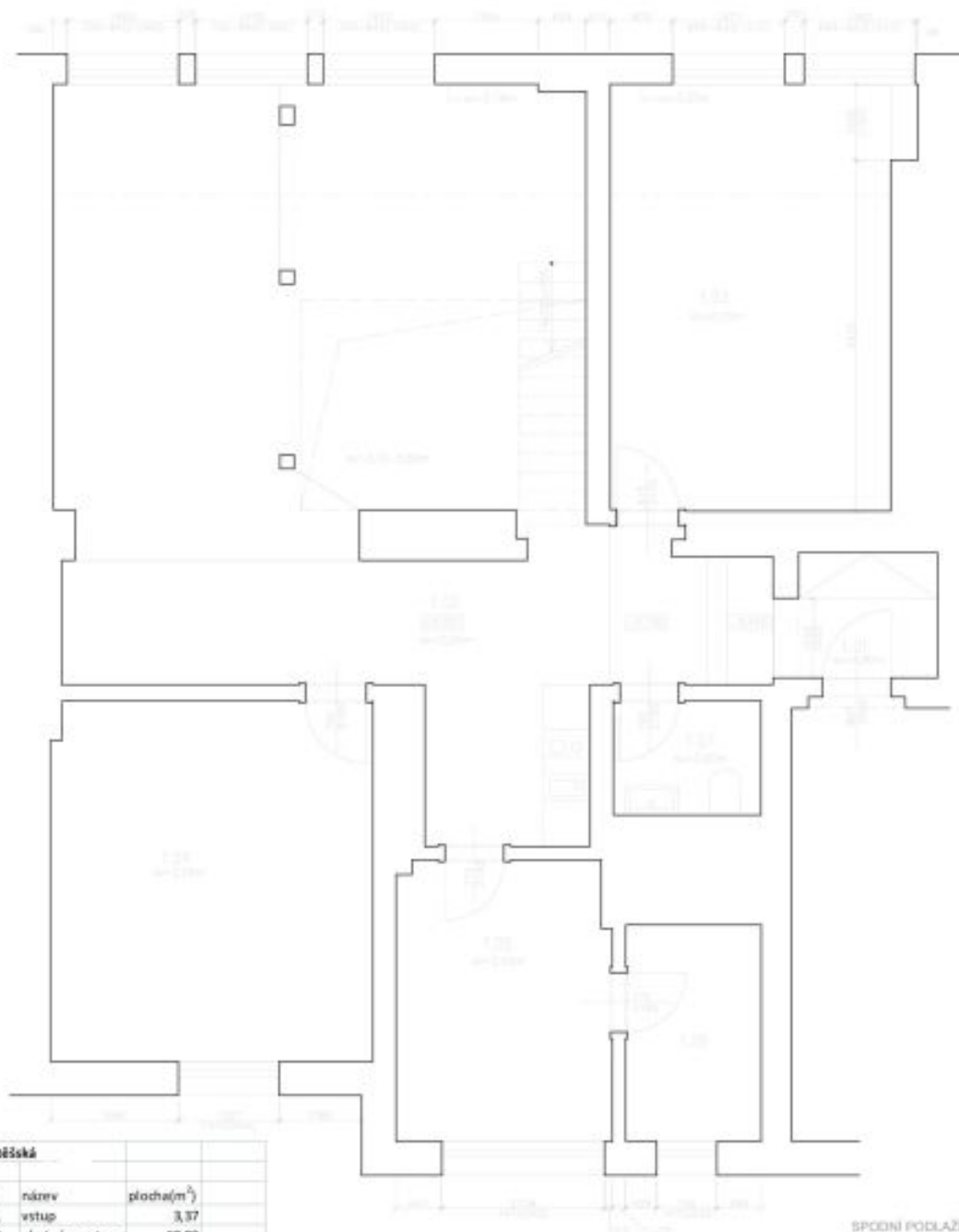
Air-conditioning, wood floors, security door, Miele appliances incl. dishwasher, microwave and coffee maker, rain shower head, video entry phone, satellite TV connection, alarm. Common building charges CZK 1000/person/month. Utilities are billed separately.



* Area of the unit according to the Civil Code. The area consists of the sum total area of the entire unit bounded by perimeter walls.



Apartment Three-bedroom (4+kk)

Rented154 m², Prague 1, Nové Město, Vojtěšská

Vojtěšská		
kod	název	plocha(m ²)
1.01	vstup	3,37
1.02	obytný prostor	62,82
1.03	pokoj	21,12
1.04	pokoj	20,09
1.05	pokoj	10,39
1.06	šatna	5,09
1.07	toaleta	2,92
1.08	chodba	5,12
1.09	pokoj	18,24
1.10	koupelna	3,21
suma		152,37 m²
terasy a balkony		
1.11	terasa	14,12 m ²



Apartment Three-bedroom (4+kk)

Rented

154 m², Prague 1, Nové Město, Vojtěšská

Vejštitelka		
kód	název	plocha(m ²)
1.01	vestav	3,37
1.02	obytňý prostor	62,82
1.03	pokoj	21,12
1.04	pokoj	20,09
1.05	pokoj	19,39



HOŘNÍ PODLAŽÍ