



Apartment Two-bedroom (3+kk)

Rented

145 m², Praha 1, Nové Město, Opatovická





Apartment Two-bedroom (3+kk)

Rented

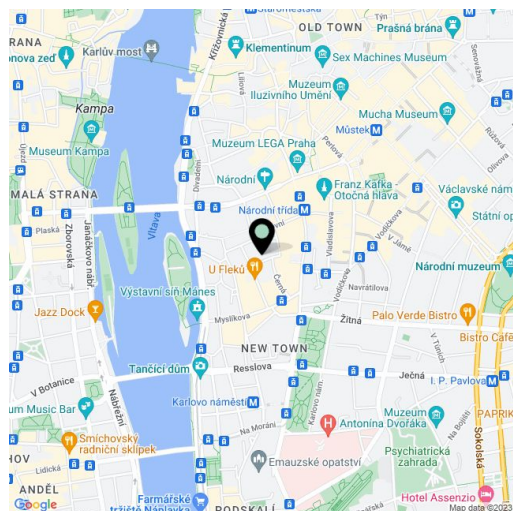
145 m², Praha 1, Nové Město, Opatovická

Total area	145 m ²
Parking	-
Cellar	-
PENB	G
Reference number	8263
Available from	Immediately

Completely reconstructed furnished 2-bedroom 2-bathroom split-level attic flat on the fourth floor of a reconstructed building with a new lift right in the Prague city center. Quiet location moments from the Vltava embankment and the National Theatre, with tram and metro connections (Národní třída).

The lower level includes a bright living room with a fully fitted open kitchen, shower bathroom with sink and toilet, and entry hall with built-in wardrobes. Upstairs is an open gallery with built-in wardrobes, two bedrooms, and a sunny en-suite bathroom with a free standing bath tub, double sink and toilet.

Air-conditioning, solid wood parquet floors, security entry door, washer, dryer, Miele appliances incl. dishwasher and microwave oven, TV, video entry phone, alarm, shared courtyard terrace accessible from the fourth floor corridor. Common building charges CZK 1,000/person/month. Utilities are billed separately.



* Area of the unit according to the Civil Code. The area consists of the sum total area of the entire unit bounded by perimeter walls.

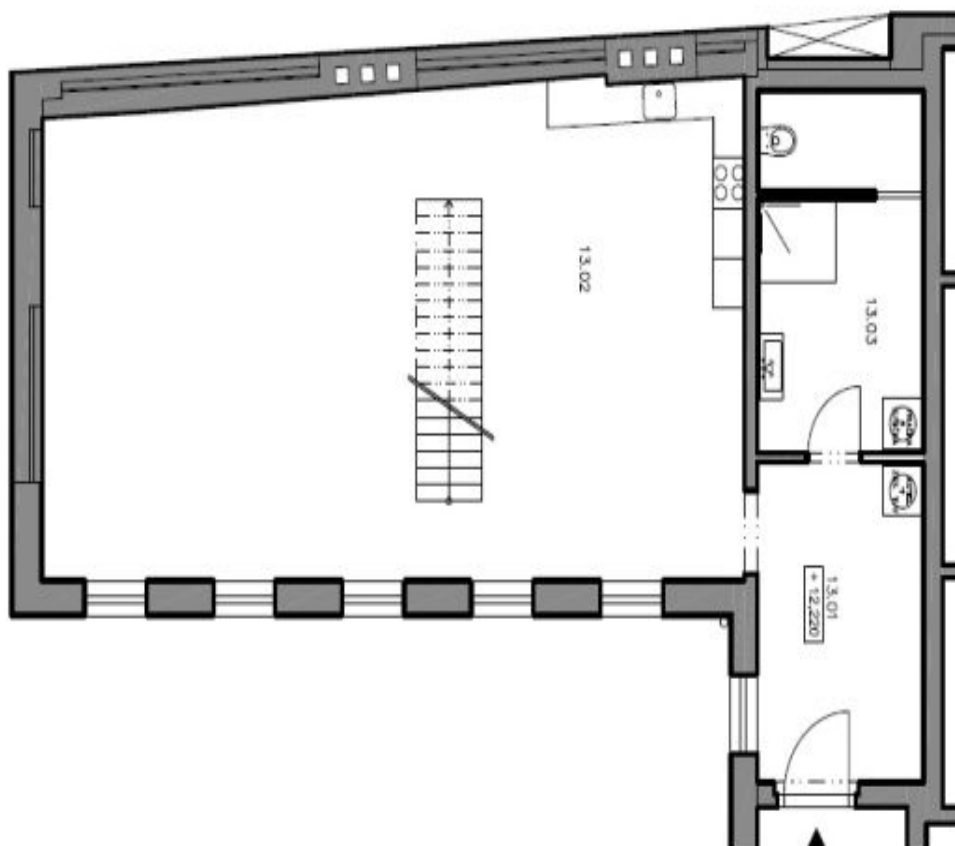


Apartment Two-bedroom (3+kk)

145 m², Praha 1, Nové Město, Opatovická

Rented

4.NP



5.NP

