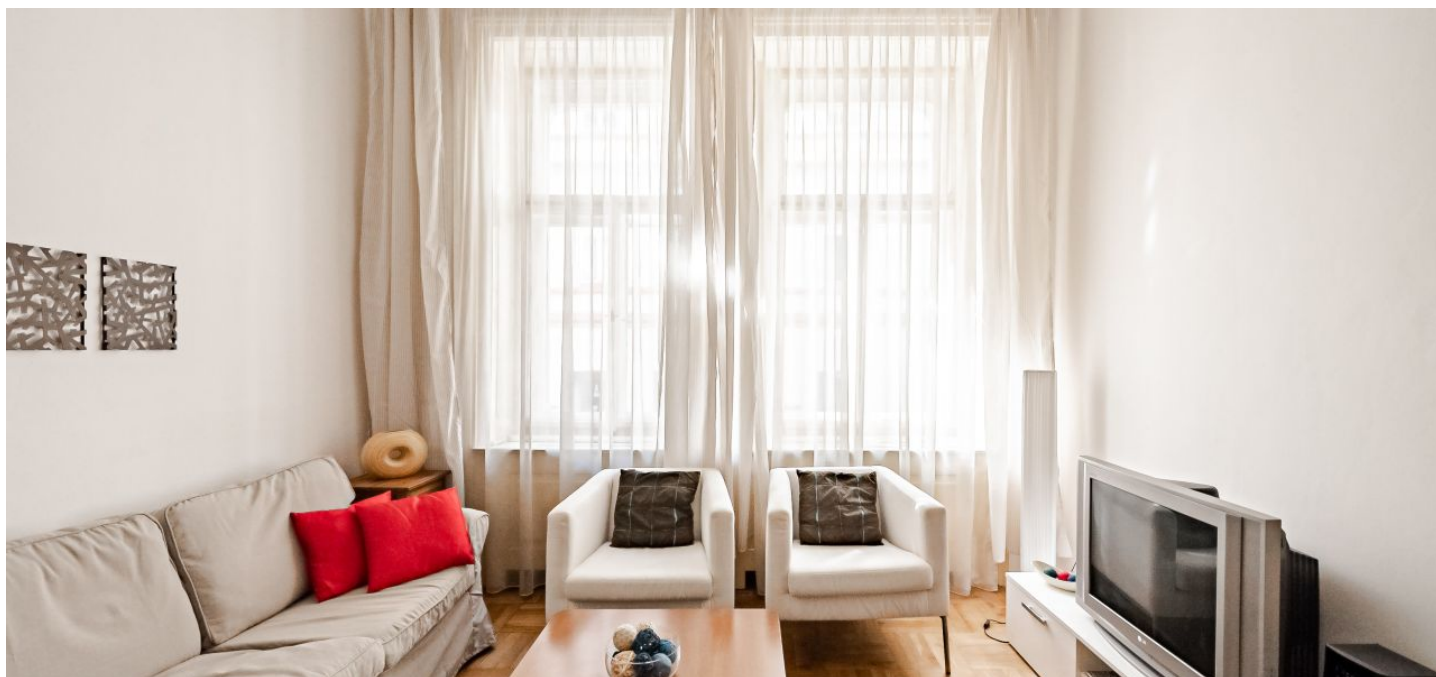




## Apartment One-bedroom (2+kk)

€ 950 | CZK 24 000

50 m<sup>2</sup>, Prague 1, Josefov, Maiselova





## Apartment One-bedroom (2+kk)

€ 950 | CZK 24 000

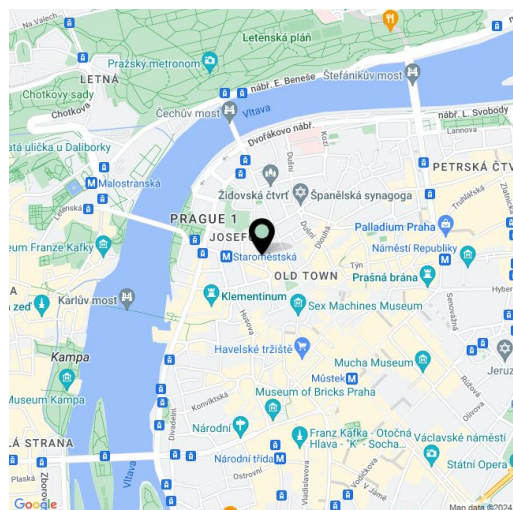
50 m<sup>2</sup>, Prague 1, Josefov, Maiselova

Total area	50 m <sup>2</sup>
Parking	-
Cellar	-
Service price	Common building charges, water, and internet CZK 2,000. Electricity and gas are billed separately - transferred to the tenant.
PENB	Not required
Reference number	8328
Available from	Immediately

This furnished renovated apartment with preserved original features is situated on the 1st floor of a lovely Art Nouveau building with an elevator, in the heart of the former Jewish Quarter (Josefov) and in the vicinity of majestic Pařížská Street and Miloš Forman Square. A very accessible location with a rich cultural life and a wide selection of restaurants and cafes. There are also good civic amenities nearby, and the Rudolfinum and the Faculty of Arts of the Charles University are also close-by.

The apartment consists of a living room with a fully fitted open plan kitchen and dining area, one bedroom with built-in wardrobes, a shower bathroom, a separate toilet, and an entrance hall with a built-in utility closet.

Parquet and tile floors, stucco ornaments, large windows, independent gas heating, washer, dishwasher, satellite connection.



\* Size of the unit according to the Housing Act.  
The area consists of the sum total of the internal area of every room.