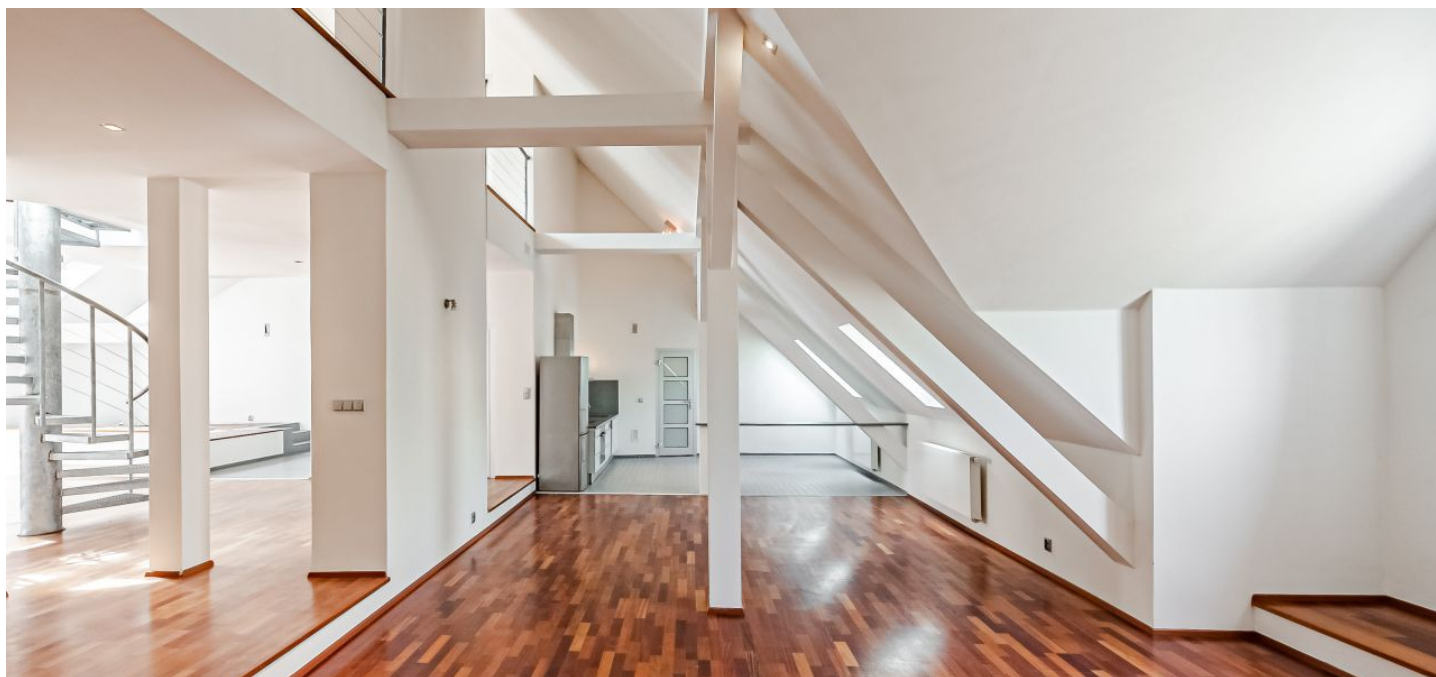




## Apartment One-bedroom (2+kk)

Rented

215 m<sup>2</sup>, Prague 1, Staré Město, Valentinská





## Apartment One-bedroom (2+kk)

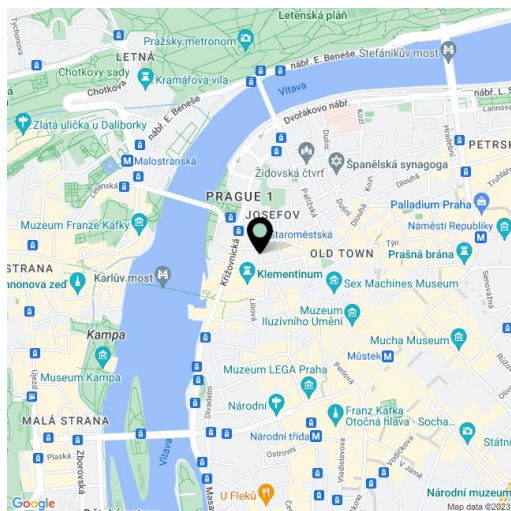
**Rented**215 m<sup>2</sup>, Prague 1, Staré Město, Valentinská

Total area	238 m <sup>2</sup>
Floor area*	215 m <sup>2</sup>
Terrace	23 m <sup>2</sup>
Parking	-
Cellar	-
PENB	G
Reference number	8420
Available from	Immediately

This unfurnished 1-bedroom attic apartment for rent with a terrace is on the 4th floor of a nicely renovated corner Art Nouveau building with a new elevator. Ideally located in the very center of Old Town, a few steps to the Vltava riverbank and a few more to Old Town Square, with instant tram and metro connections. Full amenities and quality restaurants in the immediate vicinity.

The interior features a spacious entrance hall, a fully fitted kitchen with a dining area, a living room, a bedroom, 2 bathrooms (one with a tub, the second with a shower), a guest toilet, and a utility room.

Parquet and tile floors, security entry door, built-in wardrobes, dishwasher, American type fridge with an ice maker, wine fridge, central switch, alarm, audio entry phone. Common building charges CZK 1,000/per person/month. Utilities are billed separately.



\* Area of the unit according to the Civil Code. The area consists of the sum total area of the entire unit bounded by perimeter walls.