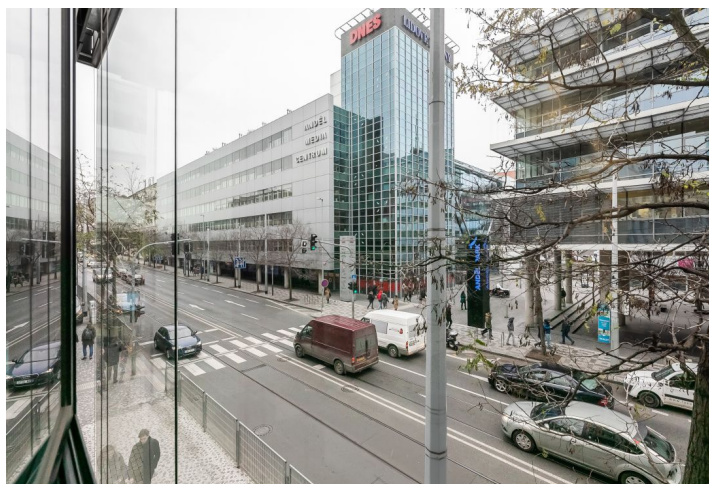




Office building

Prague 5, Smíchov, Karla Engliše

Rented



**Office building**

Prague 5, Smíchov, Karla Engliše

Rented

Service price	150 CZK monthly per m ²
Total building area	2 566 m ²
Tenant consumption	—
Parking	130 EUR
Parking service charges	—
Parking ratio	—
Certification	—
PENB	C
Reference number	8518

Modern seven-storey office building offers office space for lease in the prestigious Prague locality of Smichov. Reception, 3 elevators and parking in underground garages. In addition, the building has a special noise-proof facade - the tenants will have a quiet and sophisticated working environment. Possibility of dividing the spaces with its own entrance, kitchen and sanitary facilities.

Location:

The building is very easily accessible by car and public transport – the Anděl metro station (line B), tram and bus stops are within walking distance. Easy connection by car via the inner city circuit. The area boasts the Nový Smíchov shopping / entertainment center and all amenities.

Features and services:

Representative reception area
 24/7 access
 Security service + CCTV cameras
 Modern elevators
 Air-conditioning
 Raised floors
 Magnetic card access
 Openable windows
 Possibility of ISDN connection
 Underground parking spaces

Rental and service charges are listed without VAT. Lessee pays no commission.



Office building

Prague 5, Smíchov, Karla Engliše

Rented



