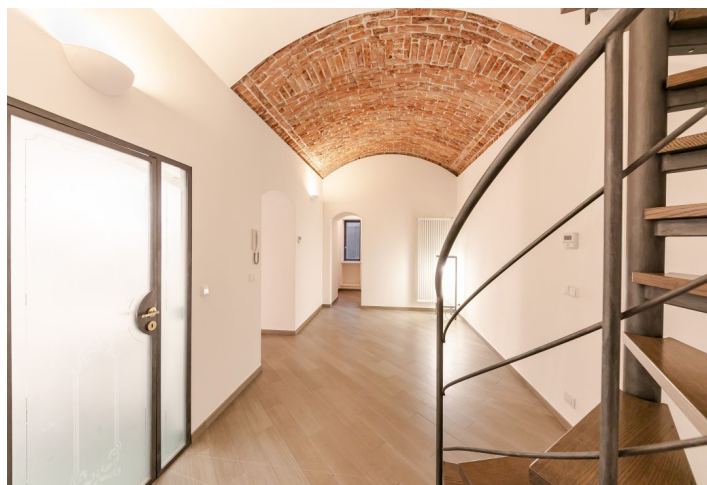
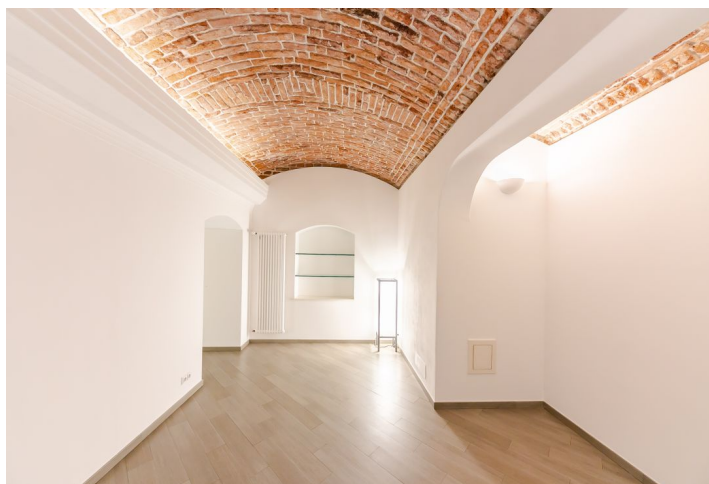




Apartment Three-bedroom (4+1)

Rented

134 m², Prague 5, Smíchov, Hořejší nábřeží





Apartment Three-bedroom (4+1)

Rented

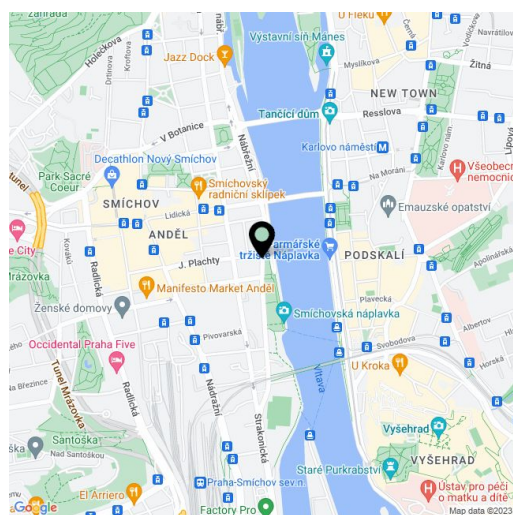
134 m², Prague 5, Smíchov, Hořejší nábřeží

Total area	134 m ²
Garden	29 m ²
Parking	-
Cellar	-
PENB	G
Reference number	8575
Available from	Immediately

Reconstructed unfurnished atypical 3-bedroom 3-bathroom split-level flat with a terrace and garden (29 m²) and views of the river and Emauzy Monastery. Situated on the ground and lower ground floor of a completely renovated Art-nouveau building with a lift on the Vltava riverbank, just a short walk from the Nový Smíchov shopping mall and Anděl metro station.

The ground floor features three bedrooms, one with a fitted walk-in closet and access to the terrace, two with an en-suite bathroom (tub / shower, sink, bidet and toilet), boiler room, and a large entry hall. There is a narrow circular staircase leading to the lower ground floor incl. living room with garden access, a spacious dining room / hall, a fully fitted kitchen, and a shower bathroom (sink, bidet, toilet).

Vaulted ceilings, tile floors throughout, built-in storage, ventilation, security bars on windows, washer / dryer, dishwasher, gas boiler, audio entry phone. Common building charges CZK 4,000/month. Gas and electricity are billed separately.



* Area of the unit according to the Civil Code. The area consists of the sum total area of the entire unit bounded by perimeter walls.