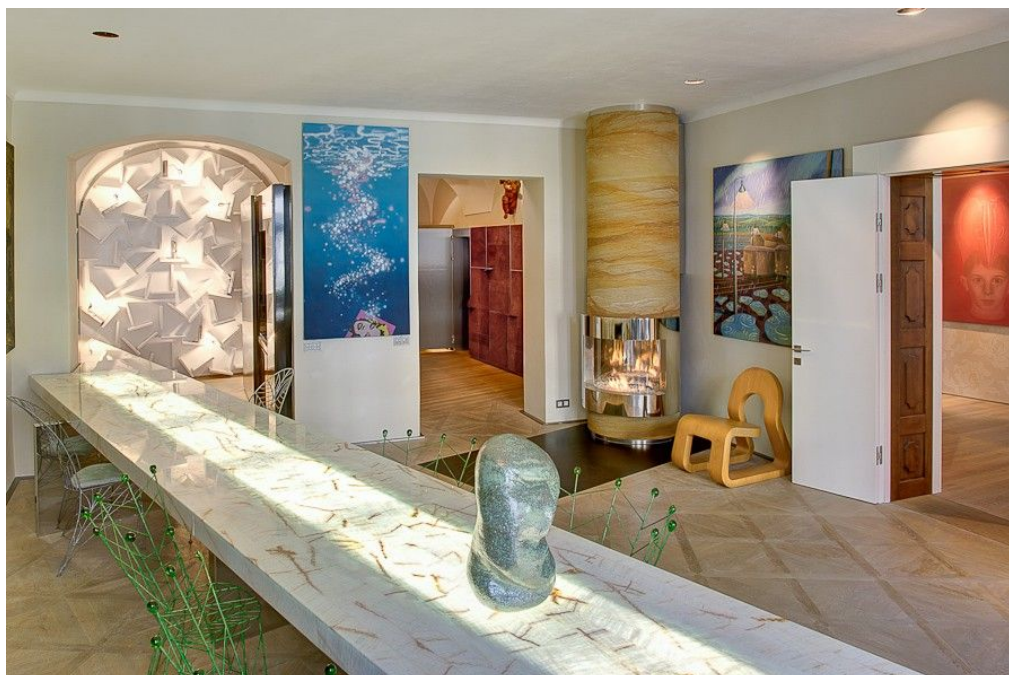




Apartment Two-bedroom (3+1)

Ask for price

290 m², Prague 1, Malá Strana, Mostecká





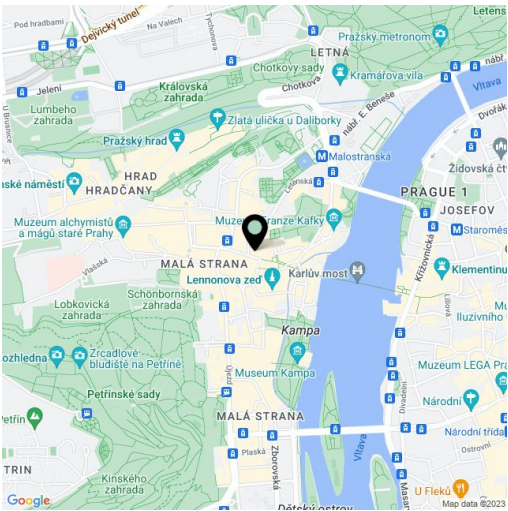
Apartment Two-bedroom (3+1)

Ask for price

290 m², Prague 1, Malá Strana, Mostecká

Total area	290 m²
Parking	-
Cellar	-
PENB	G
Reference number	8663
Available from	Immediately

Exclusive apartment in an exclusive location, a unique rental opportunity for the most discriminating clients. This stylish 2-bedroom 2-bathroom apartment with a 65 m² terrace was designed by the renown Czech architect Barbora Škorpilová, featuring a fresh combination of elegant original design, extraordinary details and luxurious materials. Located in a vibrant area in the picturesque Malá Strana neighborhood, within walking distance of such historic sights as the Prague Castle, Charles Bridge and the Old Town Square, yet very private and quiet. The interior includes a large living room with a study area and a small kitchenette, fully fitted kitchen with pantry, dining room with access to the terrace, winter garden, "in-between room", and two bedrooms with en-suite bathrooms and built-in wardrobes. The apartment comes fully furnished including original paintings and artwork. Wood floors, built-in storage, gas boiler, video entry phone. First floor with no lift in a fully refurbished historic building with meticulously preserved original features. Common building charges CZK 412/person/month. Utilities are billed separately based on consumption.



* Area of the unit according to the Civil Code. The area consists of the sum total area of the entire unit bounded by perimeter walls.



Apartment Two-bedroom (3+1)

290 m², Prague 1, Malá Strana, Mostecká

Ask for price

