



Apartment Two-bedroom (3+kk)

Sold

106 m², Prague 6, Dejvice, Kolejní



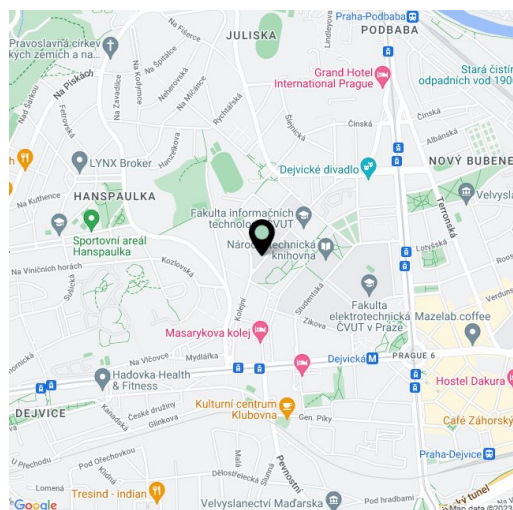


Apartment Two-bedroom (3+kk)

Sold106 m², Prague 6, Dejvice, Kolejní

| | |
|-------------------------|--------------------|
| Total area | 139 m ² |
| Floor area* | 106 m ² |
| Terrace | 33 m ² |
| Parking | Yes |
| Garage | Yes |
| Cellar | Yes |
| PENB | G |
| Reference number | 8728 |

Top standard 2-bedroom 2-bathroom penthouse with roof terrace situated in newly built residential complex, with easy access to the city center. This design split-level flat offers air-conditioned living room with dining area and fully fitted open kitchen, guest toilet, and entry hall with walk-in closet. The second (private) floor features 2 bedrooms (the one has balcony access, the another has terrace access), 2 bathrooms. Hardwood flooring, custom-made furniture, Siemens kitchen appliances, design bathroom fixtures / fittings, floor heating, electric blinds, alarm. 5 minute walk to Dejvická metro station, close to ČVUT university campus, within easy reach of all public amenities. The purchase price is listed including 2 garage parking spaces and cellar. Interior 107 m², terraces/balcony 32 m².



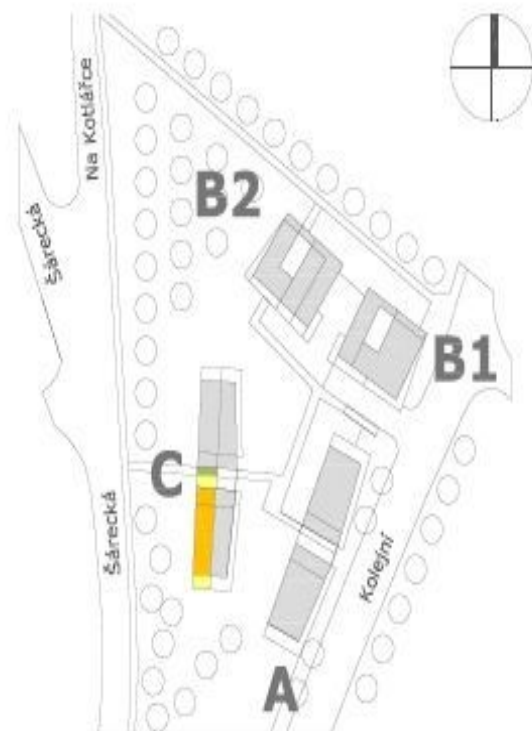
* Area of the unit according to the Civil Code. The area consists of the sum total area of the entire unit bounded by perimeter walls.



Apartment Two-bedroom (3+kk)

106 m², Prague 6, Dejvice, Kolejní

Sold



BYT C 07

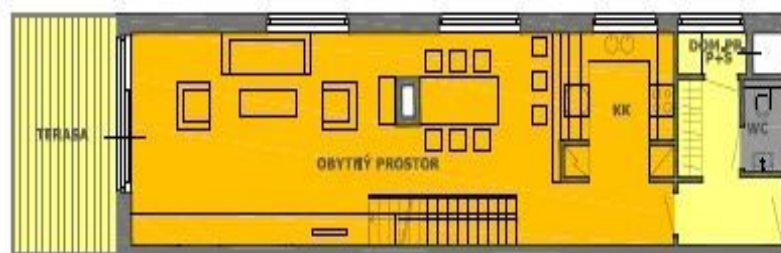
(MEZONET)

| | |
|--------------|----------------------|
| 3+kk | 107,46m ² |
| TERASY | 22,70m ² |
| ZEL. STŘECHA | 8,39m ² |
| BALKON | 2,24m ² |

| MÍSTNOST | m ² |
|---------------------------|----------------|
| OBYTÝ PROSTOR | 53,38 |
| DOMÁCÍ PRÁCE | 1,43 |
| PŘEDSÍŇ | 5,36 |
| WC | 1,41 |
| POKŮJ 1 | 16,21 |
| POKŮJ 2 | 14,64 |
| HALA | 5,87 |
| KOUPELNA 1 | 4,61 |
| KOUPELNA 2 | 4,55 |
| PLOCHA BYTU CELKEM | 107,46 |
| TERASY | 22,70 |
| ZEL. STŘECHA | 8,39 |
| BALKON | 2,24 |

4.NP

0 1 2 3 4 5 m



5.NP

