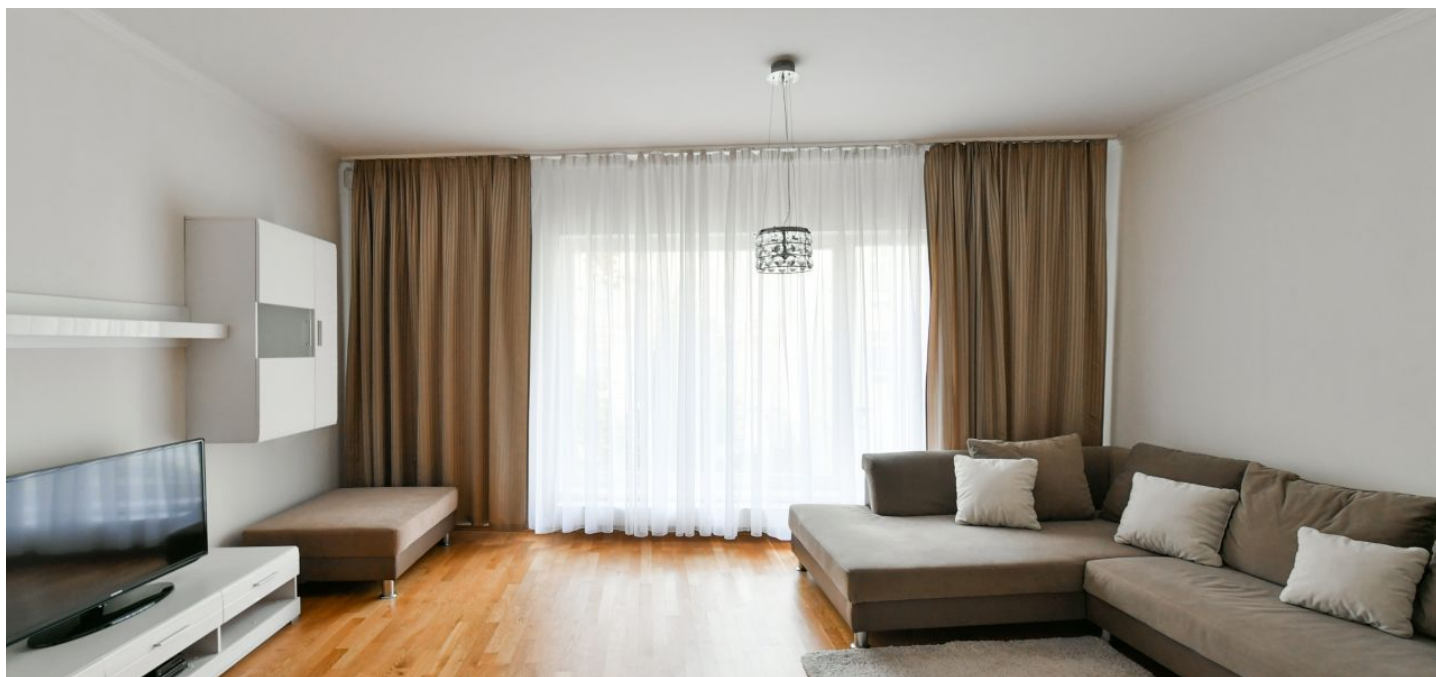




Apartment One-bedroom (2+kk)

Rented

82 m², Praha 1, Nové Město, Senovážné náměstí





Apartment One-bedroom (2+kk)

Rented

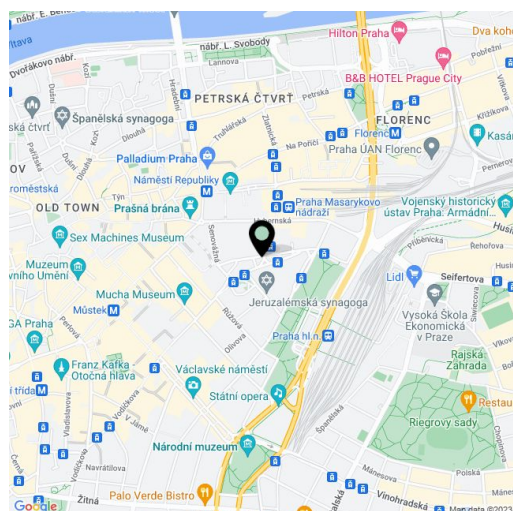
82 m², Praha 1, Nové Město, Senovážné náměstí

Total area	105 m ²
Floor area*	82 m ²
Terrace	23 m ²
Parking	Parking space included.
Garage	Yes
Cellar	Yes
PENB	G
Reference number	8729
Available from	Immediately

Comfortable furnished air-conditioned 1-bedroom flat with an 23 m² terrace facing the courtyard, on the 1st floor of a completely restored 19th-century Neo-Classicist palace with a lift, reception, 24-hour security, CCTV and parking, just a ten minute walk from the Old Town Square and three minutes from Wenceslas Square.

The interior features a spacious living room with a floor-to-ceiling window providing views of the green courtyard garden, a fully equipped open kitchen with access to the terrace with an automatic retractable awning, one bedroom with an en-suite bathroom (bath tub, shower, sink, bidet, toilet) and terrace access, guest toilet, and an entry hall.

Wood floors, security door, video entry phone, alarm, washer, dishwasher, American type fridge. Storage space in the basement available. Common building charges approx. CZK 6,000/month. Energies are billed separately.



* Area of the unit according to the Civil Code. The area consists of the sum total area of the entire unit bounded by perimeter walls.