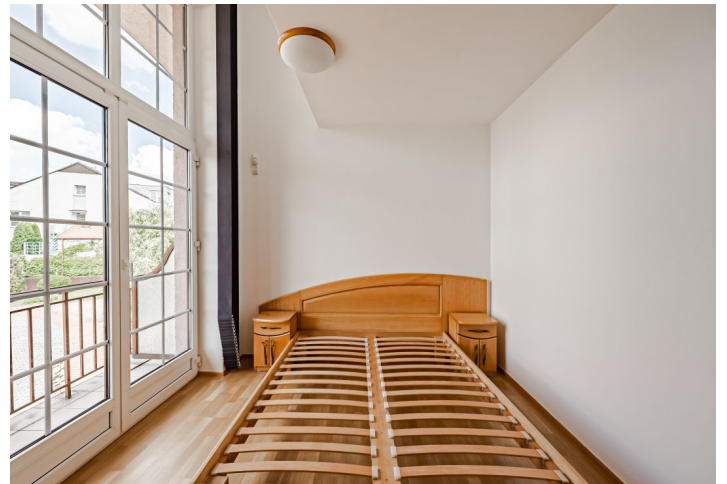




## House Four-bedroom (5+1)

Rented

279 m<sup>2</sup>, Praha-západ, Průhonice, Ke Školce





## House Four-bedroom (5+1)

**Rented**279 m<sup>2</sup>, Praha-západ, Průhonice, Ke Školce

Total area	279 m <sup>2</sup>
Plot	412 m <sup>2</sup>
Foot print	244 m <sup>2</sup>
Garden	93 m <sup>2</sup>
Floor area	246 m <sup>2</sup>
Terrace	33 m <sup>2</sup>
Parking	Double garage.
Garage	Yes
Cellar	-
PENB	G
Reference number	9202
Available from	Immediately

**Terraced house available for rent. Partially furnished 4-bedroom 2-bathroom semidetached house offering spacious terraces and a garden with outstanding views in an exclusive location on the top of a rocky hill opposite the Průhonický Castle. Situated in the popular Průhonice area just about a 15 km drive from the center of Prague.**

The ground floor features an open space living area with direct access to the terrace and garden providing an unobstructed panoramic view of the Castle. There is a fully fitted kitchen with a serving window, two bedrooms with garden access, a large walk-through clothes closet leading into a large bathroom with tub, bidet and toilet, a small walk-in closet, utility room, toilet, and entry hall. The upper floor includes one bedroom with a study area and a balcony, guest bedroom, bathroom with tub, toilet, and a spacious terrace. There is storage in the garden and at the entrance to the house.

Parquet and tile floors, built-in wardrobes and storage, blinds, Miele kitchen appliances, washer, dryer, video entry phone, satellite TV connection. Double garage. Utilities approx. CZK 13,000 per month.

