



Apartment Four-bedroom (5+1)

Rented

185 m², Prague 2, Vinohrady, Na Švihance





Apartment Four-bedroom (5+1)

Rented

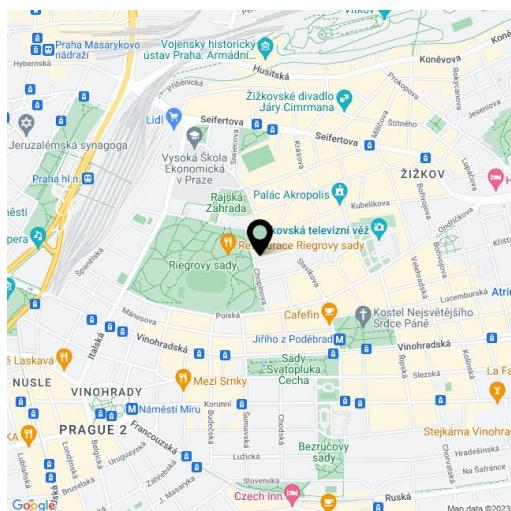
185 m², Prague 2, Vinohrady, Na Švihance

Total area	202 m ²
Floor area*	185 m ²
Terrace	17 m ²
Parking	Two garage parking spaces.
Garage	Yes
Cellar	-
Service price	Monthly deposit for common building charges and utilities CZK 12,500.
PENB	G
Reference number	9232
Available from	Immediately

Benefiting from a roof terrace providing panoramic views of Prague and a wonderful location next to a large park, this reconstructed split-level apartments is on the 5th floor of a tastefully restored Art Deco building (1910) with a new elevator and a beautiful landscaped courtyard garden. Located moments from Riegrovy Sady Park and just a short walk from Jiřího z Poděbrad Square with a metro station, rich amenities, and a very popular regular produce market.

The apartment has a fully fitted and equipped kitchen, a 40 sq. m. living room, a separate dining room, four bedrooms (one with a balcony), three bathrooms, a storage room, a laundry room with a washer and dryer, and an entry hall.

Other features include hardwood parquet and marble floors, granite counters in the bathrooms and kitchen, a security entry door, French windows, a gas boiler, a cable and satellite TV connection, and an alarm. One garage parking space included in the price, a second available at CZK 5,000/month. Possible to furnish at a higher rent.



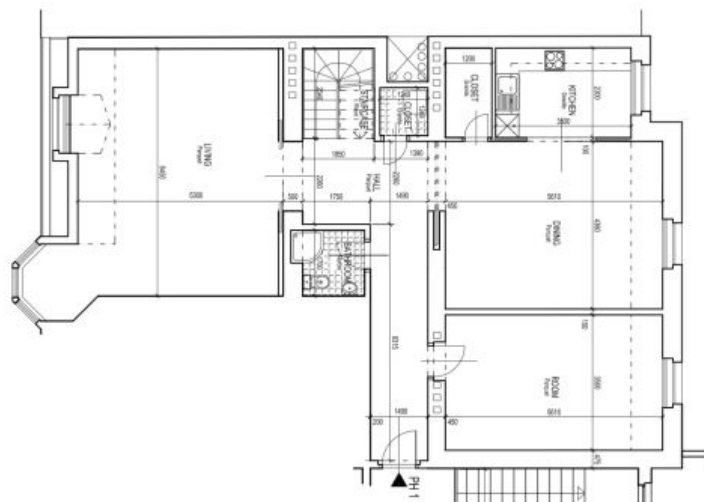
* Area of the unit according to the Civil Code. The area consists of the sum total area of the entire unit bounded by perimeter walls.



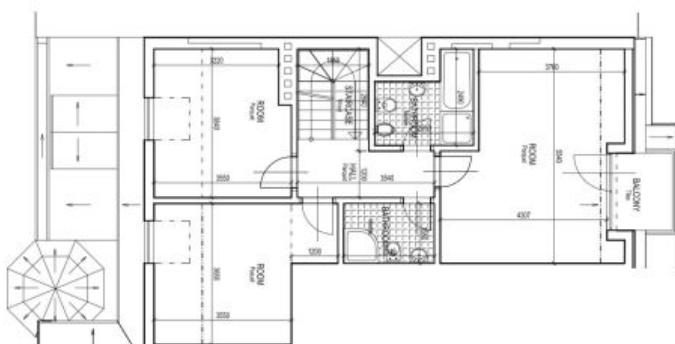
Apartment Four-bedroom (5+1)

185 m², Prague 2, Vinohrady, Na Švihance

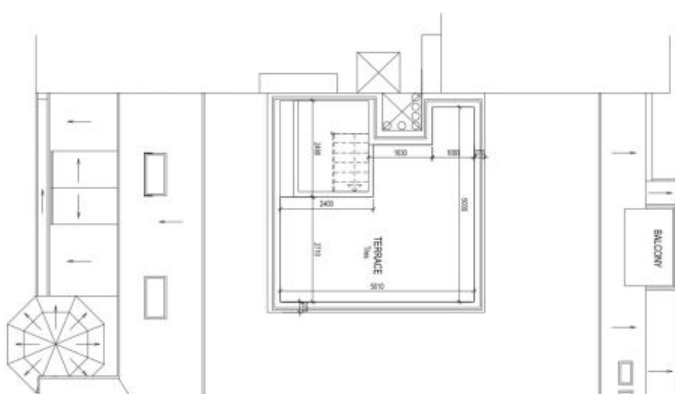
Rented



FIFTH FLOOR



SIXTH FLOOR



ROOF

APARTMENT PH 1
1:100