



Apartment Three-bedroom (4+kk)

Rented

151 m², Prague 2, Vinohrady, Na Švihance





Apartment Three-bedroom (4+kk)

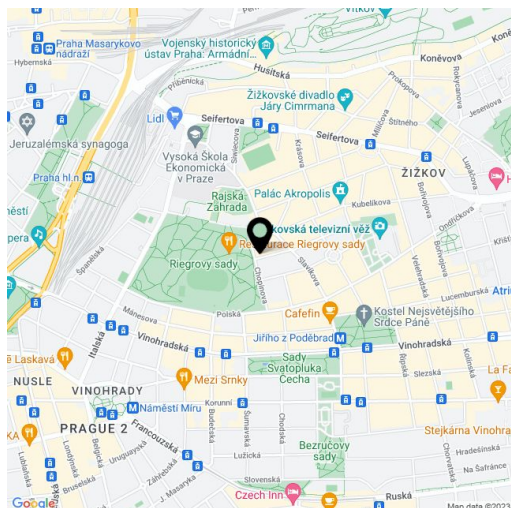
Rented151 m², Prague 2, Vinohrady, Na Švihance

Total area	160 m ²
Floor area*	151 m ²
Terrace	9 m ²
Parking	On-site garage parking at CZK 4000/month + VAT.
Garage	Yes
Cellar	-
PENB	G
Reference number	9244
Available from	Immediately

Reconstructed furnished 3-bedroom 2-bathroom split-level penthouse with a terrace, on the fourth floor in a tastefully restored Art Deco building with a new lift. Located moments from the Riegrovy sady park, just a 5 minute walk to metro, tram and bus.

The apartment has a fully fitted and equipped kitchen open to the living / dining room, three bedrooms and a gallery that can be used as a study, 2 full bathrooms with separate shower and bathtub - one with separate toilet, large walk-in closet in master bedroom, and a laundry room with washer and dryer.

Further features include wooden parquet and marble floors, granite counters in bathrooms and kitchen, and a beautiful glass staircase. Amenities include cable and satellite TV connection, alarm. Can be rented unfurnished for lower rent. On-site garage parking at CZK 4000/month + VAT. Common building charges and utilities CZK 7000/month.



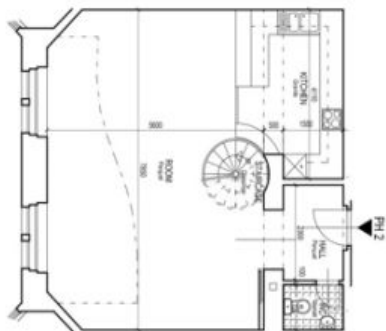
* Area of the unit according to the Civil Code. The area consists of the sum total area of the entire unit bounded by perimeter walls.



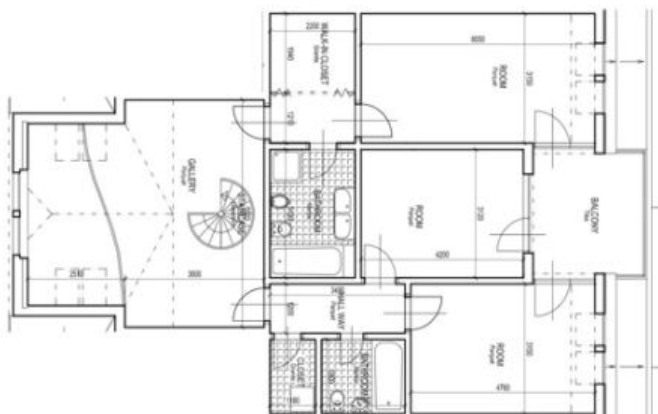
Apartment Three-bedroom (4+kk)

Rented

151 m², Prague 2, Vinohrady, Na Švihance



FIFTH FLOOR



SIXTH FLOOR

APARTMENT PH 2
1:100