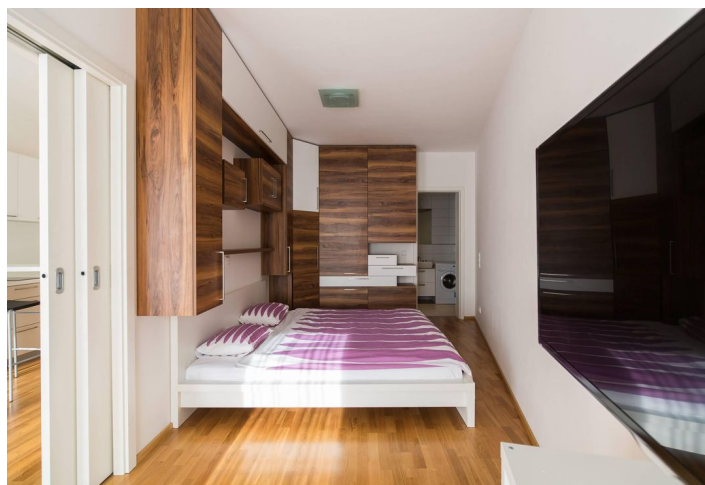




Apartment One-bedroom (2+kk)

Rented

45 m², Prague 4, Michle, Baarova





Apartment One-bedroom (2+kk)

Rented45 m², Prague 4, Michle, Baarova

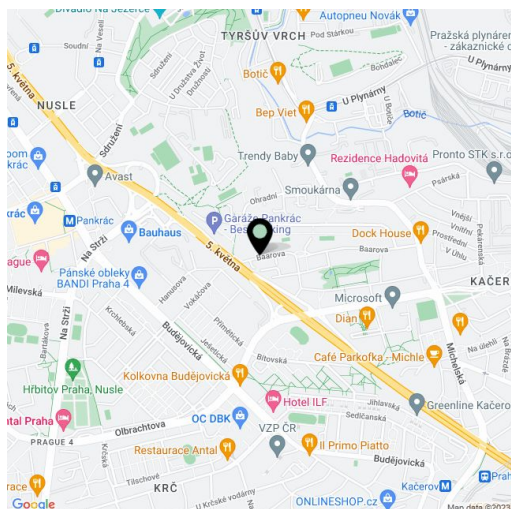
| | |
|------------------|--------------------------|
| Total area | 49 m ² |
| Floor area* | 45 m ² |
| Balcony | 4 m ² |
| Parking | Garage parking available |
| Garage | Yes |
| Cellar | Yes |
| PENB | G |
| Reference number | 9249 |
| Available from | Immediately |

Furnished 1-bedroom modern flat with a 4 m² balcony situated on the 2nd floor of a new residential development with 24-hour reception, a lift, security, park, children's playground and underground parking. Location with a full range of amenities, near the BB Centrum and Brumlovka multipurpose centers, with bus connections to Budějovická and Pankrác metro stations and quick access to the city center.

The interior includes a living room with a fully fitted open kitchen and balcony facing the park, one bedroom, en-suite bathroom (bathtub, sink, toilet), guest toilet, and entry hall with built-in wardrobes.

Wooden floors, built-in storage, security entry door, French windows, washer, dishwasher, TV, audio entry phone. Cellar, chip entry to the building. One parking space included. Common building charges CZK 3,000/month including electricity.

Interior 45 m², balcony 4 m².



* Area of the unit according to the Civil Code. The area consists of the sum total area of the entire unit bounded by perimeter walls.