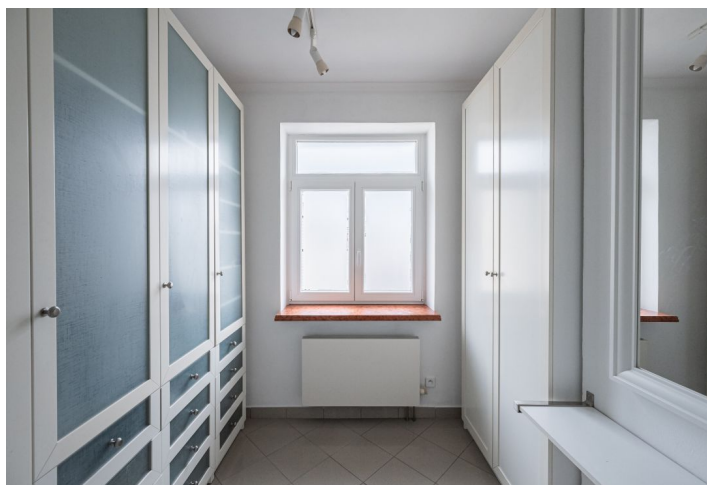




Apartment Four-bedroom (5+1)

Rented

248 m², Prague 2, Nové Město, Dřevná





Apartment Four-bedroom (5+1)

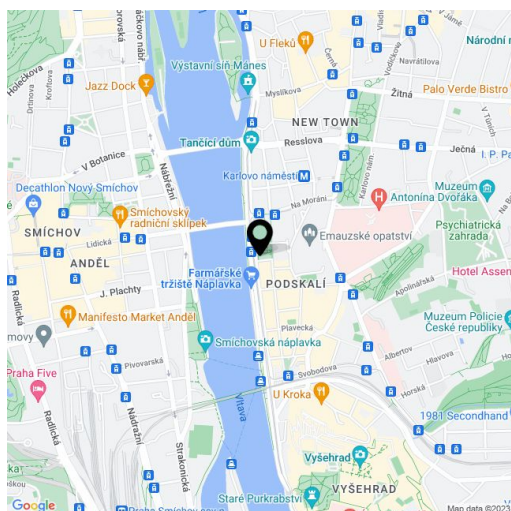
Rented248 m², Prague 2, Nové Město, Dřevná

Total area	260 m ²
Floor area*	248 m ²
Terrace	12 m ²
Parking	Garage parking included.
Garage	Yes
Cellar	-
Service price	Deposit for common building charges and utilities CZK 10,000/month.
PENB	G
Reference number	9445
Available from	Immediately

Boasting wonderful unobstructed views of the Vltava River, Prague Castle, Emauzy Church, and Vyšehrad Castle, this attractive furnished split-level attic apartment with a 12 sq. m. terrace is situated on the top sixth floor of a fully renovated Art Nouveau building with an elevator and well-maintained common areas. Located mere steps from the Karlovo (Palackého) náměstí metro station and tram stop, minutes to the city center, with full amenities within easy reach and convenient to the French School.

The interior features a 74 sq. m. double height living room with a dining area and beautiful views, a fully fitted kitchen (can be separated by a sliding glass partition), four bedrooms facing a quiet courtyard, three bathrooms (two of them en-suite), a large gallery with access to a winter garden and terrace, two large walk-in closets, a utility room, a guest toilet, and an entry hall.

Hardwood parquet floors, tiles, security entry door, built-in wardrobes, air-conditioning unit, washer, dryer, dishwasher, satellite connection, alarm. Garage parking space included.



* Size of the unit according to the Housing Act.
The area consists of the sum total of the internal area of every room.

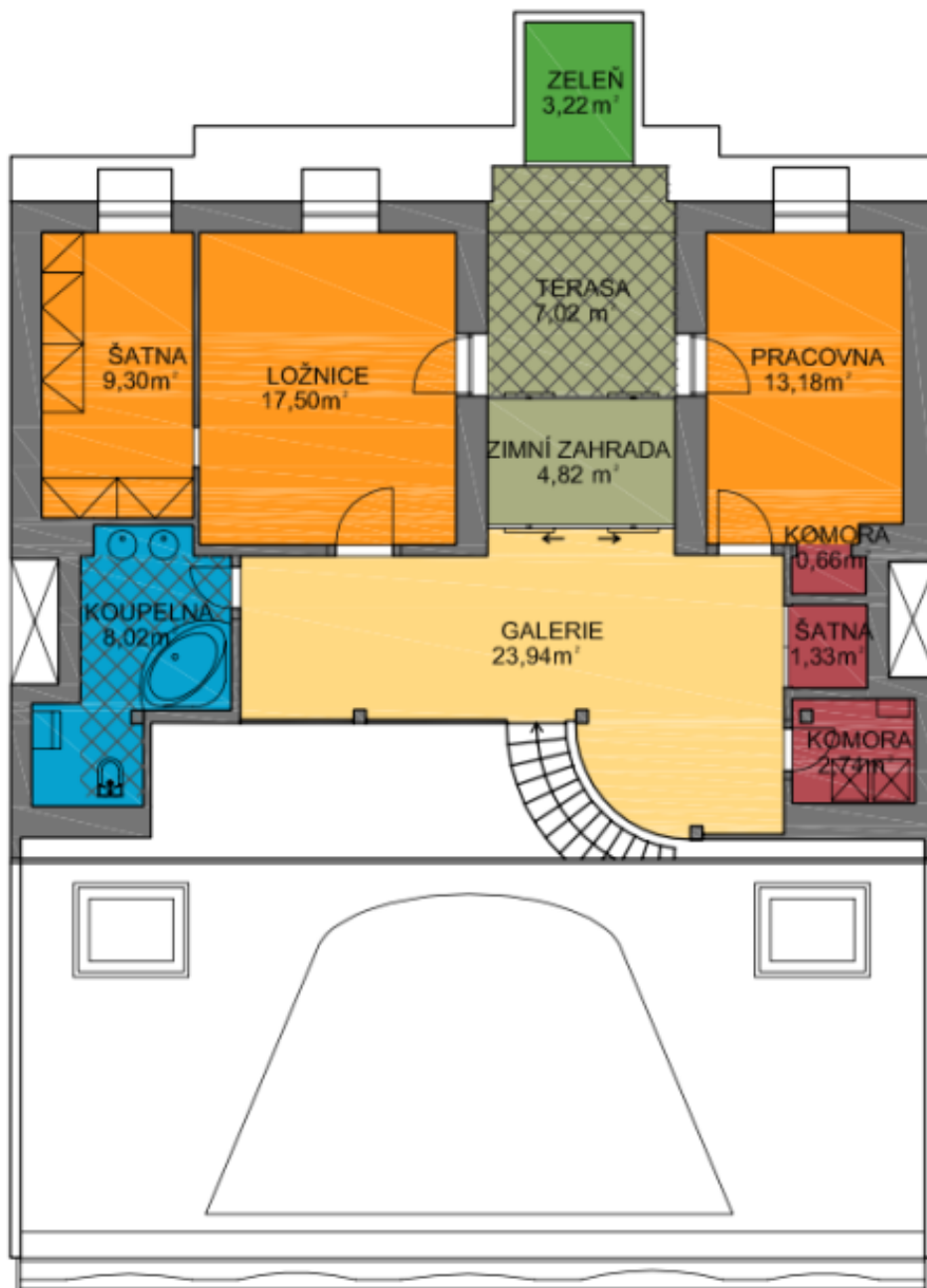


Apartment Four-bedroom (5+1)

248 m², Prague 2, Nové Město, Dřevná

Rented

7.PATRO





Apartment Four-bedroom (5+1)

248 m², Prague 2, Nové Město, Dřevná

Rented

6.PATRO

