



## Apartment Three-bedroom (4+kk)

Rented

100 m<sup>2</sup>, Prague 1, Nové Město, Nekázanka





## Apartment Three-bedroom (4+kk)

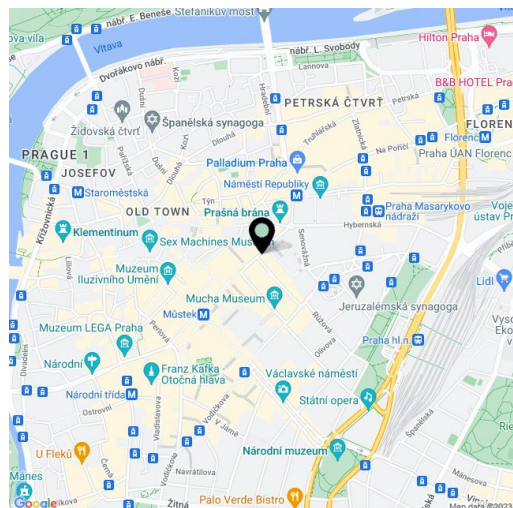
**Rented**100 m<sup>2</sup>, Prague 1, Nové Město, Nekázanka

Total area	115 m <sup>2</sup>
Floor area*	100 m <sup>2</sup>
Terrace	15 m <sup>2</sup>
Parking	-
Cellar	-
PENB	G
Reference number	9450
Available from	Immediately

Boasting a roof terrace providing far reaching views incl. the Prague Castle, this completely modernized furnished multi-level 3-bedroom 2-bathroom flat is situated on the fifth to eighth floor of a renovated historic building with a lift. Conveniently located right in the city center, just a few minute walk from Wenceslas Square and metro stations Můstek (lines A and B) and Náměstí Republiky (line B), with full amenities in the area.

Ground floor: entry hall with built-in storage, one bedroom. First floor: one bedroom / office, shower bathroom with toilet and bidet shower. Second floor: one bedroom, bathroom with tub and toilet. Third floor: living room with a piano, a fully fitted open kitchen, winter garden / study, terrace access.

Floors: wood, cork, marmoleum, tiles. Metal circular staircase, security entry door, built-in wardrobes in all bedrooms, electric heating, washing machine, dishwasher, microwave oven, audio entry phone. Common building charges and utilities around CZK 5000 per month.



\* Area of the unit according to the Civil Code. The area consists of the sum total area of the entire unit bounded by perimeter walls.

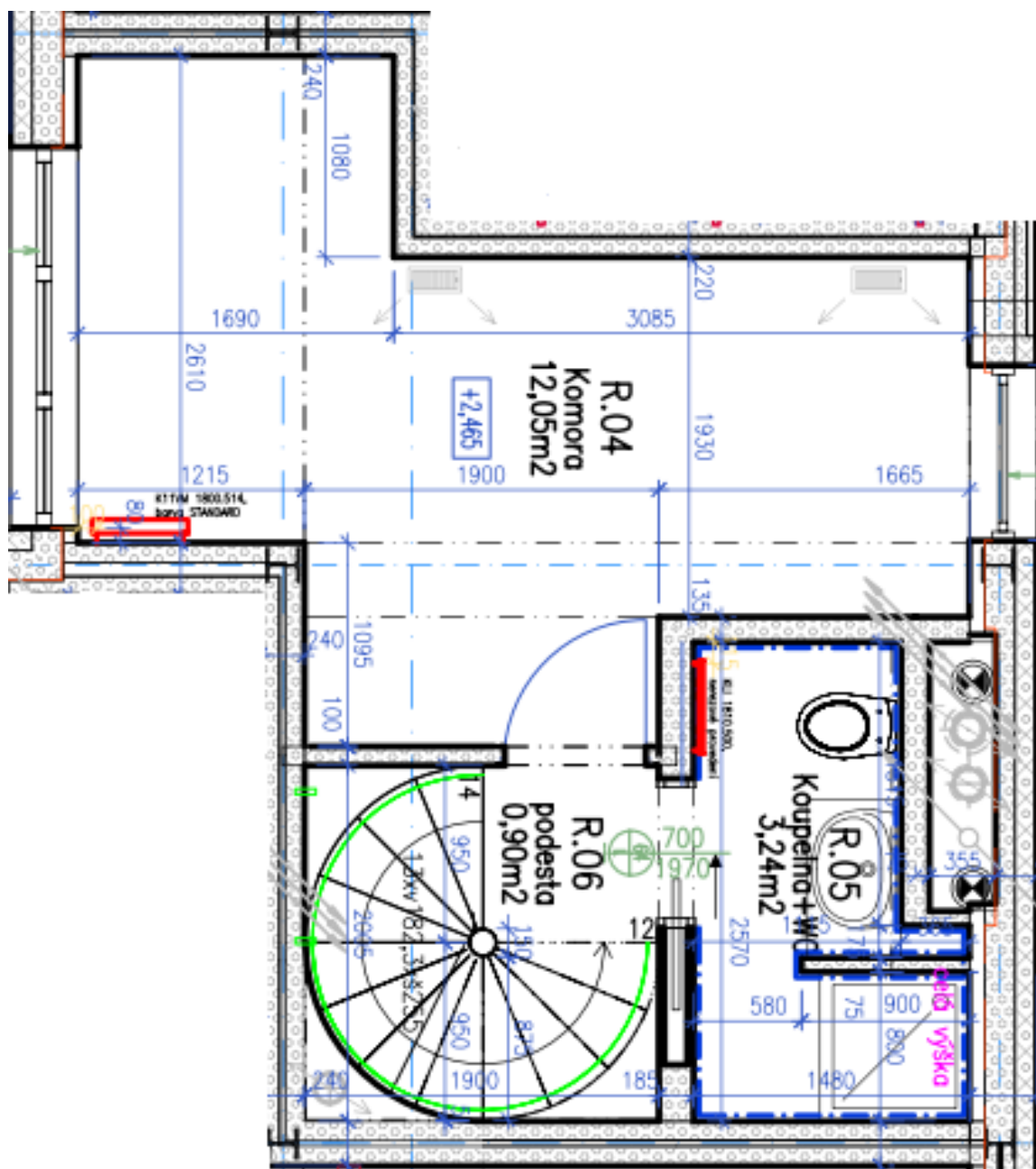




# Apartment Three-bedroom (4+kk)

Rented

100 m<sup>2</sup>, Prague 1, Nové Město, Nekázanka

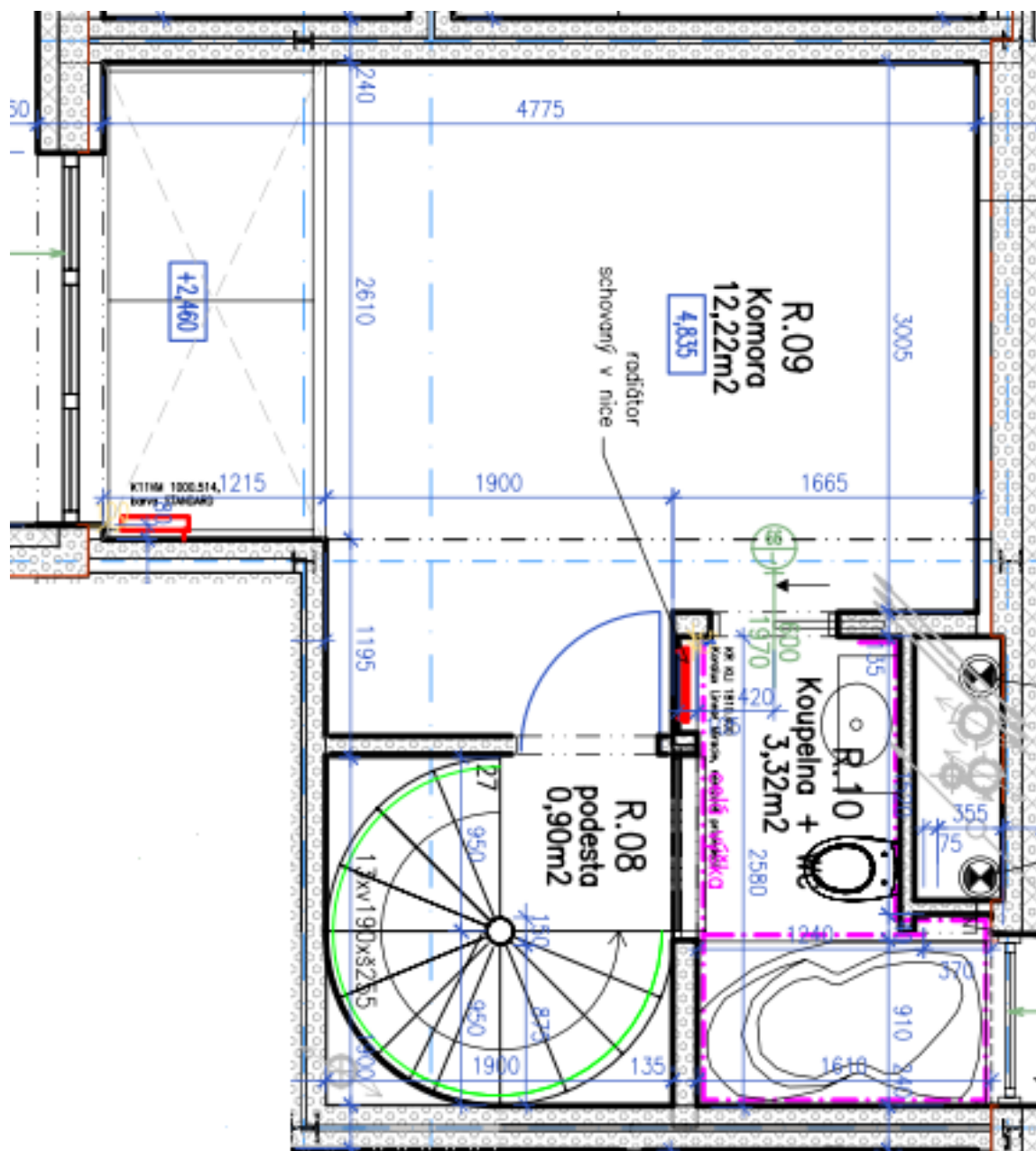




# Apartment Three-bedroom (4+kk)

Rented

100 m<sup>2</sup>, Prague 1, Nové Město, Nekázanka





# Apartment Three-bedroom (4+kk)

Rented

100 m<sup>2</sup>, Prague 1, Nové Město, Nekázanka

