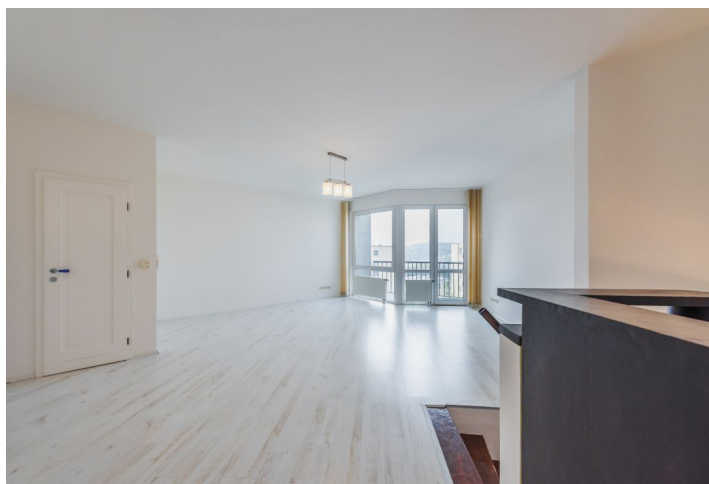




## Apartment Two-bedroom (3+1)

Rented

105 m<sup>2</sup>, Prague 5, Smíchov, Libínská





## Apartment Two-bedroom (3+1)

Rented

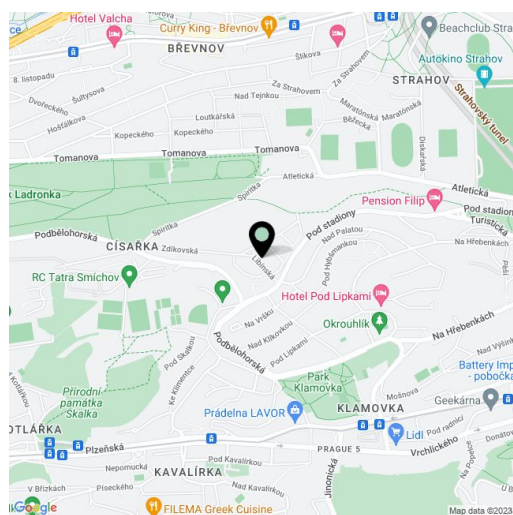
105 m<sup>2</sup>, Prague 5, Smíchov, Libínská

Total area	105 m <sup>2</sup>
Parking	Parking in garage.
Garage	Yes
Cellar	-
PENB	C
Reference number	9509
Available from	Immediately

Unfurnished 2-bedroom split-level flat with a balcony on the 2nd top floor with lift in a row house located in a quiet green Prague 6 residential neighborhood, on the Strahov slopes, and convenient to the French School and Ladronka Park. Easy access to central Prague, buses to metro Anděl/Dejvická.

The lower level includes one bedroom, bathroom with massage bath tub and sink, separate toilet with sink, walk-in closet, and entry hall. The upper level opens into a spacious living room with balcony access, there is one more bedroom, fully fitted kitchen, and a toilet with sink.

Parquet floors, oversized windows, blinds, washer, dishwasher, microwave, Internet. Common building charges and deposit for utilities CZK 4000 per month. Unfurnished despite the photos.



\* Area of the unit according to the Civil Code. The area consists of the sum total area of the entire unit bounded by perimeter walls.