



## House Five-bedroom (6+kk)

Rented

272 m<sup>2</sup>, Prague 6, Střešovice, Sibeliova





## House Five-bedroom (6+kk)

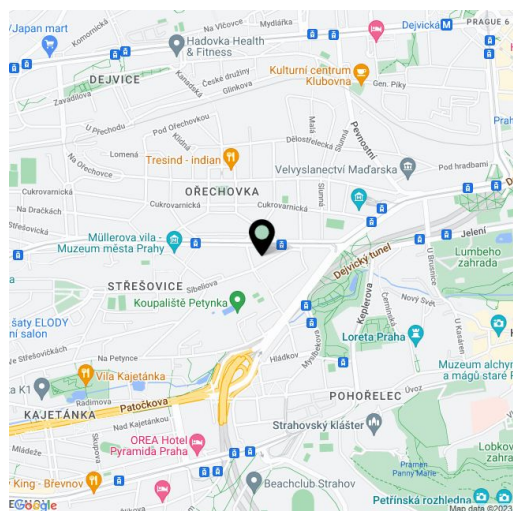
**Rented**272 m<sup>2</sup>, Prague 6, Střešovice, Sibeliova

Plot	795 m <sup>2</sup>
Parking	Parking available.
Garage	Yes
Cellar	Yes
PENB	G
Reference number	9514
Available from	Immediately

**House rental in Prague 6. Located in the prestigious Střešovice neighborhood, this renovated 5-bedroom 3-bathroom semidetached villa with a landscaped garden was built in the 1930s. Quiet residential area in the vicinity of the Prague Castle, convenient to the airport, with easy access to the city center and international schools (ISP, Riverside School, Park Lane, French School) by public transportation and by car, just 300 m from Park Lane International School.**

The ground floor includes a spacious winter garden that can be used as dining room, living room with a fully fitted open kitchen and pantry, shower bathroom and entry hall. The first floor has three bedrooms and bathroom with tub, the attic floor features two more bedrooms and bathroom with tub and walk-in shower. There is a full basement with lots of storage, laundry and walk-in closet.

Parquet and tile floors, built-in wardrobes, security blinds and bars on windows, washing machine, dishwasher, telephone line, alarm connected to a security agency, audio entry phone, garden shed. Double garage plus parking on the plot. Utilities approx. CZK 10,000 per month. Available from August 2016.

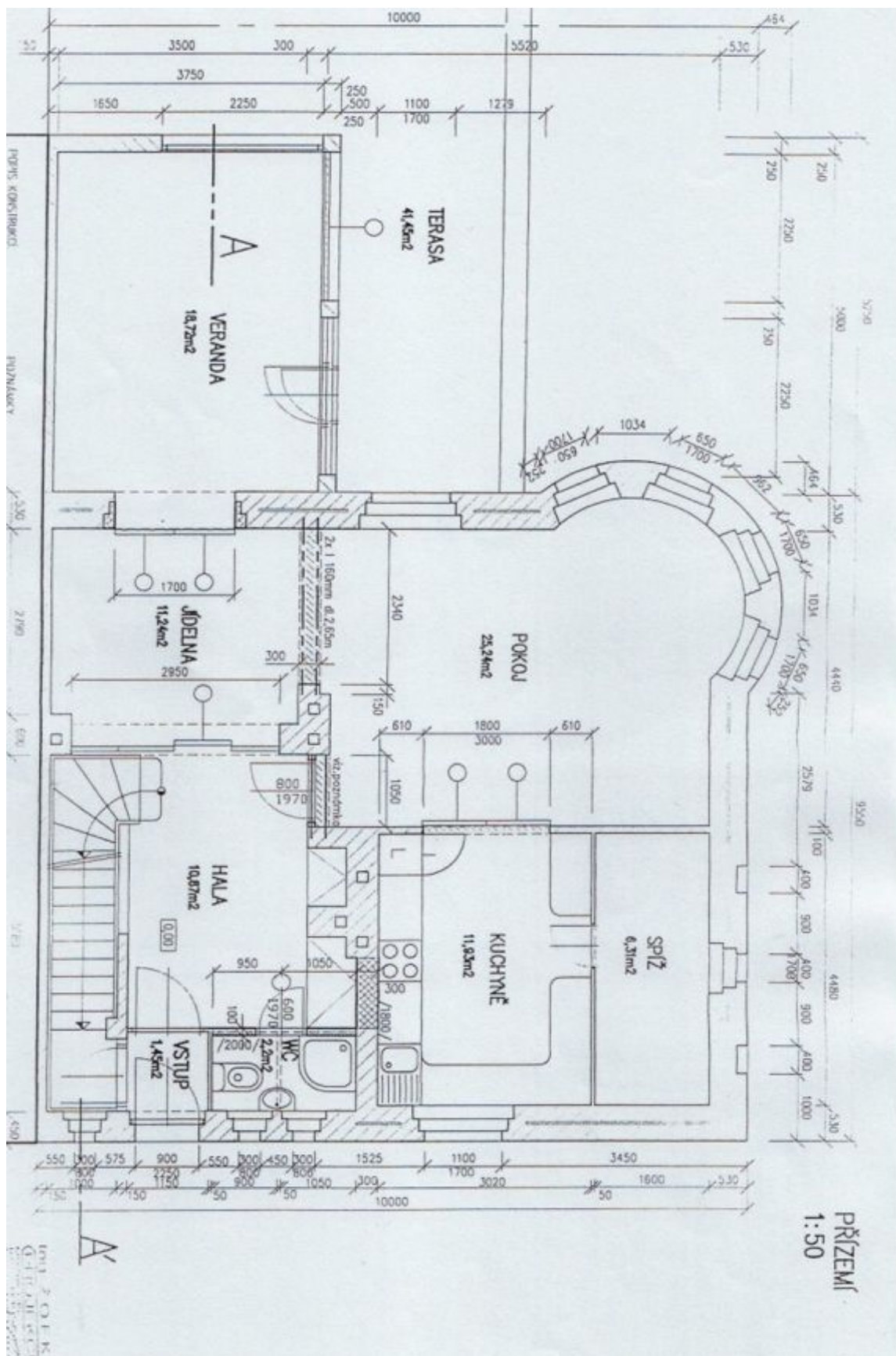




# House Five-bedroom (6+kk)

Rented

272 m<sup>2</sup>, Prague 6, Střešovice, Sibeliova

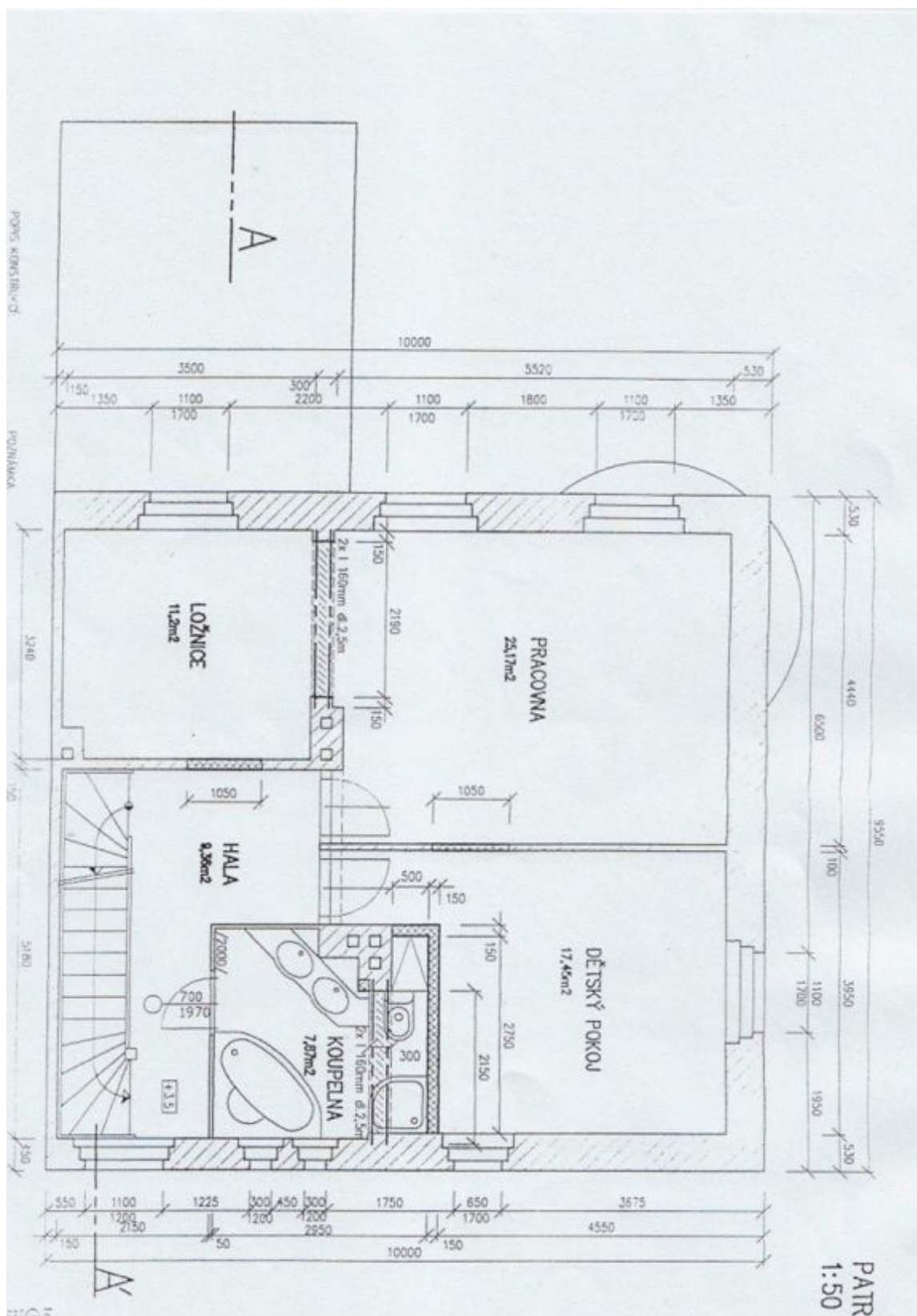




# House Five-bedroom (6+kk)

Rented

272 m<sup>2</sup>, Prague 6, Střešovice, Sibeliova

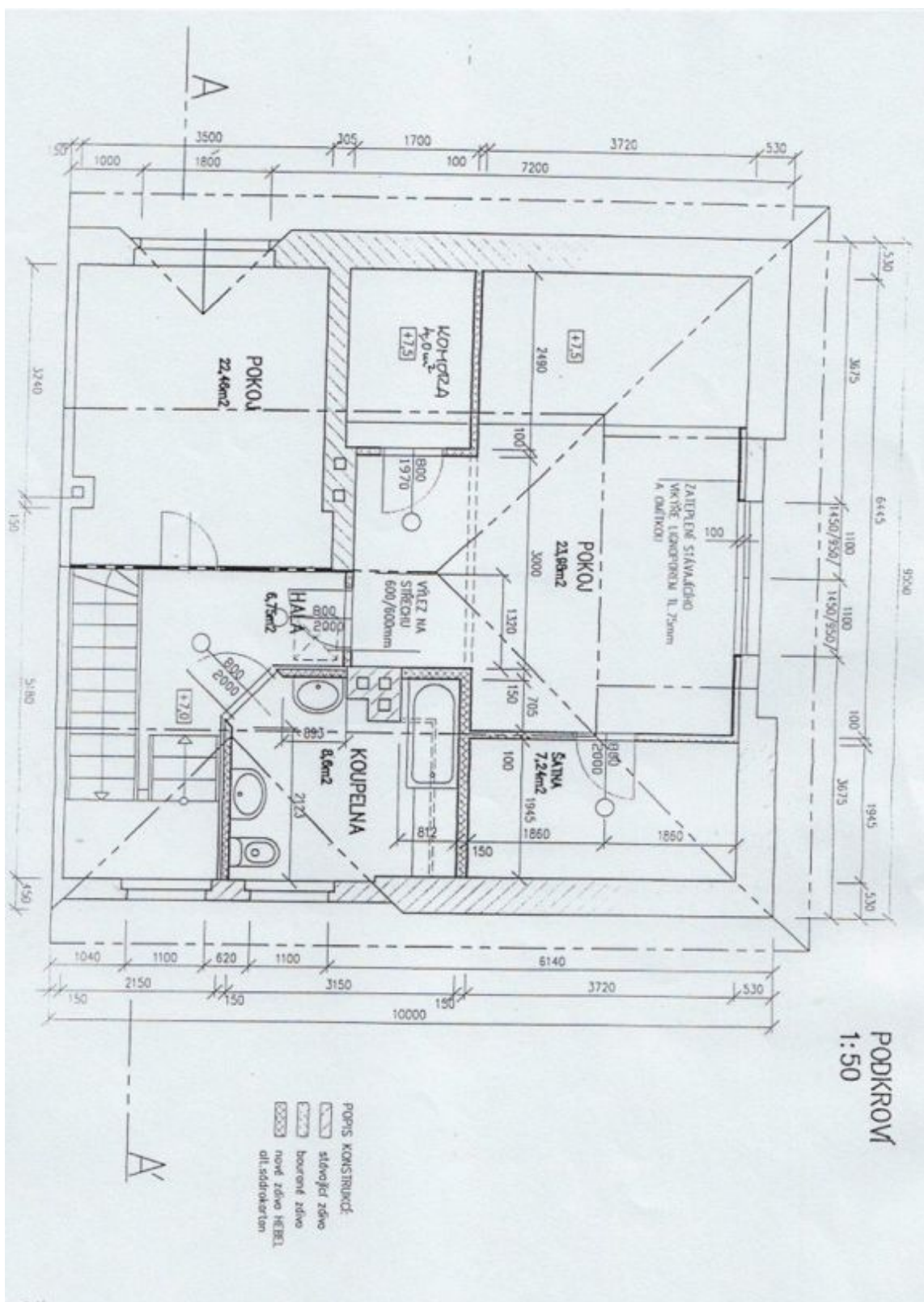




# House Five-bedroom (6+kk)

Rented

272 m<sup>2</sup>, Prague 6, Střešovice, Sibeliova





## House Five-bedroom (6+kk)

272 m<sup>2</sup>, Prague 6, Střešovice, Sibeliova

Rented

