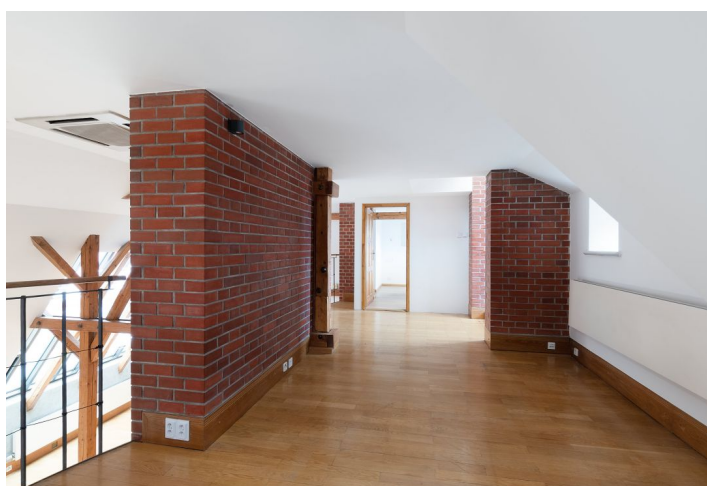
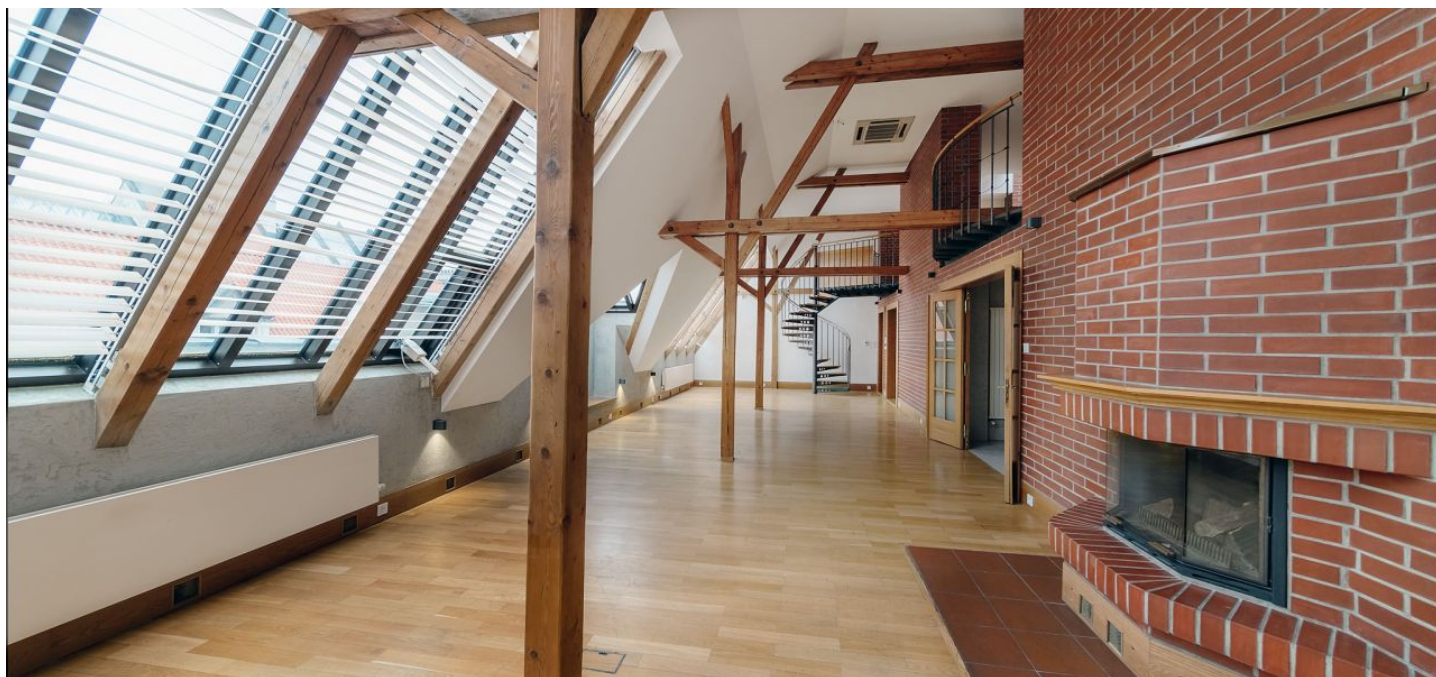




Apartment Three-bedroom (4+1)

Rented

225 m², Praha 1, Staré Město, Břehová





Apartment Three-bedroom (4+1)

Rented

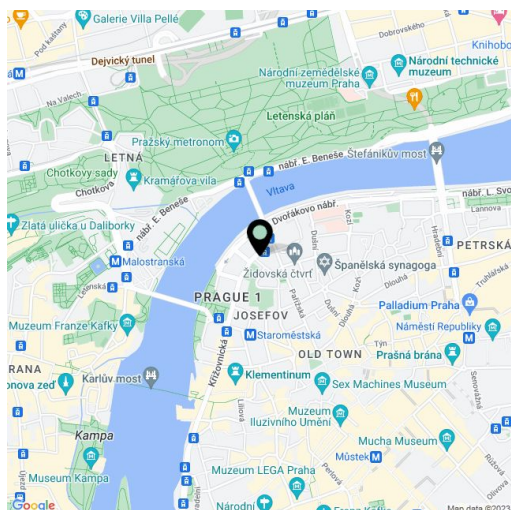
225 m², Praha 1, Staré Město, Břehová

Total area	245 m ²
Floor area*	225 m ²
Terrace	20 m ²
Parking	-
Cellar	-
PENB	G
Reference number	9904
Available from	Immediately

Elegant duplex unfurnished attic 2-bedroom 2-bathroom flat with a large terrace on the 5th floor of a completely renovated Art Nouveau building with a lift in the historical center of Prague - Josefov, close to the Vltava embankment and Old Town Square. Preserved original architectural features combining historical and modern style.

The interior of the apartment consists of a spacious living room with fireplace and a dining area, fully equipped kitchen, gallery, 2 bedrooms, a small study, 2 bathrooms (bathtub, shower, toilet, bidet) and an entrance hall.

Wooden parquet floors, large windows providing a nice view, wooden beams, stylish brick paneling, spacious terrace, built-in wardrobes, washer, dishwasher, blinds. Common building charges CZK 7,800/month. Energy is billed separately.



* Area of the unit according to the Civil Code. The area consists of the sum total area of the entire unit bounded by perimeter walls.