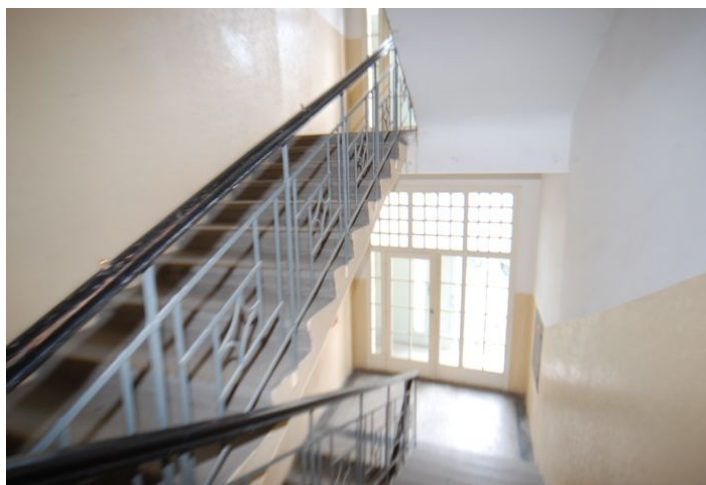




Apartment One-bedroom (2+1)

€ 648 | CZK 16 000

50 m², Prague 6, Dejvice, Bubenečská





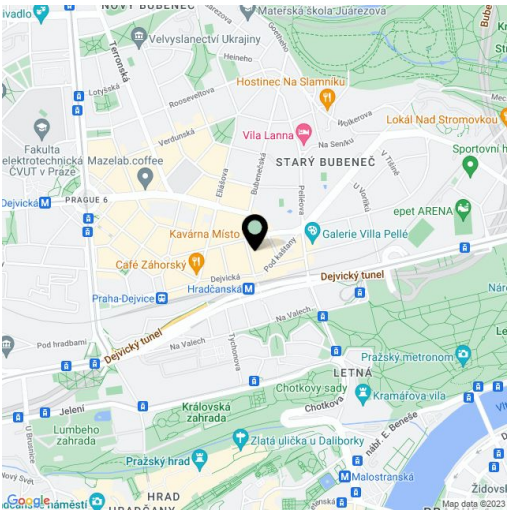
Apartment One-bedroom (2+1)

€ 648 | CZK 16 000

50 m², Prague 6, Dejvice, Bubenečská

Total area	50 m²
Parking	-
Cellar	-
PENB	G
Reference number	9972
Available from	Immediately

Fully furnished 1-bedroom apartment with a tastefully appointed tile bathroom, custom built kitchen including bar and bar stools, good storage space, dishwasher and microwave. The bedroom has a nicely finished loft bed with storage cupboard, and unique view of the Prague Castle, and desk and wardrobe space. The bathroom, entrance foyer, and kitchen have floor heating. The apartment is equipped with satellite or cable TV and Internet connection. Can be rented unfurnished. Rent does not include utilities. 3rd floor with a lift in a building located in the popular Prague 6 neighborhood moments from Hradčanská metro station, and within a short walking distance of the largest park in Prague - Stromovka.



* Area of the unit according to the Civil Code. The area consists of the sum total area of the entire unit bounded by perimeter walls.